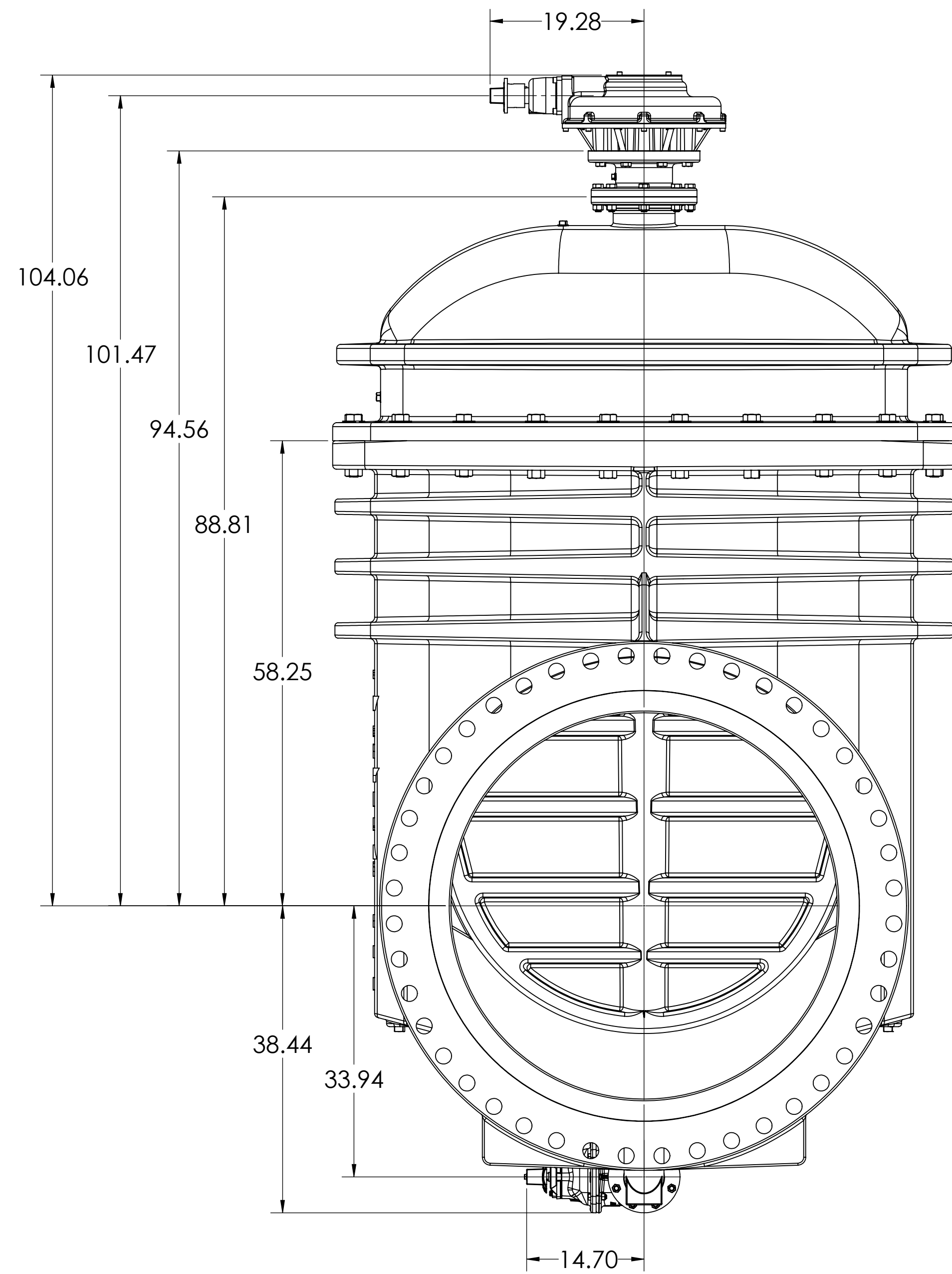
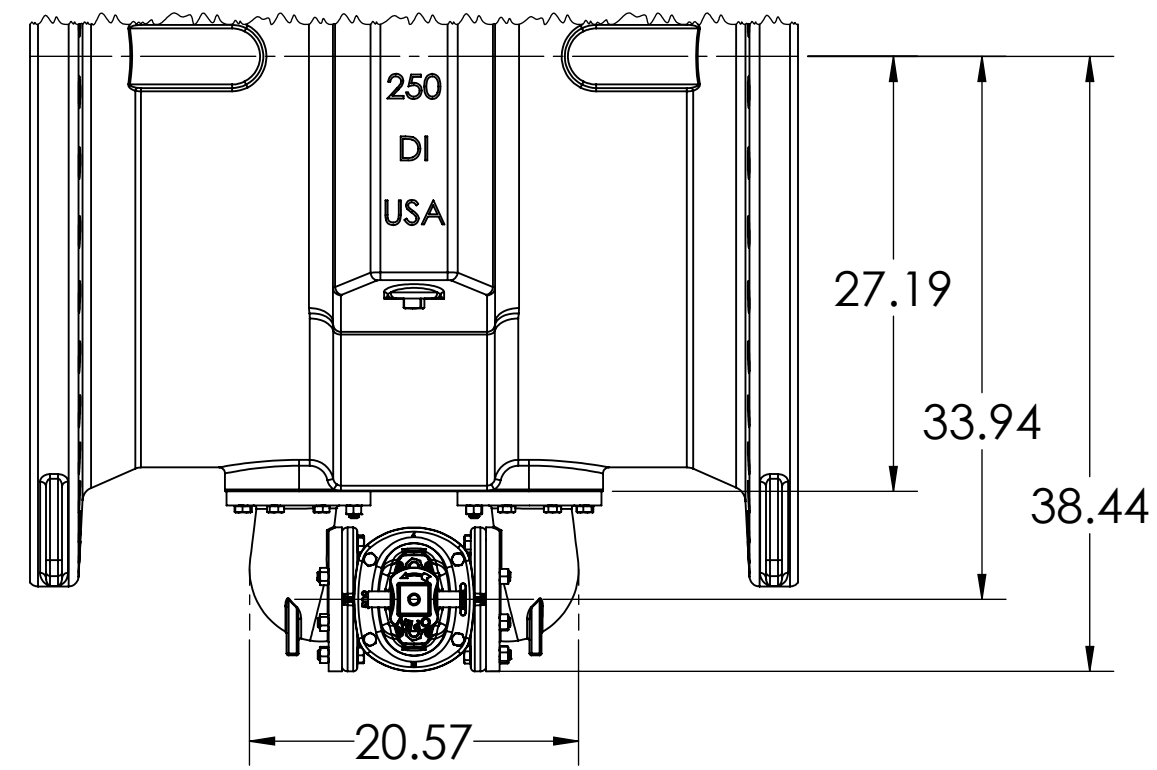


THIRD ANGLE PROJECTION. STANDARDS: ANSI/ASME Y14.100, Y14.101, AND Y14.41. TOLERANCES AS FOLLOWS UNLESS OTHERWISE SPECIFIED.		PROPERTY OF MCWANE CORPORATION. ALL RIGHTS AND DESIGN INFORMATION ARE PROPRIETARY TO MCWANE CORPORATION AND ITS SUBSIDIARIES. REPRODUCTION OR USE WITHOUT PERMISSION OF MCWANE CORPORATION IS PROHIBITED. ALL RIGHTS RESERVED.		DATE: 01/23/23	DRAWN BY: BLS	CHECKED BY: []	SCALE: 1:10	SHEET NO: 6	TOTAL SHEETS: 6	CLW VALVE CO.
MACHINED DIMENSIONS		CASTING DIMENSIONS		MATERIAL		DESCRIPTION		54" NRS RESILIENT WEDGE GATE VALVE		
0.125: ± 0.005		0.125: ± 0.005		LBS.		ESTIMATED WEIGHT				
0.000: ± 0.005		0.000: ± 0.005		1/8"		MIN. RADIUS		1/8"		
ANGLE: ± 0.5°		ANGLE: ± 0.5°		1/8"		MIN. DRAFT		1/8"		
SURFACE FINISH: 125 μin		SURFACE FINISH: 125 μin		1/8"		MIN. DRAFT		1/8"		

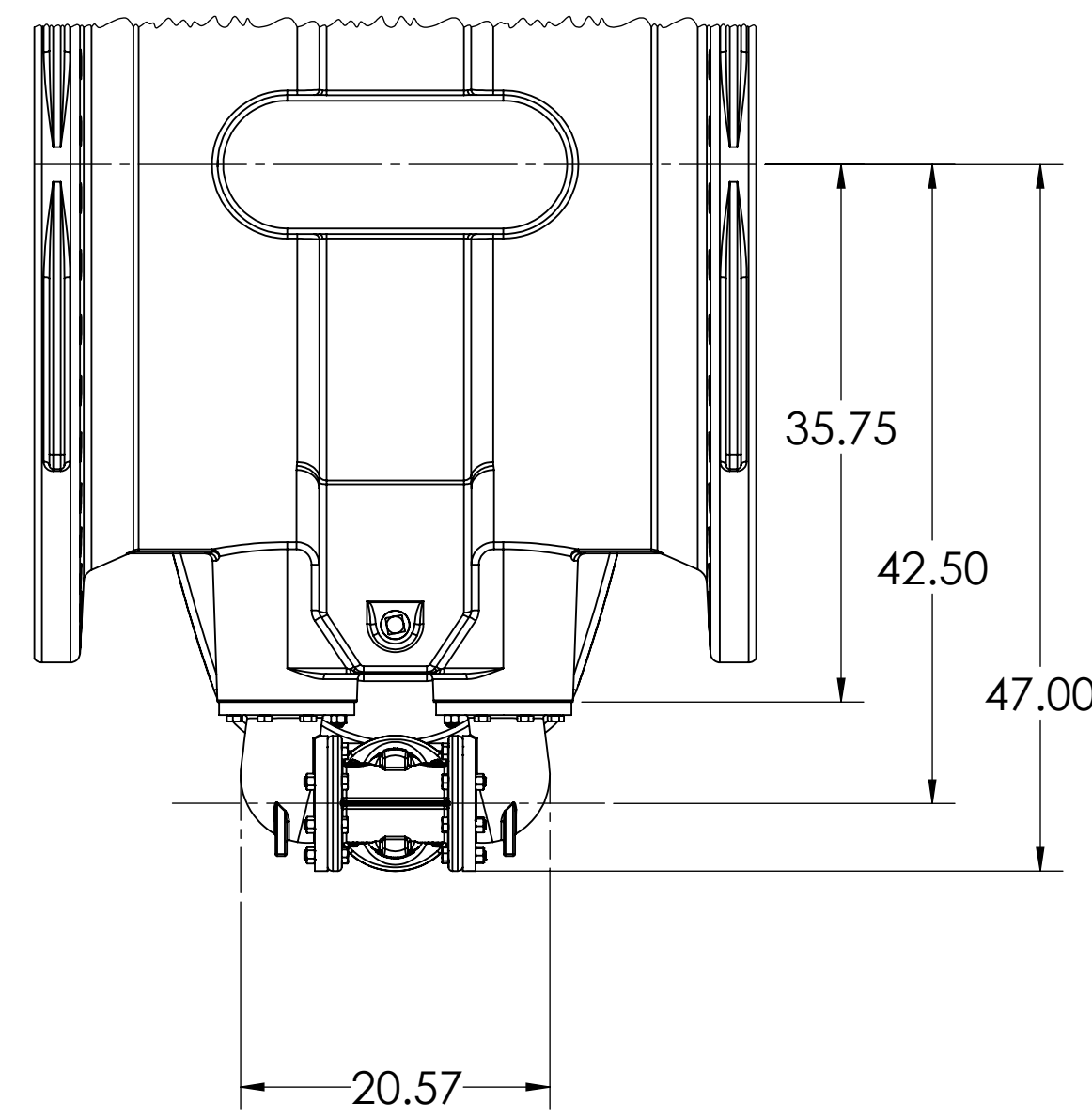
BEVEL GEAR WITH OPTIONAL BOTTOM BYPASS



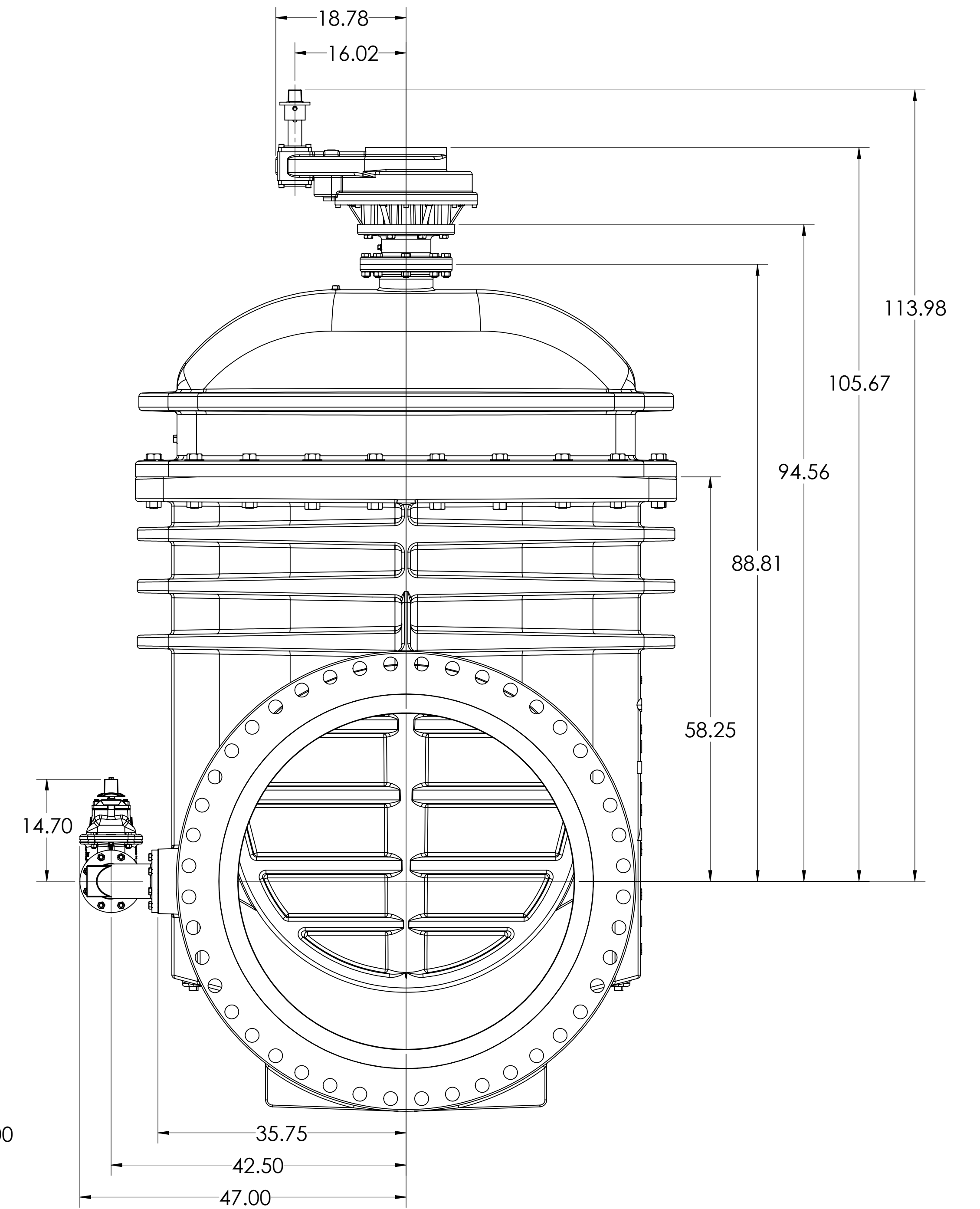
BOTTOM BYPASS



SIDE BYPASS



SPUR GEAR WITH OPTIONAL SIDE BYPASS

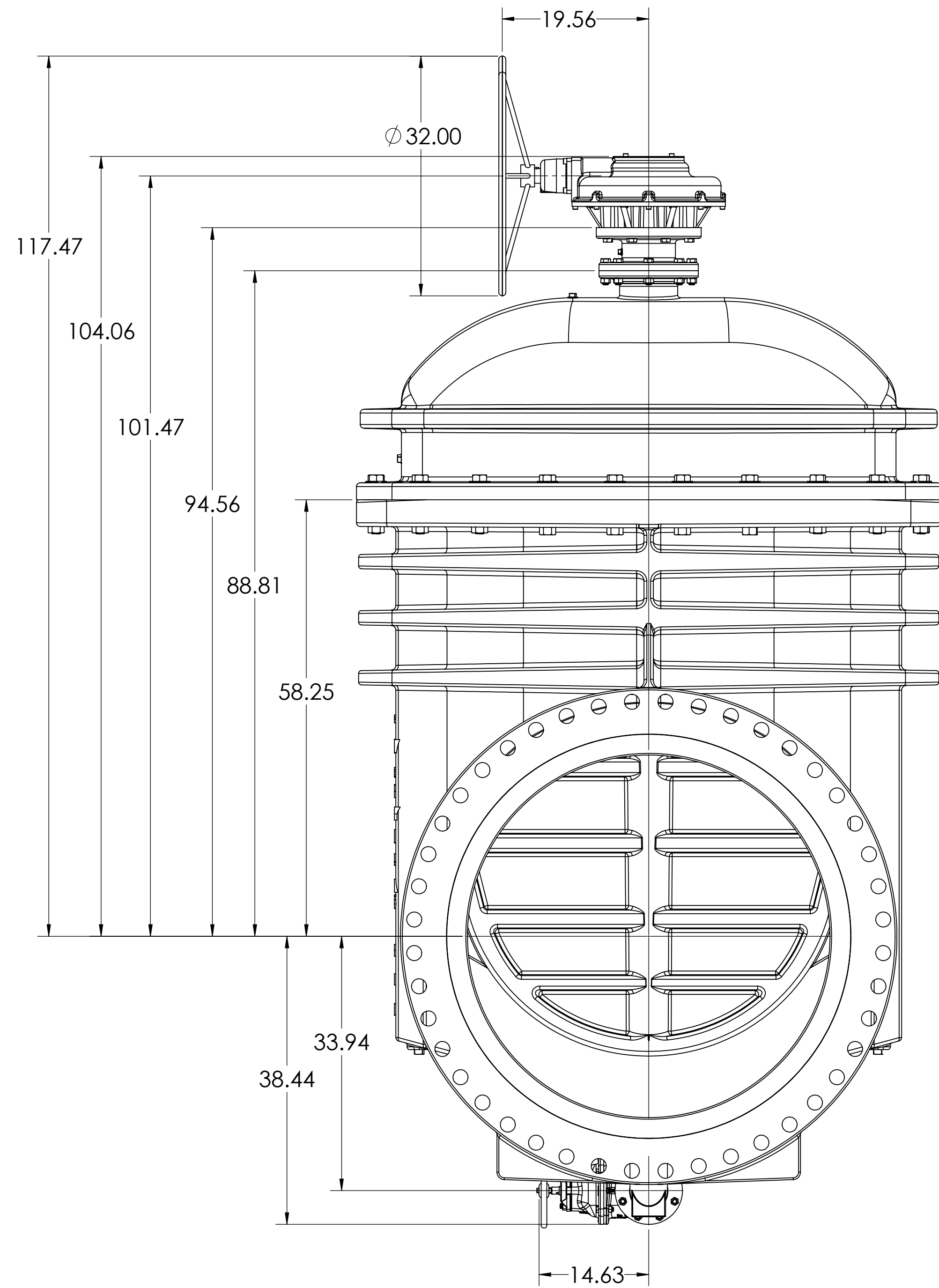


NOTE: GEARS CAN BE ROTATED IN 45° INCREMENTS FOR SPECIAL APPLICATIONS

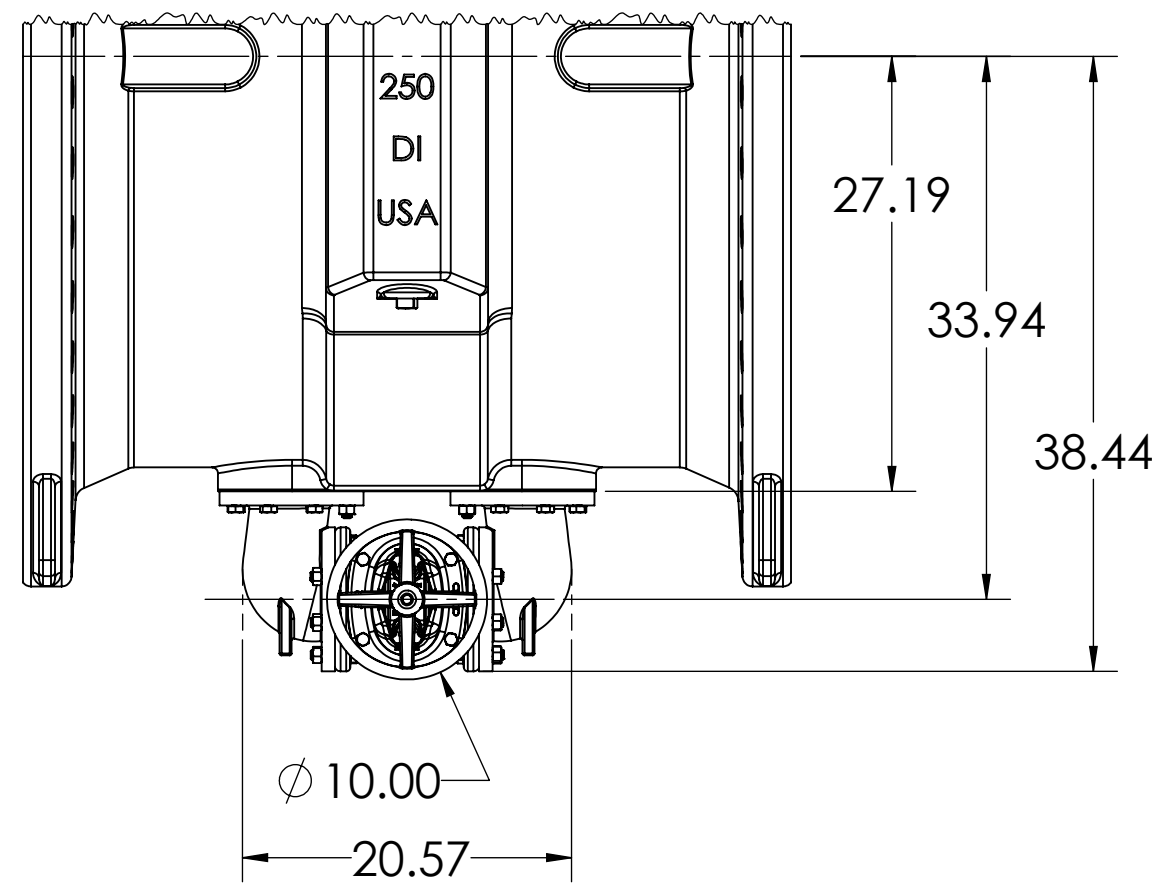
THIRD ANGLE PROJECTION STANDARDS: ANSI/ASME Y14.100, Y14.101, AND Y14.41 TOLERANCES AS FOLLOWS UNLESS OTHERWISE SPECIFIED.		PROPERTY OF MCWANE CORPORATION. ALL DIMENSIONS AND IDENTIFICATION ARE PROPRIETARY TO MCWANE CORPORATION AND ITS SUBSIDIARIES. REPRODUCTION OR USE WITHOUT PERMISSION IS PROHIBITED. OTHERWISE ARRANGED: ALL RIGHTS RESERVED.		REV. NO.	DESCRIPTION
MACHINED DIMENSIONS	CASTING DIMENSIONS	MATERIAL		ESTIMATED WEIGHT	DESCRIPTION
0.125: ±.005	0.125: ±.005	54" NRS RESILIENT WEDGE GATE VALVE		LBS.	
0.000: ±.010	0.125: ±.005				
0.000: ±.005	0.125: ±.005				
ANGLE: ±.2°	MIN. RADIUS: 1/8"				
SURFACE FINISH: 125 μin	MIN. DRAFT: 1/8°				
REV. BY: BLS	DATE: 01/23/23	CHE. BY:	CHE. DATE:	SCALE: 1:12	SHEET NO. 2
					SHEET OF 6

CLW VALVE CO.
2
6

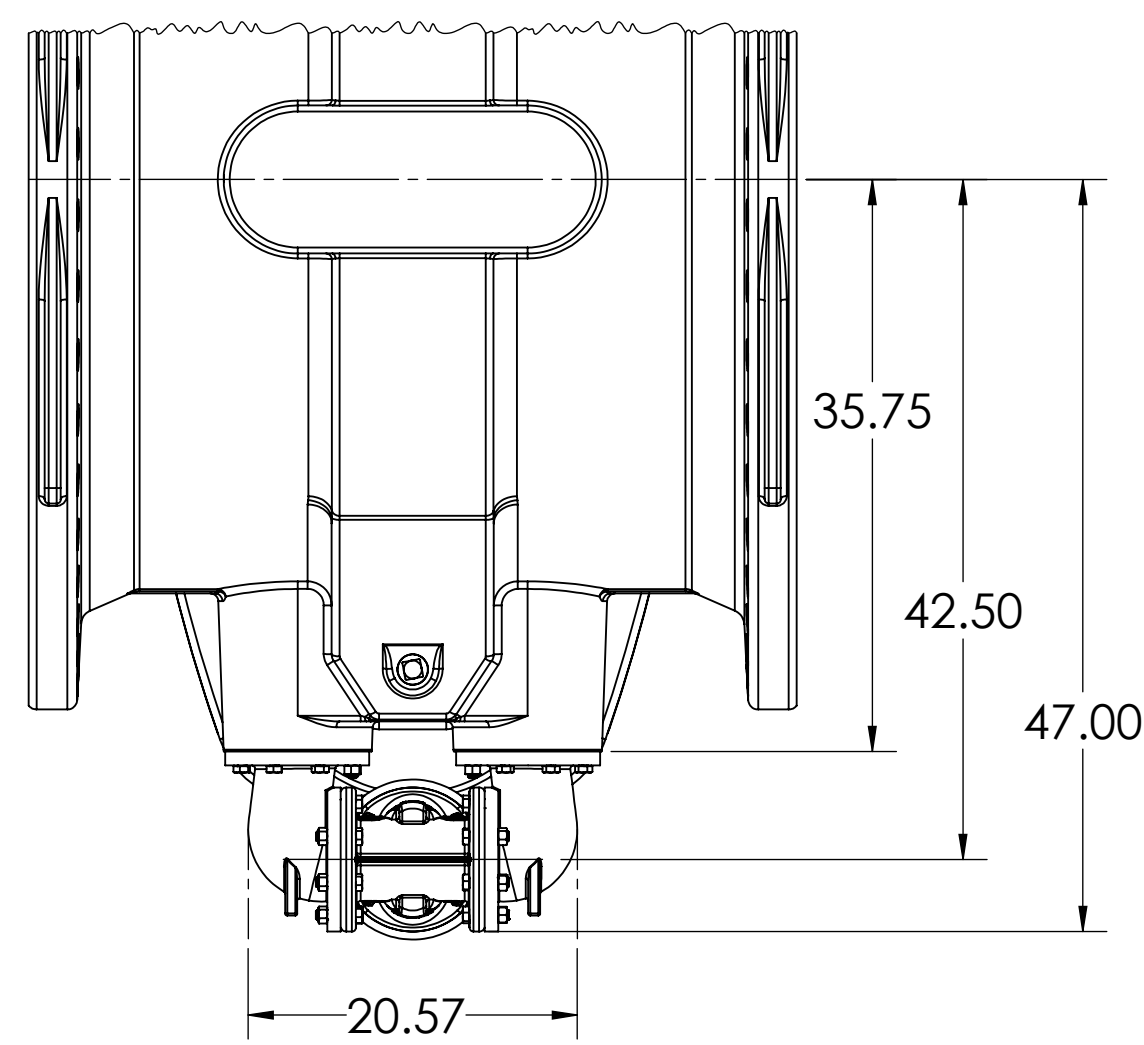
BEVEL GEAR WITH OPTIONAL BOTTOM BYPASS



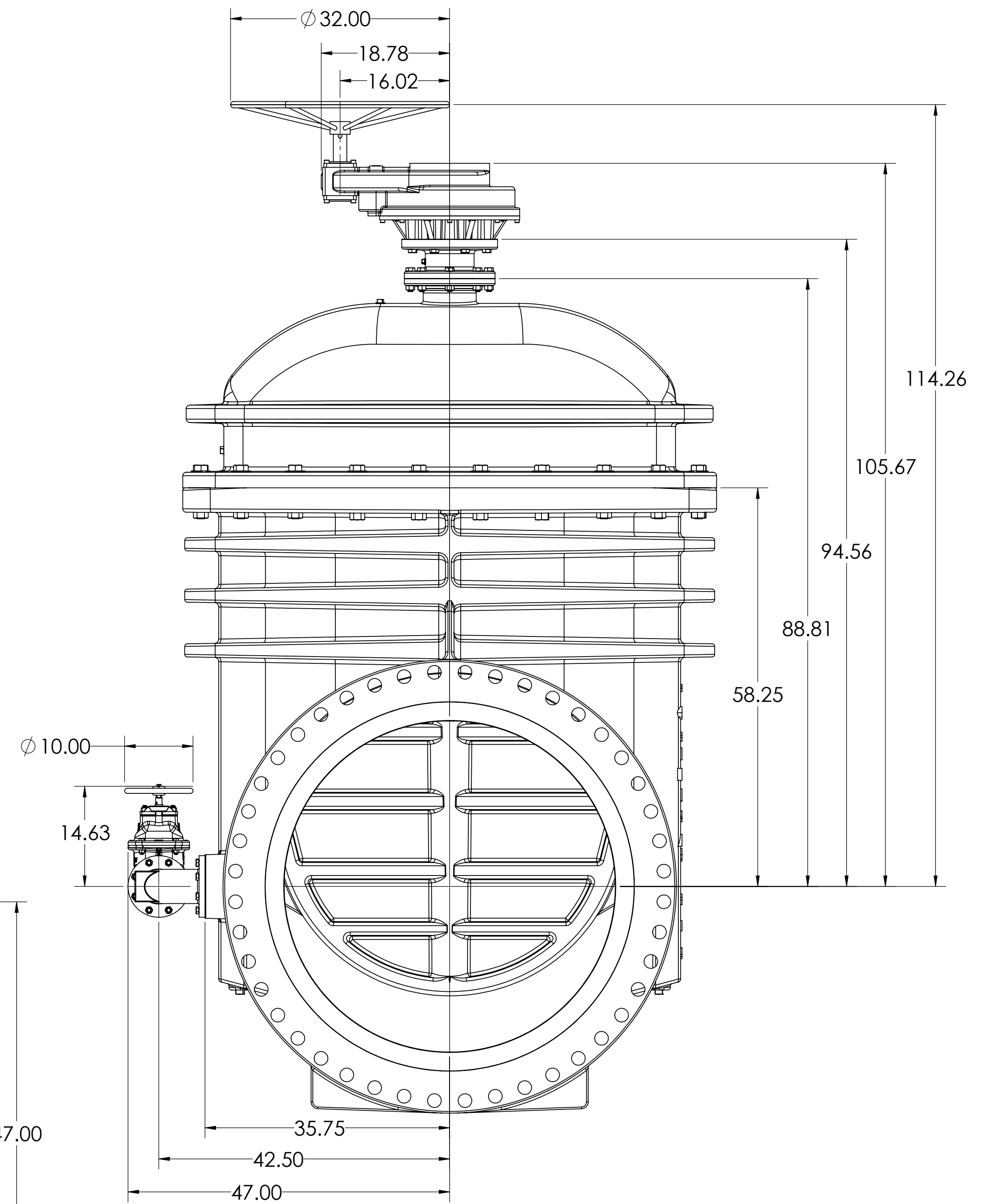
BOTTOM BYPASS



SIDE BYPASS

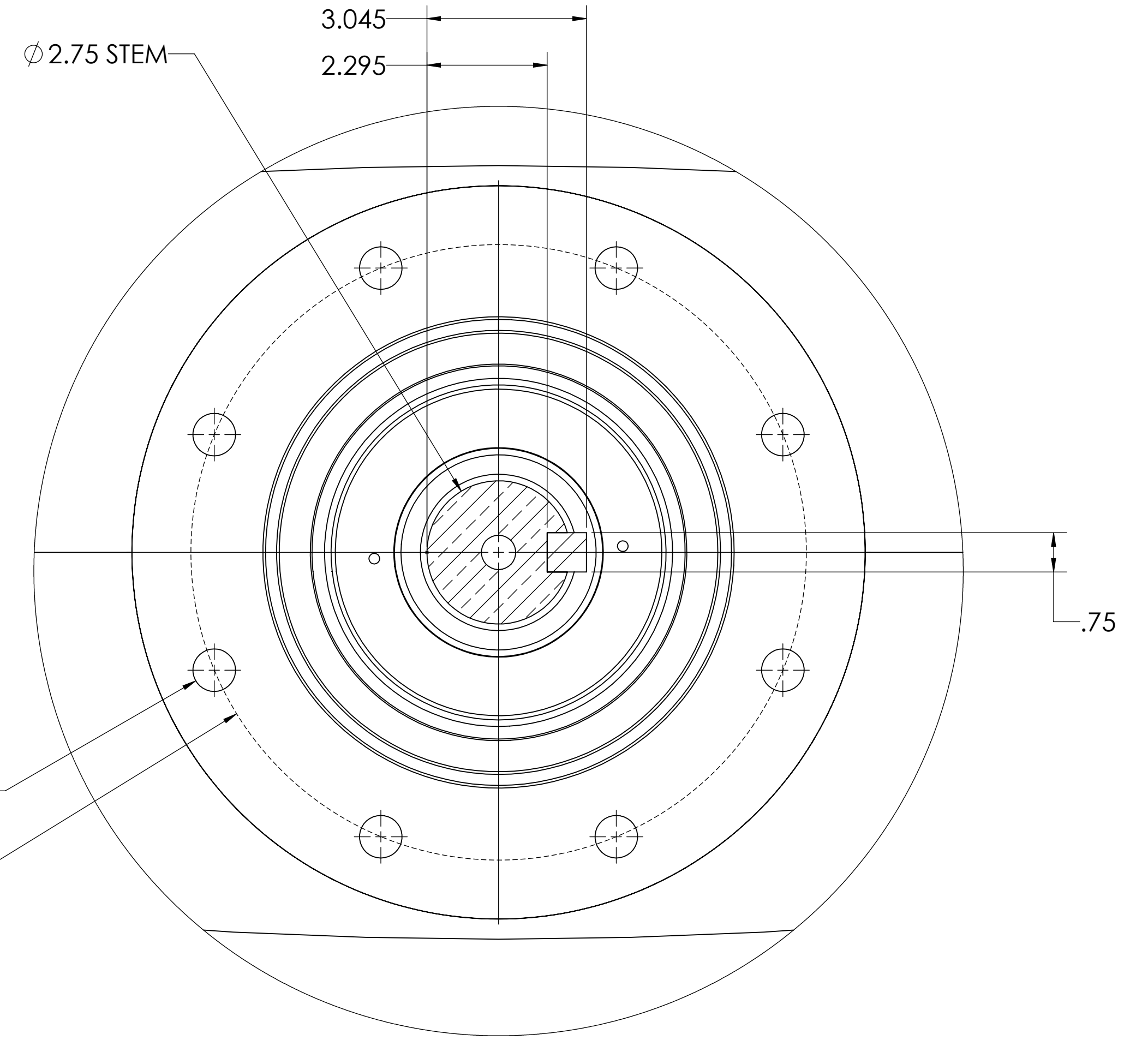
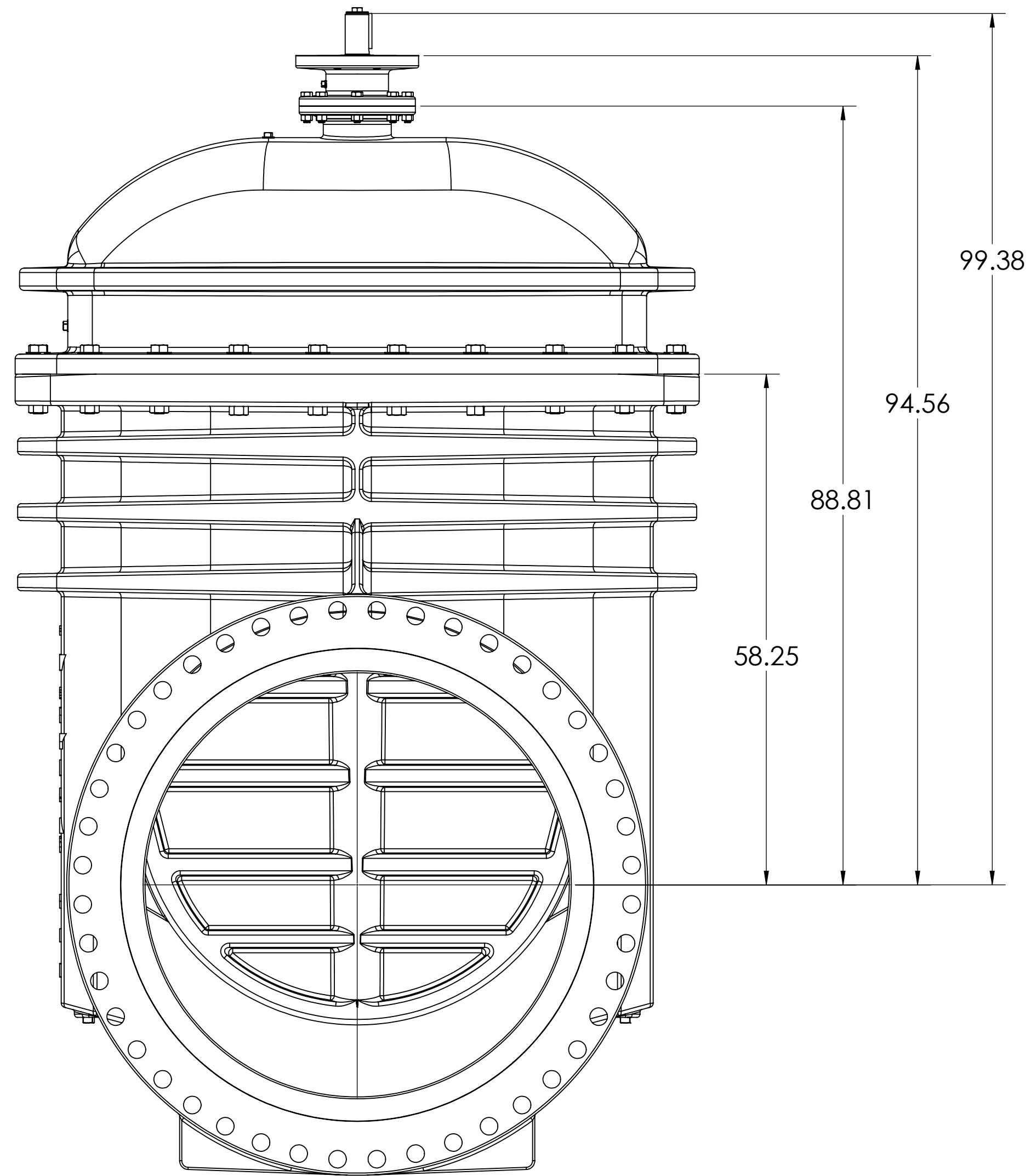
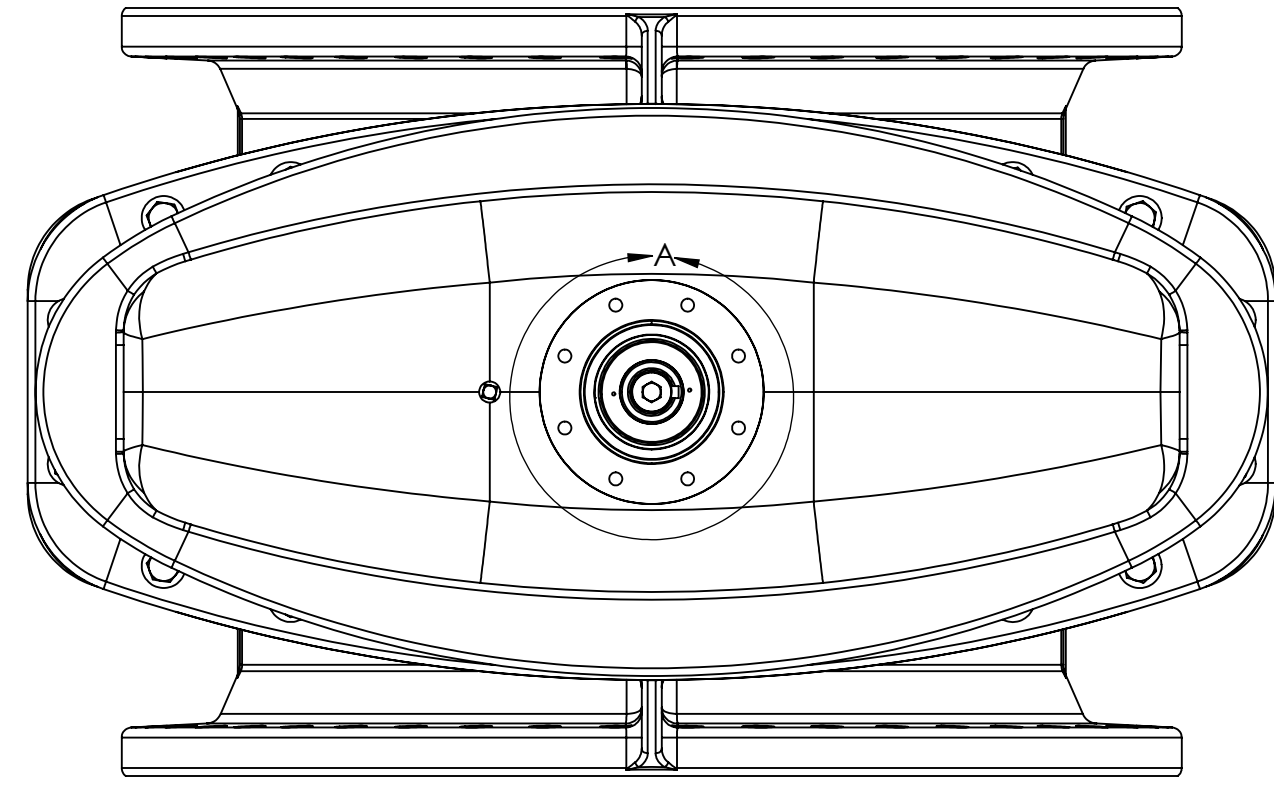


SPUR GEAR WITH OPTIONAL SIDE BYPASS



NOTE: GEARS CAN BE ROTATED IN 45° INCREMENTS FOR SPECIAL APPLICATIONS

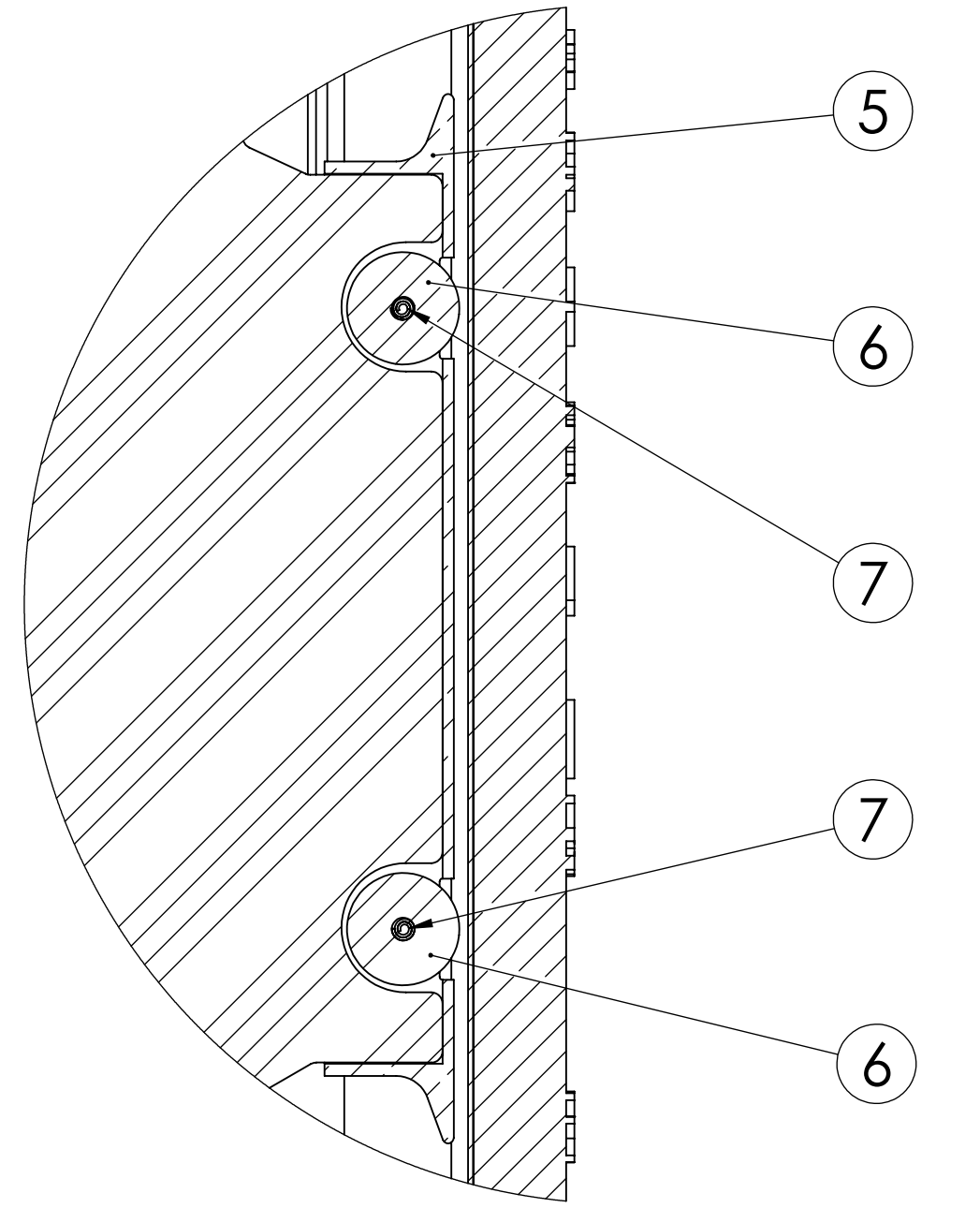
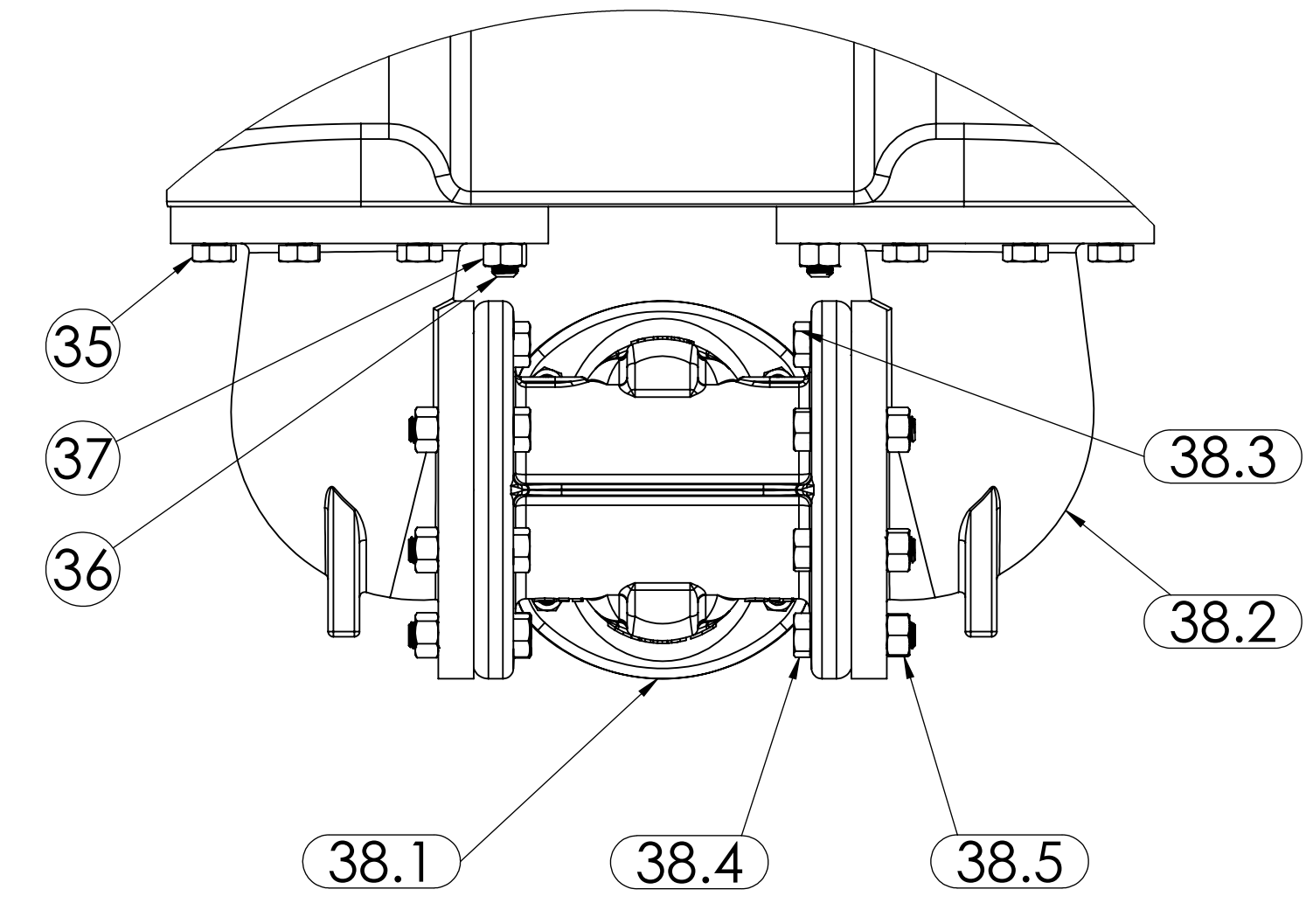
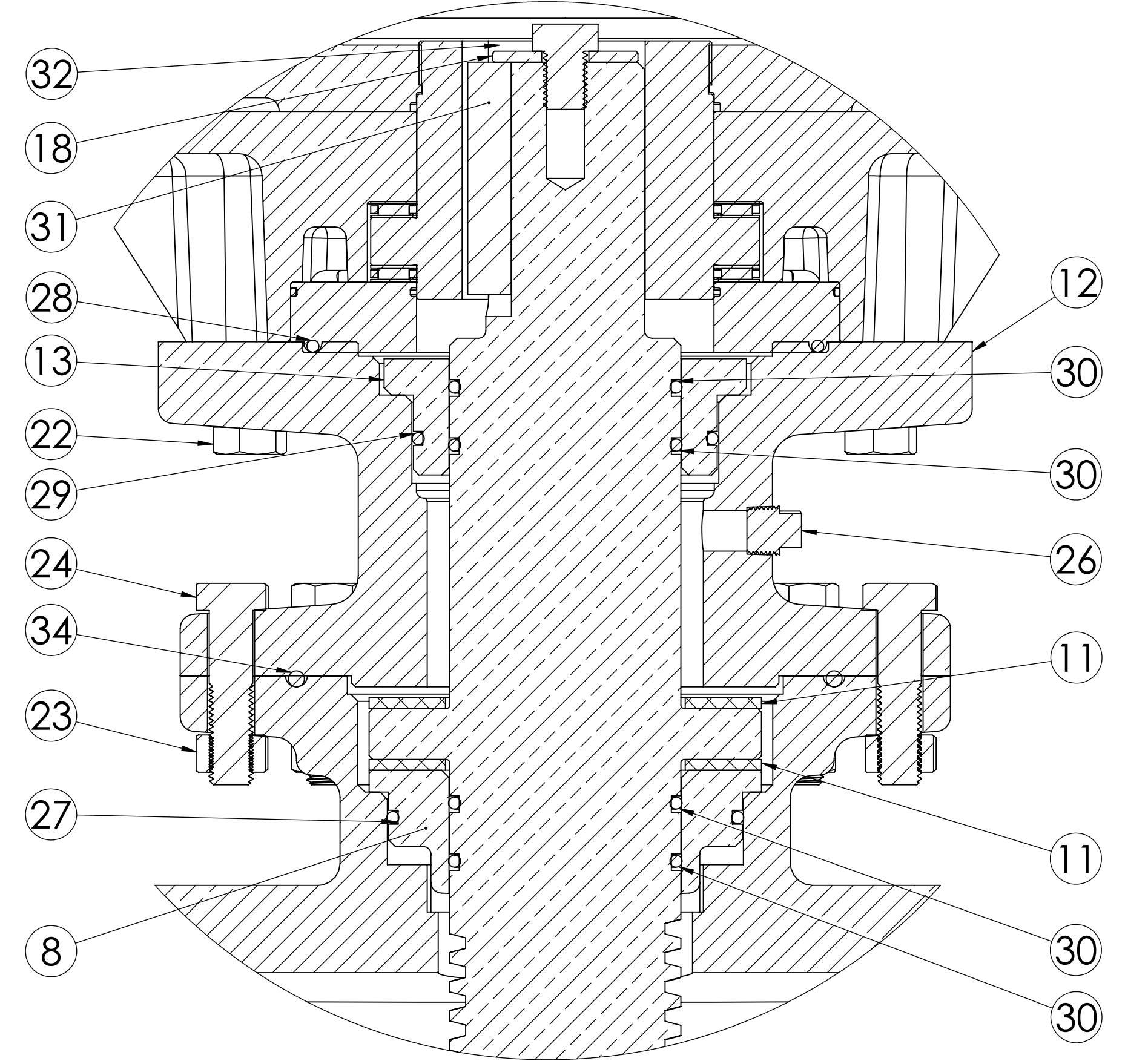
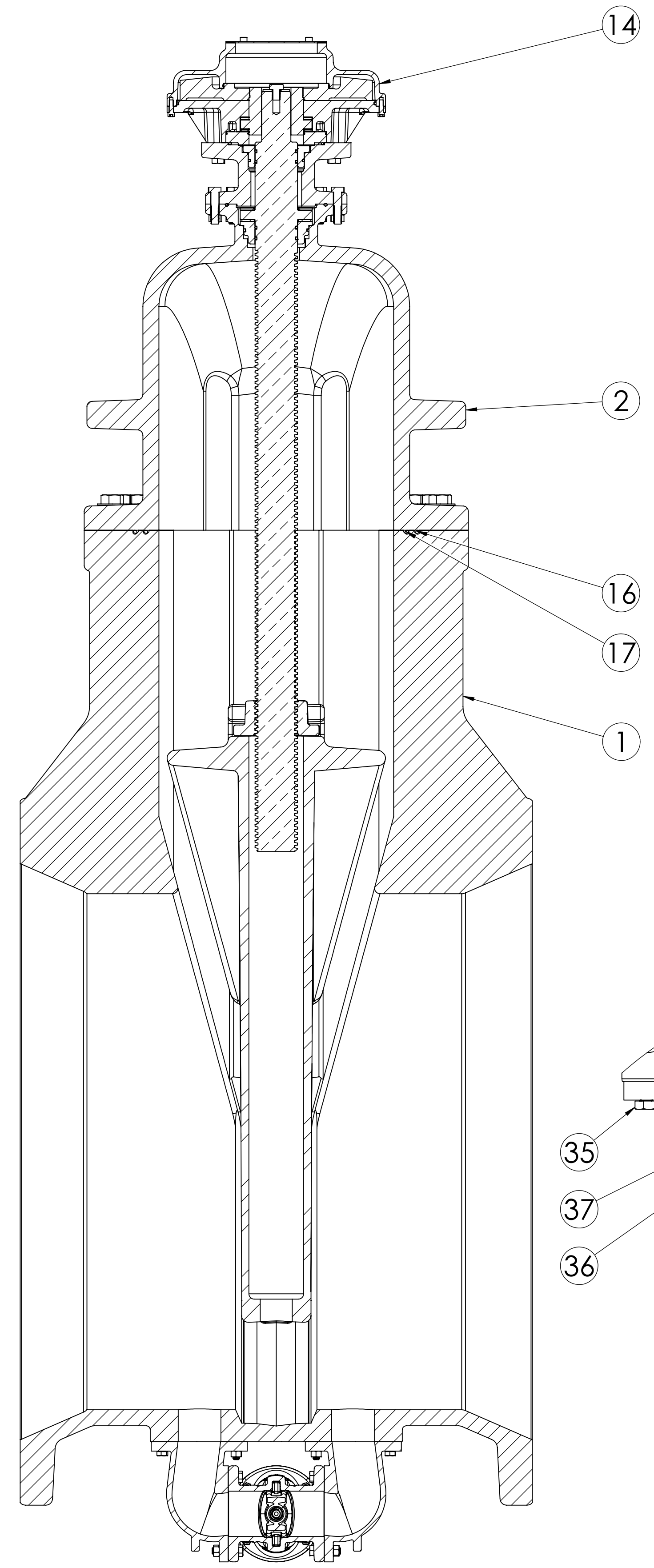
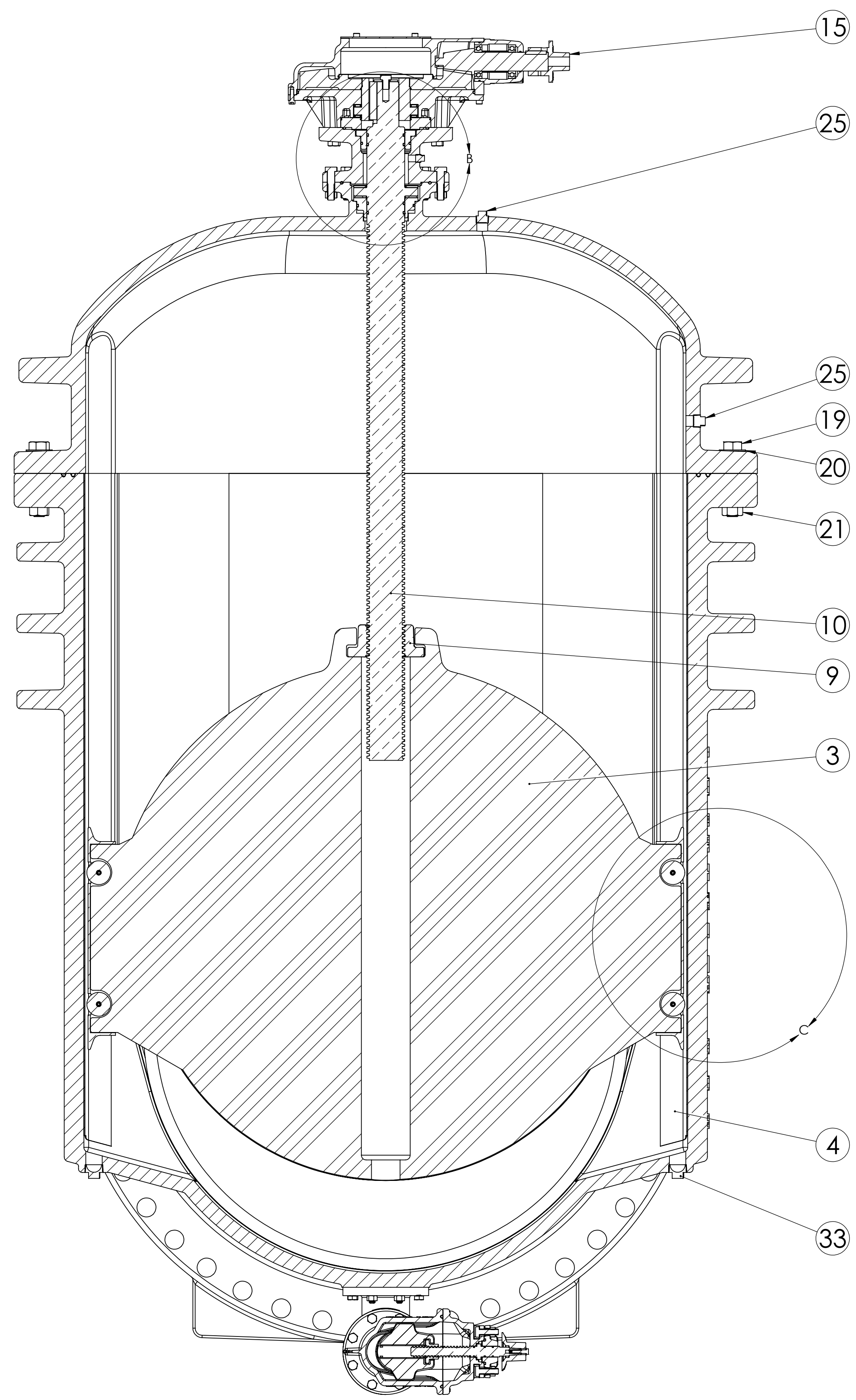
THIRD ANGLE PROJECTION STANDARDS: ANSI/ASME Y14.100, Y14.101, AND Y14.41 TOLERANCES AS FOLLOWS UNLESS OTHERWISE SPECIFIED.		PROPERTY OF MCWANE CORPORATION. ALL DIMENSIONS AND IDENTIFIER DESIGNATION ARE PROPRIETARY TO MCWANE CORPORATION AND ITS SUBSIDIARIES. REPRODUCTION OR USE WITHOUT PERMISSION IS PROHIBITED UNLESS OTHERWISE ARRANGED. ALL RIGHTS RESERVED.		DATE: 01/23/23	DRAWN BY: BLS	CHECKED BY: []	SCALE: 1:12	SHEET NO: 3	TOTAL SHEETS: 6	CLW VALVE CO.
MACHINED DIMENSIONS		CASTING DIMENSIONS		MATERIAL		ESTIMATED WEIGHT		DESCRIPTION		3 6
0.010: ±.005	0.030: ±.015	0.010: ±.005	0.030: ±.015	304	304	LBS.	54" NRS RESILIENT WEDGE GATE VALVE			
0.0005: ±.0005	0.0015: ±.0015	0.0005: ±.0005	0.0015: ±.0015	18-8PT	18-8PT					
ANGLE: ±.2°	MIN RADIUS: 1/8"	ANGLE: ±.2°	MIN RADIUS: 1/8"							
SURFACE FINISH: 125 μin	MIN DRAFT: 1/8°	SURFACE FINISH: 125 μin	MIN DRAFT: 1/8°							



STANDARD FA30
MOUNTING
(X8) Ø .81
ON Ø 11.75 B.C.

DETAIL A
BARE MOUNTING FLG

THIRD ANGLE PROJECTION STANDARDS: ANSI/ASME Y14.100, Y14.101, AND Y14.141 TOLERANCES AS FOLLOWS UNLESS OTHERWISE SPECIFIED.		PROPERTY OF MCWANE CORPORATION. ALL MODELS AND IDENTIFYING DESIGNATION ARE PROPRIETARY TO MCWANE CORPORATION AND ITS SUBSIDIARIES. REPRODUCTION OR USE WITHOUT PERMISSION IS PROHIBITED UNDER OTHERWISE ARRANGED. ALL RIGHTS RESERVED.		DESCRIPTION	CLW VALVE CO.
MACHINED DIMENSIONS	CASTING DIMENSIONS	MATERIAL	ESTIMATED WEIGHT	54" NRS RESILIENT WEDGE GATE VALVE	4 SHEET SIZE
0.125: ± .005	0.4": ± .013		LBS.		6 SHEET OF
0.000: ± .010	0.8": ± .025				
0.000: ± .005	1.2": ± .031				
ANGLE: ± .3°	1.6": ± .040				
SURFACE FINISH: 125 μin	MIN RADIUS: 1/8"				
	MIN DRAFT: 1°				
DESIGNED BY	DATE DRAWN	CHECKED BY	CHECKED DATE	SCALE	NO. OF SHEETS
BLS	01/23/23			1:12	6



THIRD ANGLE PROJECTION STANDARDS: ANSI/ASME Y14.100, Y14.101, AND Y14.41 TOLERANCES AS FOLLOWS UNLESS OTHERWISE SPECIFIED.		PROPERTY OF MCWANE CORPORATION. ALL DIMENSIONS AND IDENTIFYING INFORMATION ARE PROPRIETARY TO MCWANE CORPORATION AND ITS SUBSIDIARIES. REPRODUCTION OR USE WITHOUT PERMISSION IS PROHIBITED UNLESS OTHERWISE ARRANGED. ALL RIGHTS RESERVED.		DATE: 01/23/23	SCALE: 1:8	DESIGNER: BLS	CHECKER: BLS
MACHINED DIMENSIONS	CASTING DIMENSIONS	MATERIAL: 304 SS		DESCRIPTION: 54" NRS RESILIENT WEDGE GATE VALVE		ESTIMATED WEIGHT: LBS.	
0.00: ± 0.00	0.4": ± 0.03	ESTIMATED WEIGHT: LBS.		DRAWN BY: BLS		DATE: 01/23/23	
0.000: ± 0.005	0.5": ± 0.04	ESTIMATED WEIGHT: LBS.		DATE: 01/23/23		SCALE: 1:8	
0.0000: ± 0.0005	0.625": ± 0.04	ESTIMATED WEIGHT: LBS.		DATE: 01/23/23		SCALE: 1:8	
ANGLE: ± 0.5°	1.0": ± 0.06	ESTIMATED WEIGHT: LBS.		DATE: 01/23/23		SCALE: 1:8	
SURFACE FINISH: 125 μin	1.125": ± 0.07	ESTIMATED WEIGHT: LBS.		DATE: 01/23/23		SCALE: 1:8	
	MIN RADIUS: 1/8"	ESTIMATED WEIGHT: LBS.		DATE: 01/23/23		SCALE: 1:8	
	MIN DRAFT: 1°	ESTIMATED WEIGHT: LBS.		DATE: 01/23/23		SCALE: 1:8	

ITEM NO.	COMPONENT	QTY.	SIZE	STANDARD MATERIAL	MATERIAL OPTIONS
1	BODY	1		DUCTILE IRON	
2	COVER	1		DUCTILE IRON	
3	WEDGE	1		EPDM/DUCTILE IRON	
4	TRACK	2		316 SS	
5	SCRAPER	2		C95500	
6	ROLLER	4		C95400	
7	COILED SPRING PIN	4	1/2" x 2-3/4"	18-8 SS	316 SS
8	COVER BUSHING	1		C87850	
9	STEM NUT	1		C87850	C87610 (LOW ZINC)
10	STEM	1		C86200	C99500 (LOW ZINC), 304 SS, 316 SS
11	THRUST WASHER	2		NYLATRON	
12	ACTUATOR EXTENSION	1		DUCTILE IRON	
13	STEM GUIDE BUSHING	1		C87850	
14	BEVEL GEAR	1			SPUR GEAR
15	OPERATING NUT	1		DUCTILE IRON	** Ø 32" HANDWHEEL **
16	O-RING	1	0.375" X 50.375"	EPDM	BUNA-N
17	O-RING	1	0.375" X 48.375"	EPDM	BUNA-N
18	KEY KEEPER	1		C95400	
19	CAPSCREW	20	1-1/4" - 7 X 7"	18-8 SS	316 SS
20	FLAT WASHER	20	1-1/4"	18-8 SS	316 SS
21	HEX NUT	20	1-1/4" - 7	18-8 SS	316 SS
22	CAPSCREW	8	3/4" - 10 X 2-1/2"	18-8 SS	316 SS
23	HEX NUT	8	3/4" - 10	18-8 SS	316 SS
24	CAPSCREW	8	3/4" - 10 X 3"	18-8 SS	316 SS
25	PLUG	2	1" NPT	304 SS	316 SS
26	PLUG	1	1/2" NPT	316 SS	BUNA-N
27	O-RING	1	#359	EPDM	BUNA-N
28	O-RING	1	#371	EPDM	BUNA-N
29	O-RING	1	#352	EPDM	BUNA-N
30	O-RING	4	#342	EPDM	BUNA-N
31	KEY	1	3/4" X 3/4" X 4"	18-8 SS	316 SS
32	CAPSCREW	1	3/4" - 10 X 1"	18-8 SS	316 SS
33	PLUG	2	1-1/2" NPT	316 SS	
34	O-RING	1	#447	EPDM	BUNA-N
35	CAPSCREW	12	5/8" - 11 X 1-3/4"	18-8 SS	316 SS
36	STUD	4	5/8" - 11 X 2-1/2"	18-8 SS	316 SS
37	HEX NUT	4	5/8" - 11	18-8 SS	316 SS
38	4 X 4 BYPASS ASSEMBLY	1			
38.1	04" C509 NRS VALVE ASSEMBLY	1			
38.2	ELBOW	2		DUCTILE IRON	
38.3	CAPSCREW	4	5/8" - 11 X 1-1/2"	18-8 SS	316 SS
38.4	CAPSCREW	12	5/8" - 11 X 2-1/2"	18-8 SS	316 SS
38.5	HEX NUT	12	5/8" - 11	18-8 SS	316 SS

VALVES CONFORM WITH FOLLOWING STANDARDS

- AWWA C515
- NSF 61

LOW ZINC BRASS STEM AND STEM NUT OPTIONS AVAILABLE

100% DOMESTIC FASTENERS AND ORING OPTIONS AVAILABLE

OPEN LEFT (CLOCKWISE) AND OPEN RIGHT (COUNTERCLOCKWISE) OPTIONS AVAILABLE

URNS TO OPEN FROM FULLY CLOSED: 800

- ±5% WITH STANDARD 8:1 BEVEL OR SPUR GEAR

AWWA MAXIMUM ALLOWABLE CLOSING TORQUE 250 FT-LB INTO STANDARD GEARING

OPTIONAL HANDWHEELS CAN BE SUBSTITUTED FOR STAND 2" SQUARE OPERATING NUTS

- **NOTE STANDARD HANDWHEEL SIZE CALLED OUT IN PARTS LIST**

OPTIONAL 4" BYPASS VALVE

- TURNS TO OPEN 12
- AWWA MAXIMUM ALLOWABLE TORQUE 75 FT-LB

BOTH BOTTOM BYPASS AND SIDE BYPASS ASSEMBLIES USE SAME COMPONENTS

MAXIMUM PRESSURE RATING 250 PSI

NOTE: LINE ITEMS 35-38 ARE ONLY INCLUDED IN VALVE WITH BOTTOM BYPASS OR SIDE BYPASS OPTIONS

THIRD ANGLE PROJECTION STANDARDS: ANSI/ASME Y14.1, Y14.2, Y14.3, Y14.4, Y14.5, Y14.6, Y14.7, Y14.8, Y14.9, Y14.10, Y14.11, Y14.12, Y14.13, Y14.14, Y14.15, Y14.16, Y14.17, Y14.18, Y14.19, Y14.20, Y14.21, Y14.22, Y14.23, Y14.24, Y14.25, Y14.26, Y14.27, Y14.28, Y14.29, Y14.30, Y14.31, Y14.32, Y14.33, Y14.34, Y14.35, Y14.36, Y14.37, Y14.38, Y14.39, Y14.40, Y14.41, Y14.42, Y14.43, Y14.44, Y14.45, Y14.46, Y14.47, Y14.48, Y14.49, Y14.50, Y14.51, Y14.52, Y14.53, Y14.54, Y14.55, Y14.56, Y14.57, Y14.58, Y14.59, Y14.60, Y14.61, Y14.62, Y14.63, Y14.64, Y14.65, Y14.66, Y14.67, Y14.68, Y14.69, Y14.70, Y14.71, Y14.72, Y14.73, Y14.74, Y14.75, Y14.76, Y14.77, Y14.78, Y14.79, Y14.80, Y14.81, Y14.82, Y14.83, Y14.84, Y14.85, Y14.86, Y14.87, Y14.88, Y14.89, Y14.90, Y14.91, Y14.92, Y14.93, Y14.94, Y14.95, Y14.96, Y14.97, Y14.98, Y14.99, Y14.100		PROPERTY OF MCWANE CORPORATION ALL DIMENSIONS AND TOLERANCES ARE PROPRIETARY TO MCWANE CORPORATION AND ITS SUBSIDIARIES. NO PART OF THIS DRAWING IS TO BE REPRODUCED OR TRANSMITTED IN ANY FORM OR BY ANY MEANS, ELECTRONIC OR MECHANICAL, WITHOUT THE WRITTEN PERMISSION OF MCWANE CORPORATION. ALL RIGHTS RESERVED.	
MACHINED DIMENSIONS 0.125: ±.005 0.125: ±.010 0.000: ±.005 0.000: ±.005 ANGLE: ±.5° SURFACE FINISH: 125 µin	CASTING DIMENSIONS 0.4": ±.03 0.4": ±.05 0.4": ±.06 12.18": ±.09 18.43": ±.13 MIN. DRAFT: 1/8"	MATERIAL ESTIMATED WEIGHT LBS.	DESCRIPTION 54" NRS RESILIENT WEDGE GATE VALVE
DESIGNED BY BLS	CHECKED BY 01/23/23	SCALE 1:8	SHEET NO. 6