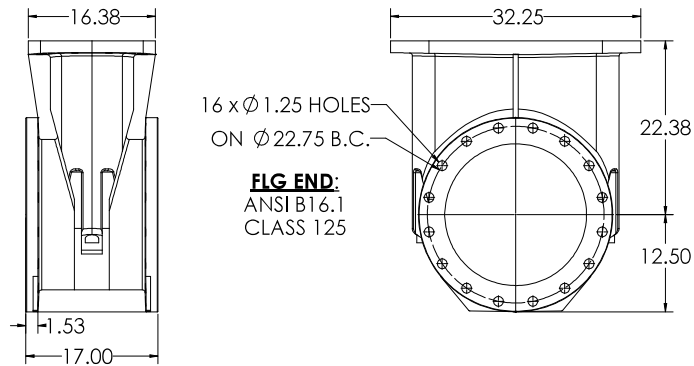
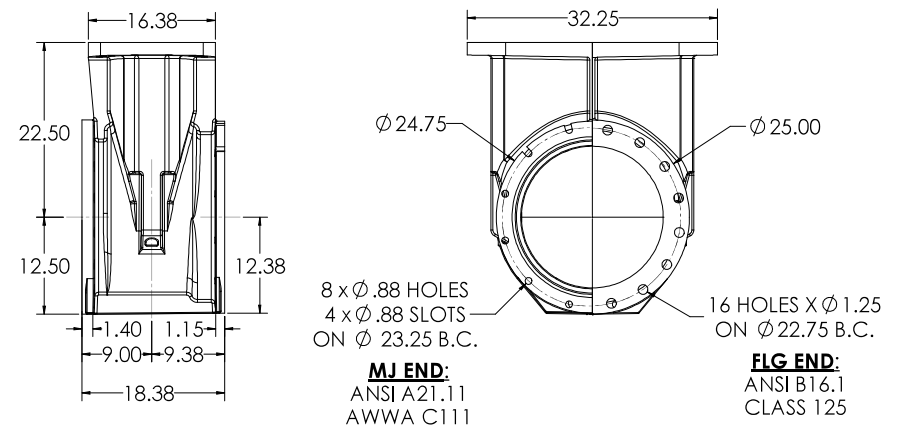


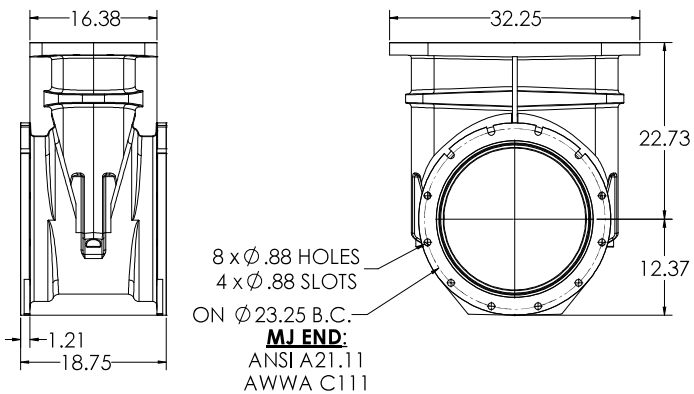
18" C515 FLG X FLG



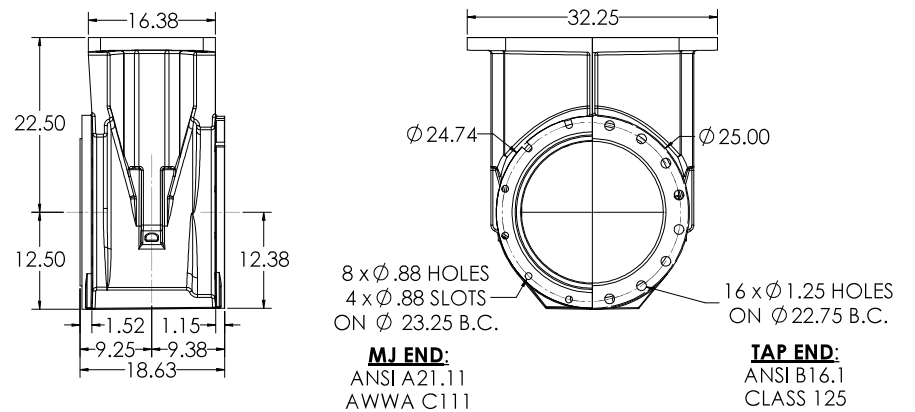
18" C515 FLG X MJ



18" C515 MJ X MJ

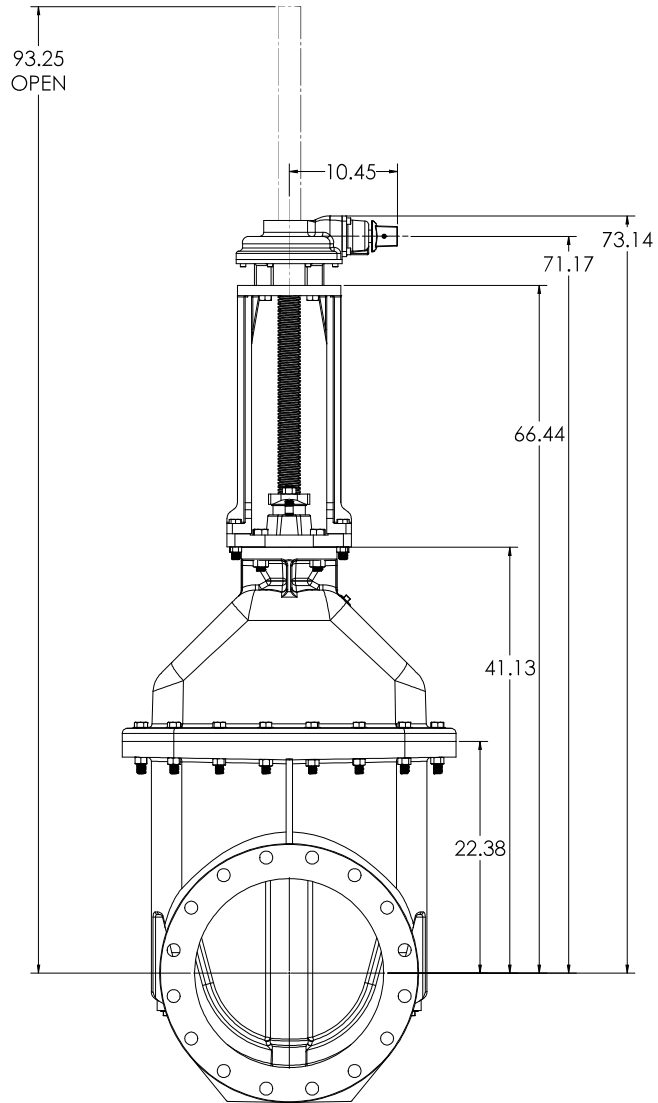


18" C515 MJ X TAP

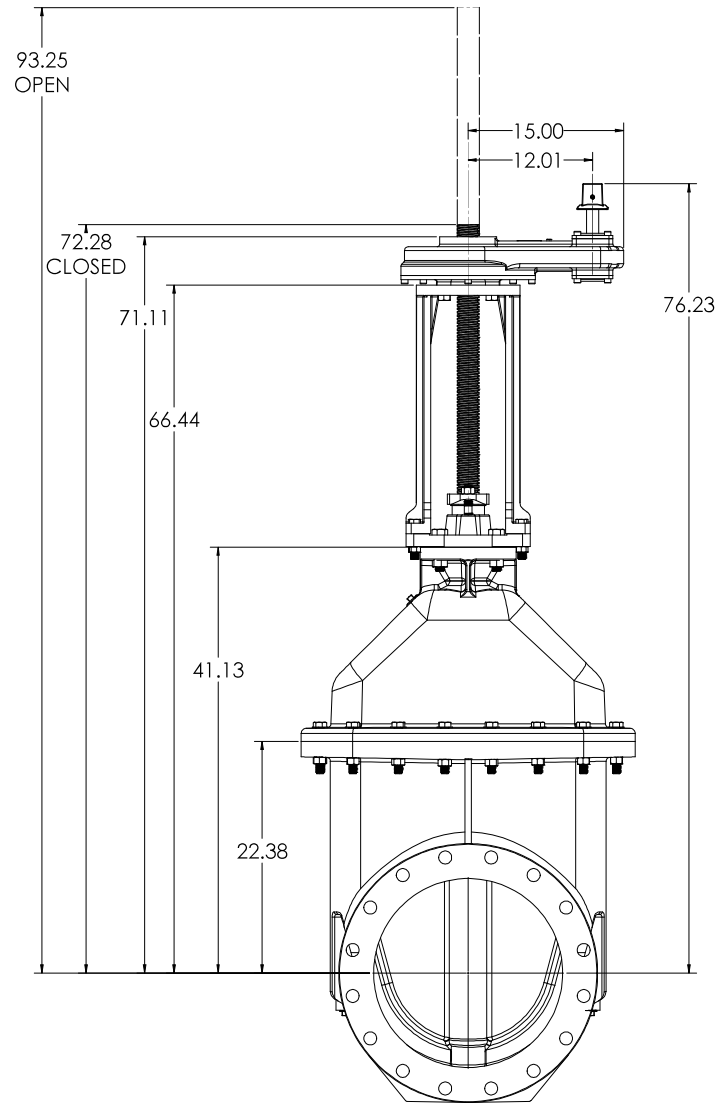


DWG NO: 1041420 DATE: 10/20/18 DRAWN BY: DWI CHECKED BY: T38 PROJECT NO: 18" C515 CS&Y RESILIENT WEDGE GATE VALVE SHEET NO: 7 OF 7		PROJECT: 18" C515 CS&Y RESILIENT WEDGE GATE VALVE SHEET NO: 7 OF 7	CLW 10/20/18
---	--	---	-----------------

BEVEL GEAR WITH OPERATING NUT

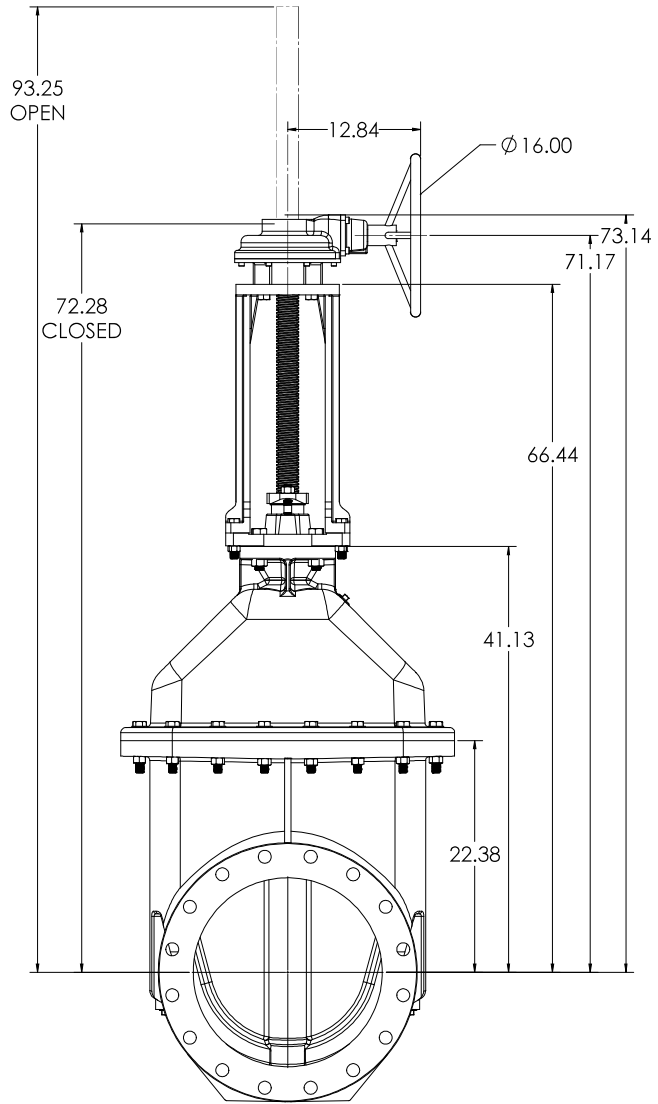


SPUR GEAR WITH OPERATING NUT

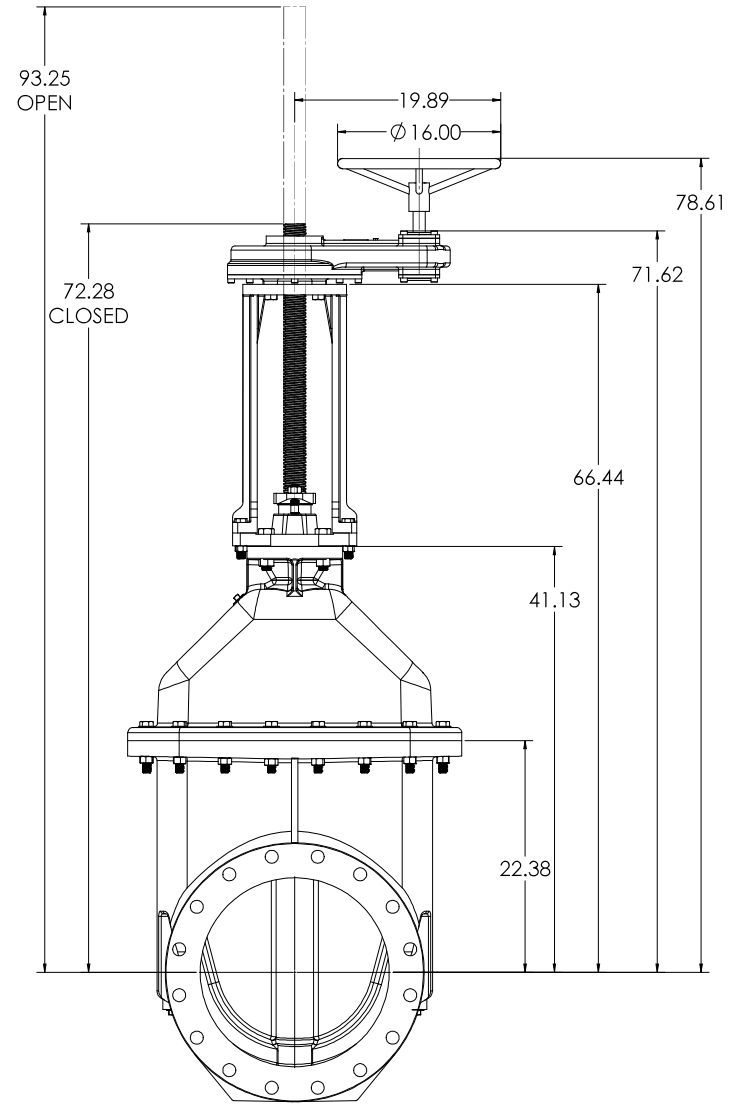


DWG NO: 104120 DATE: 01/11/16 DRAWN BY: DWI CHECKED BY: TSD APPROVED BY: [Signature]		PROJECT NO: 104120 PROJECT NAME: 18" CS15 CS&Y RESILIENT WEDGE GATE VALVE SCALE: 1:5 SHEET NO: 7 TOTAL SHEETS: 7		COMPANY: CLW LOGO: [CLW Logo]
--	--	--	--	----------------------------------

BEVEL GEAR WITH HANDWHEEL

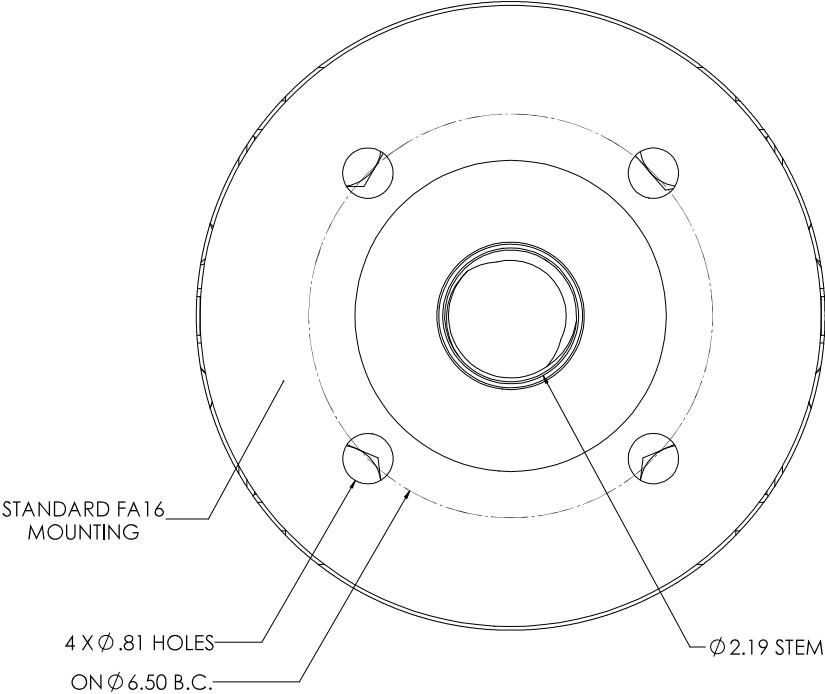
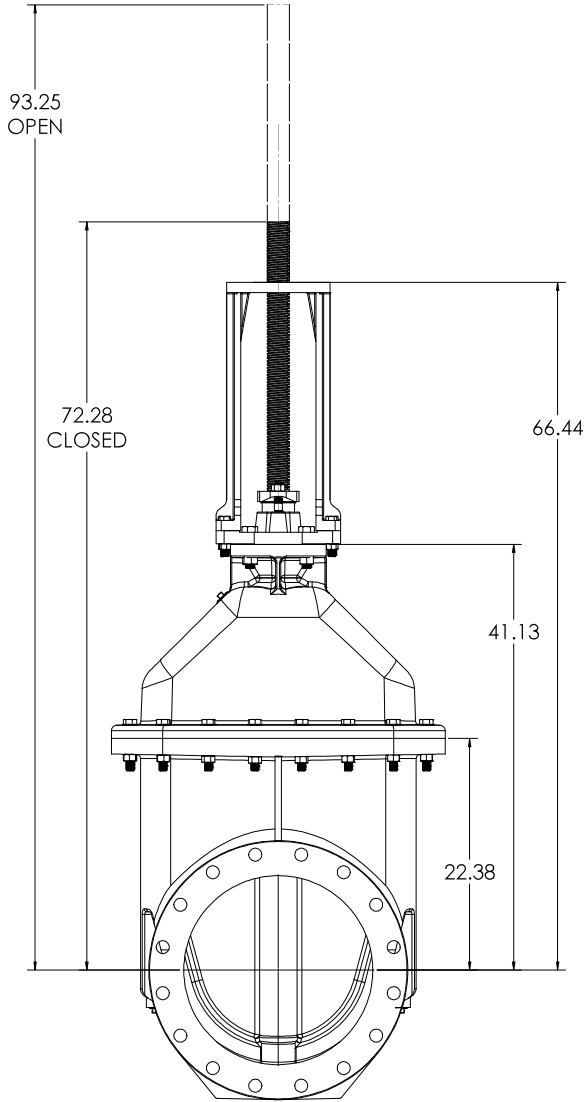


SPUR GEAR WITH HANDWHEEL



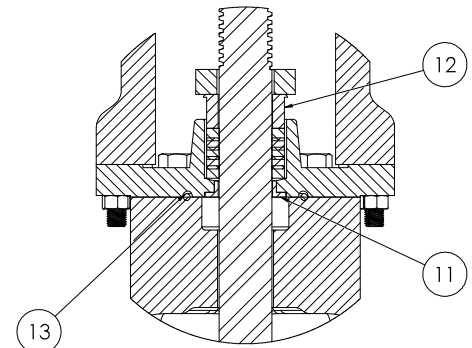
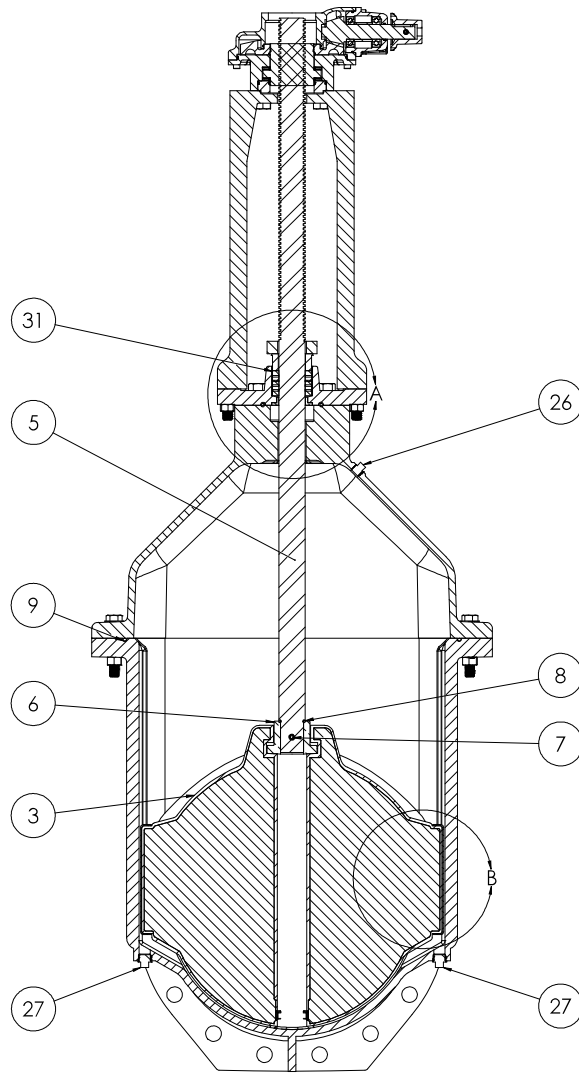
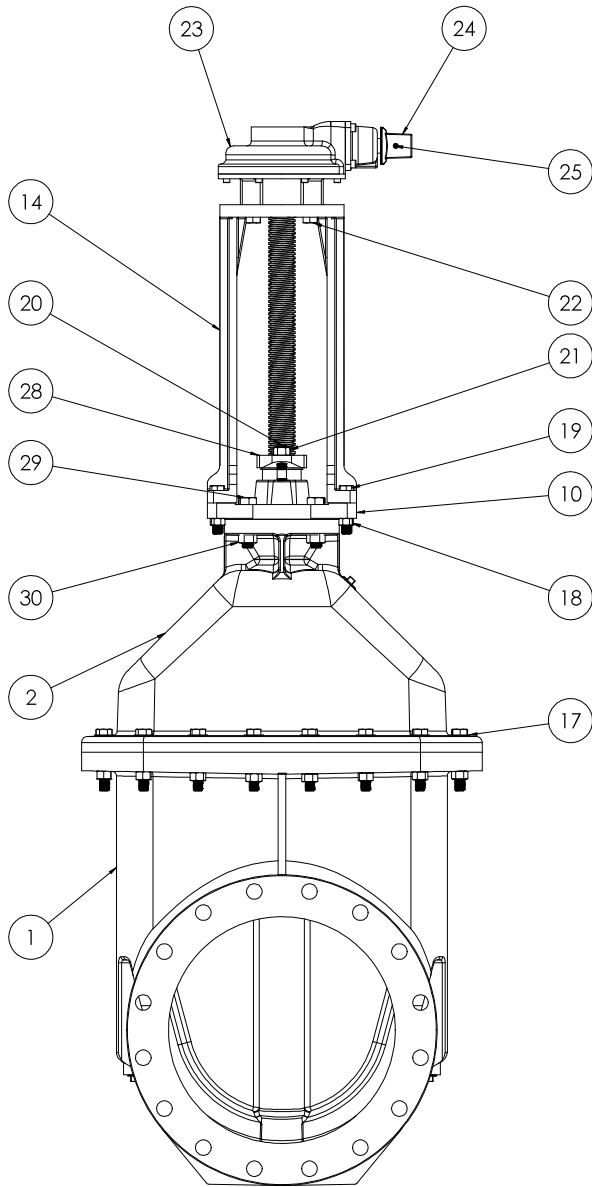
CLW CONSTRUCTION LOGIC WORKS 10000 W. 100th Ave., Suite 100 Denver, CO 80231 (303) 751-1000 www.clw.com		PROJECT: 18" CS15 CS&Y RESILIENT WEDGE GATE VALVE LBS. GATE VALVE T:6 Scale: 1:6 DWG: 1541420		SHEET: 3 TOTAL: 7 DATE: 1/15/16 DRAWN BY: [Signature]
---	--	---	--	--

BARE STEM

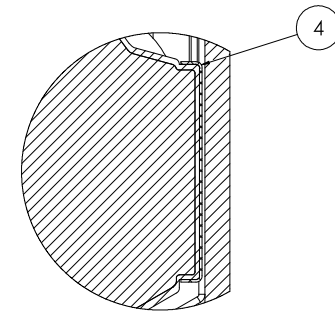


**BARE STEM
MOUNTING FLANGE**

DWG NO: 1041420 DATE: 1/15/16 DRAWN BY: DWI CHECKED BY: TSK APPROVED BY: TSK		PROJECT NO: 1041420 PROJECT NAME: 18" CS15 CS&Y RESILIENT WEDGE GATE VALVE SHEET NO: 7 TOTAL SHEETS: 7		SCALE: T:6 MATERIAL: LBS	DRAWN BY: DWI CHECKED BY: TSK APPROVED BY: TSK	DATE: 1/15/16 SHEET NO: 7 TOTAL SHEETS: 7
--	--	---	--	-----------------------------	--	---



DETAIL A



DETAIL B

COMPANY: CLW ADDRESS: 10000 W. 10th Ave., Suite 100 Denver, CO 80202 PHONE: 303.751.1000 FAX: 303.751.1001 WWW: www.clw.com		PROJECT: 18" CS15 CS&Y RESILIENT WEDGE LBS. GATE VALVE DWG: 1341420 DATE: 1/15/10		SCALE: 1:5 SHEET: 5 TOTAL SHEETS: 7		CLW 18" CS15 CS&Y RESILIENT WEDGE LBS. GATE VALVE DWG: 1341420 DATE: 1/15/10
--	--	--	--	---	--	--

ITEM NO.	COMPONENT	QTY.	SIZE	STANDARD MATERIAL	MATERIAL OPTIONS
1	BODY	1	-	DUCTILE IRON	-
2	COVER	1	-	DUCTILE IRON	-
3	WEDGE	1	-	EPDM/DUCTILE IRON	-
4	WEDGE CAP	4	-	DELFIN	-
5	STEM	1	2 1/8"	C65500	304 SS, 316 SS
6	STEM NUT	1	-	C86200	C99500 304 ss, 316 SS
7	COILED SPRING PIN	1	1/2" X 3 1/4"	303 SS	-
8	O-RING	1	#327	EPDM	BUNA-N
9	O-RING	1	#469	EPDM	BUNA-N
10	STUFFING BOX	1	-	DUCTILE IRON	-
11	BUSHING	1	-	C87850	-
12	GLAND	1	-	C87850	-
13	O-RING	1	#425	epdm	buna-n
14	YOKE	1	-	DUCTILE IRON	-
15	HEX HEAD CAPSCREW	16	3/4"-10 X 4 1/2"	18-8 ss	316 ss
16	HEX NUT	16	3/4"-10	18-8 SS	316 ss
17	FLAT WASHER	16	3/4"-10	18-8 SS	316 ss
18	HEX NUT	8	5/8"-11	18-8 SS	316 ss
19	HEX HEAD CAPSCREW	8	5/8"-11 X 3 1/2"	18-8 ss	316 ss
20	STUD	2	3/4" X 3 3/4"	YELLOW ZINC	316 ss
21	HEX NUT	2	3/4"-10	BRASS	-
22	HEX HEAD CAPSCREW	4	3/4"-10 X 3 1/2"	18-8 ss	316 ss
23	BEVEL GEAR	1	-	-	-
24	OPERATING NUT	1	-	DUCTILE IRON	304 SS, C86700 ** Ø 16" handwheel**
25	COILED SPRING PIN	1	10mm X 45mm	302 SS OR 304 SS	-
26	PIPE PLUG	1	1/2" - NPT	304 SS	316 ss
27	PIPE PLUG	2	3/4" - NPT	18-8 SS	316 SS
28	FOLLOWER PLATE	1	-	DUCTILE IRON	-
29	HEX HEAD CAP SCREW	4	7/8"-9 X 3 1/2"	18-8 ss	316 ss
30	HEX NUT	4	7/8"-9	18-8 SS	316 ss
31	PACKING	5	1/2" X 1/2" 8 1/2"	BRAIDED FLAX	-

VALVES CONFORM WITH FOLLOWING STANDARDS

- AWWA C515
- NSF 61

- LOW ZINC BRASS STEM AND STEM NUT AVAILABLE

- 100% DOMESTIC FASTENER AND O-RING OPTIONS AVAILABLE

- OPEN LEFT (COUNTERCLOCKWISE) AND OPEN RIGHT (CLOCKWISE) OPTIONS AVAILABLE

- TURNS TO OPEN FROM FULLY CLOSED: 192
 - +/- 5% WITH STANDARD 3:1 BEVEL OR SPUR GEAR

- AWWA MAXIMUM ALLOWABLE CLOSING TORQUE 250 FT-LBS WITH STANDARD GEARING

- OPTIONAL HANDWHEEL CAN BE SUBSTITUTED FOR STANDARD 2" SQUARE OP NUTS
 - **NOTE: STANDARD HANDWHEEL SIZE CALLED OUT IN PARTS LIST**

- MAXIMUM PRESSURE RATING 250 PSI

<small> COMPANY: CLW ADDRESS: 1800 S. 10th St., Tulsa, OK 74119 PHONE: (918) 436-1111 FAX: (918) 436-1112 WWW: www.clw.com </small>		<small> PROJECT: 18" CS15 CS&Y RESILIENT WEDGE GATE VALVE SHEET NO: 6 TOTAL SHEETS: 7 </small>		<small> DWG: 124120 DATE: 1/15/15 SCALE: 1:5 DRAWN BY: SJK CHECKED BY: SJK </small>	<small> PROJECT NO: 2015-002 SHEET NO: 6 TOTAL SHEETS: 7 </small>	<small> CLW 18" CS15 CS&Y RESILIENT WEDGE GATE VALVE 6 7 </small>
---	--	--	--	---	---	--