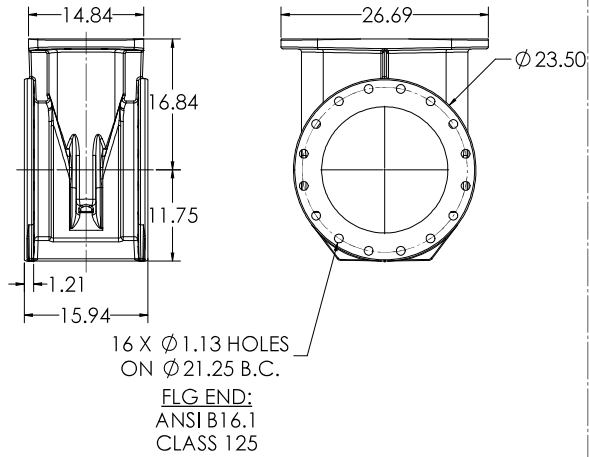
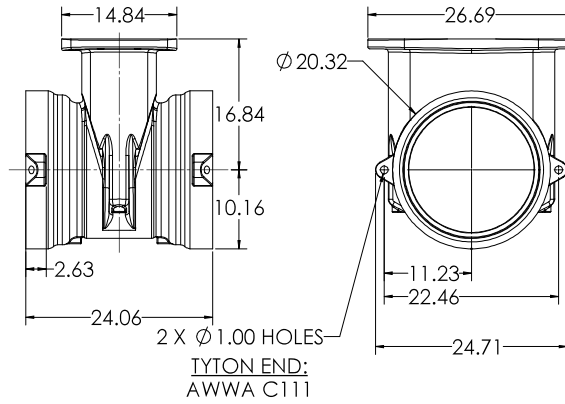


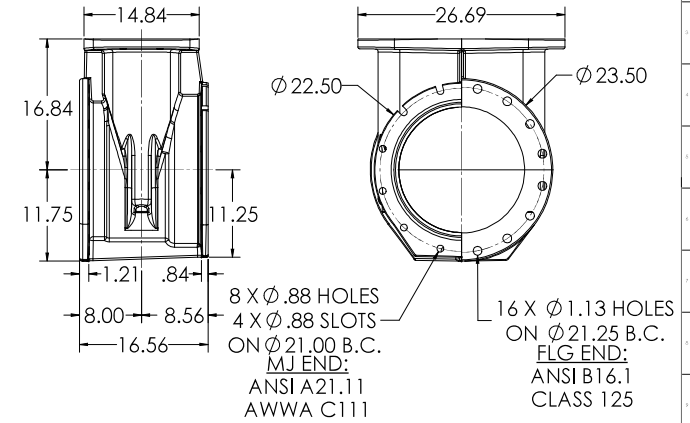
**16" C515 FLG X FLG**



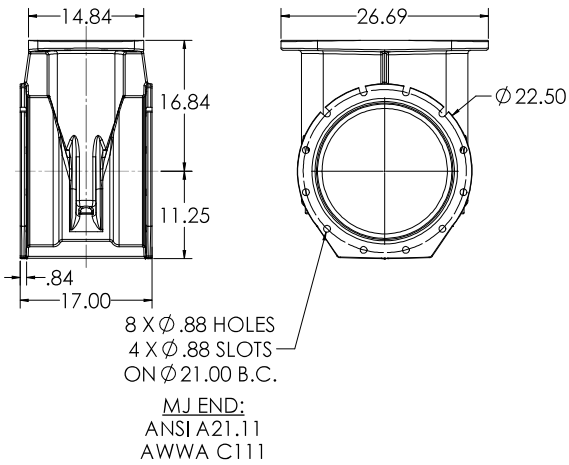
**16" C515 TYTON X TYTON**



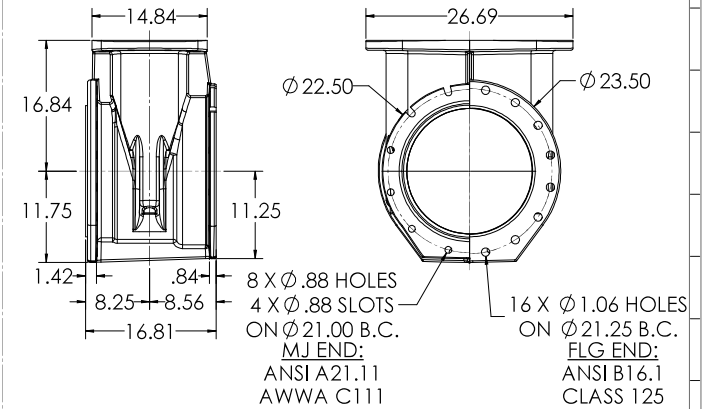
**16" C515 MJ X FLG**



**16" C515 MJ X MJ**

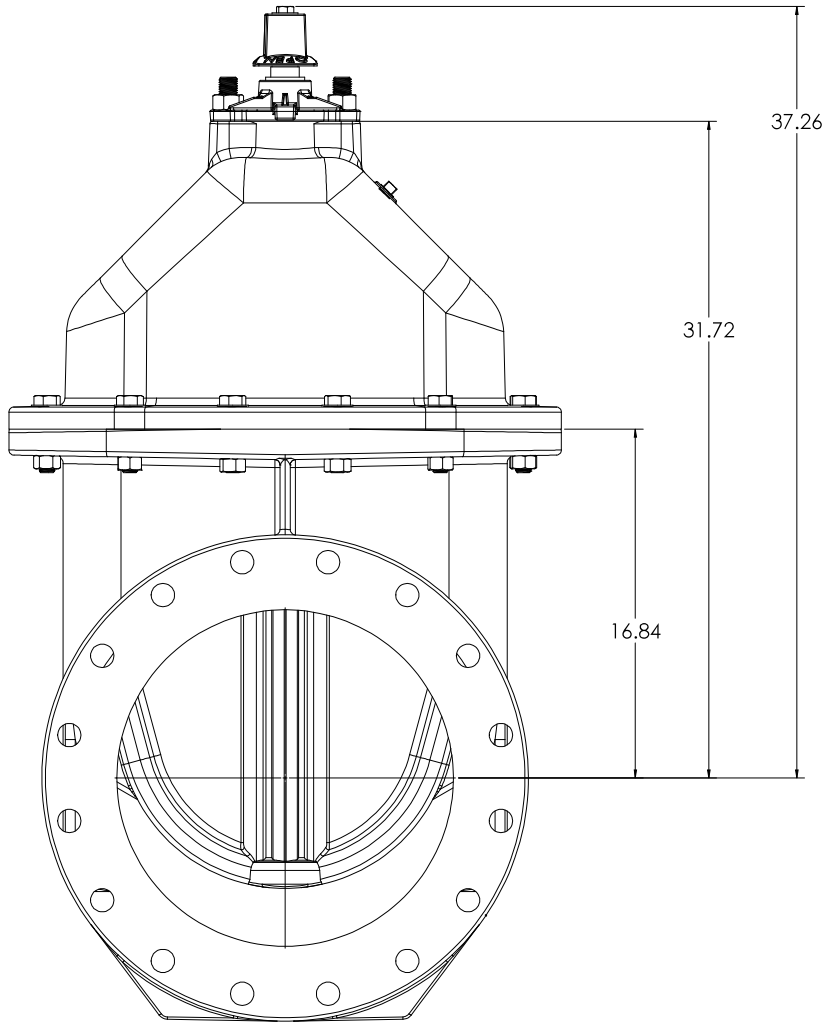


**16" C515 MJ X TAP**

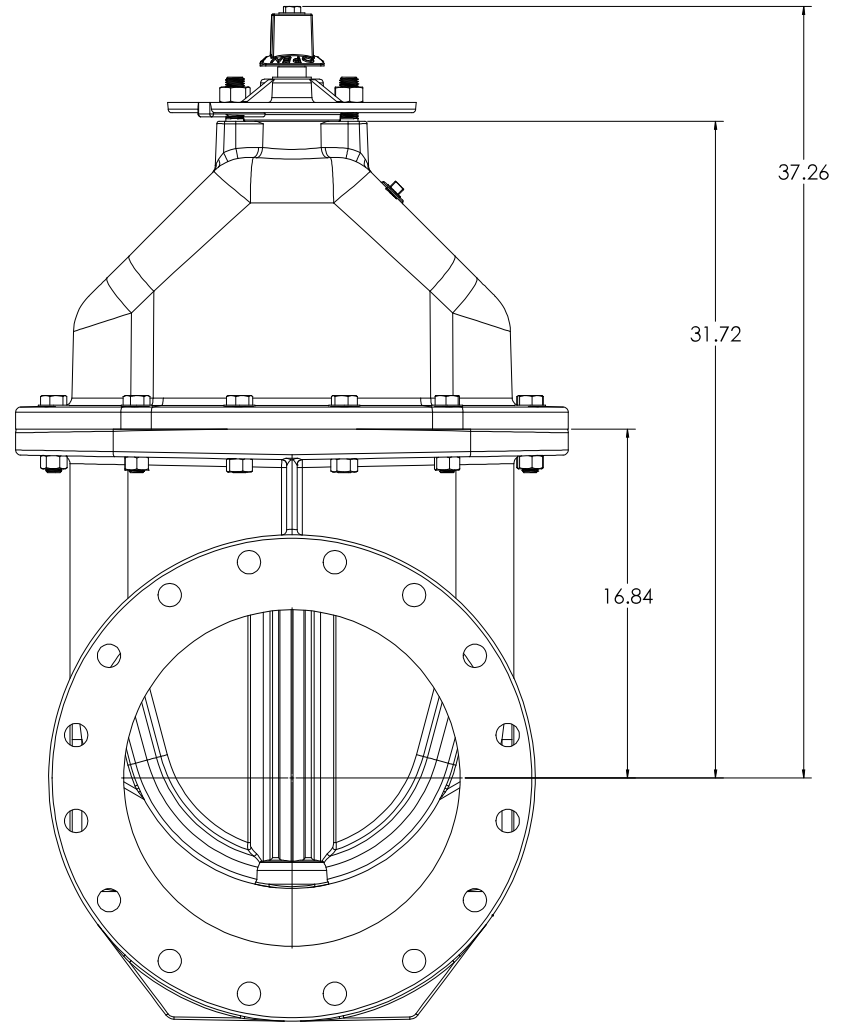


COMPANY: CLW ADDRESS: 1224/2020 PHONE: 714-942-1111 FAX: 714-942-1112 E-MAIL: info@clw.com WEBSITE: www.clw.com		PROJECT: 16" C515 NRS RESILIENT WEDGE LBS. GATE VALVE T88 DATE: 12/4/2020 DRAWN BY: T88 CHECKED BY: T88 APPROVED BY: T88		SHEET NO: 6 TOTAL SHEETS: 6
--	--	--	--	--------------------------------

**OPERATING NUT WITH  
O-RING PLATE**

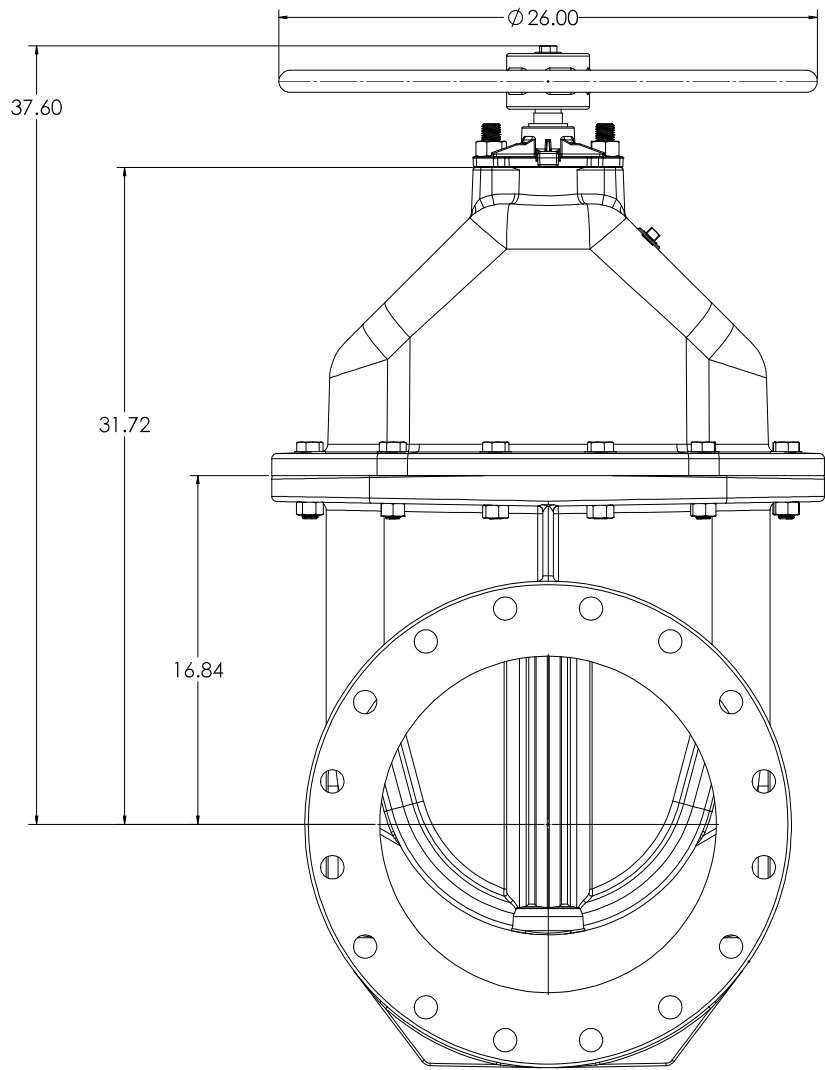


**OPERATING NUT WITH INDICATOR  
POST PLATE**



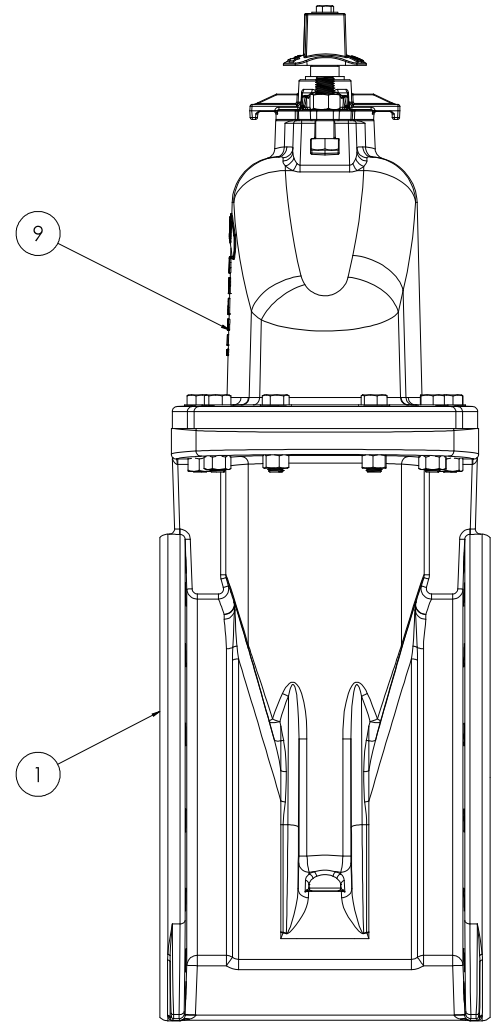
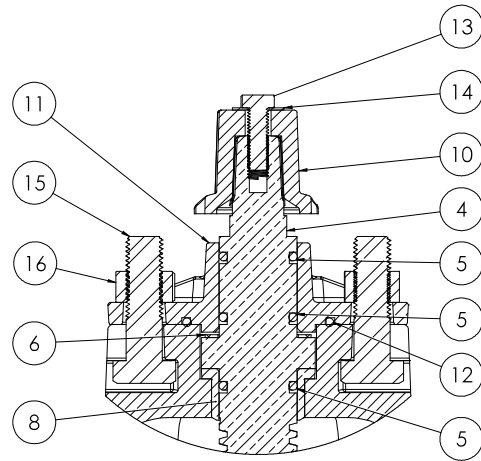
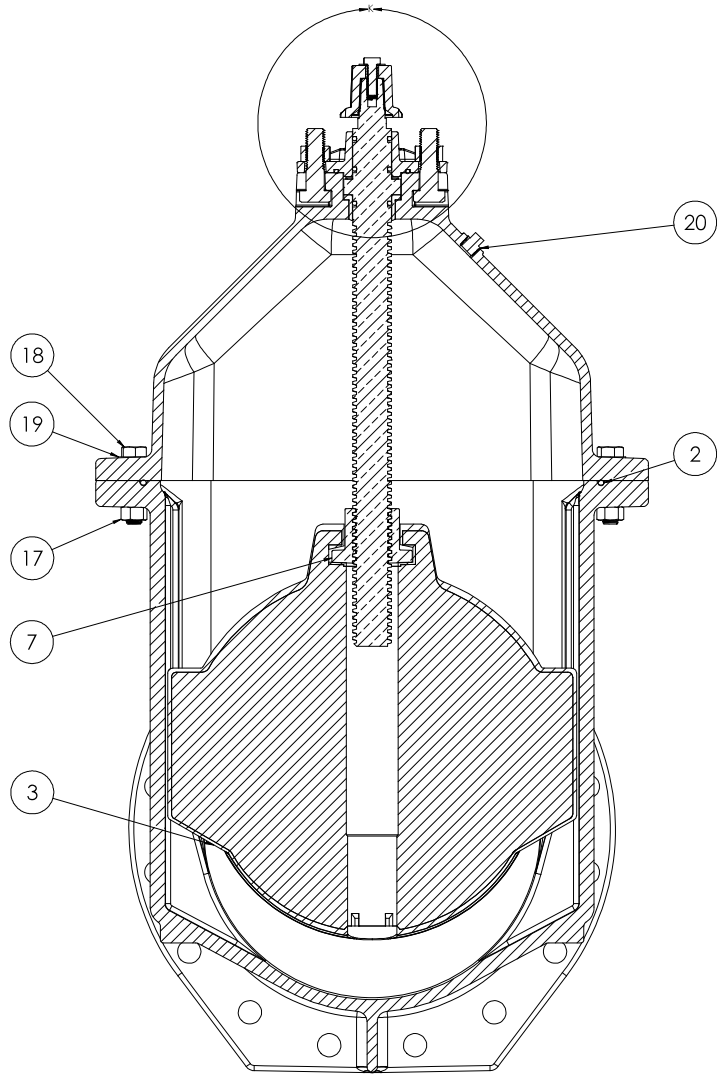
COMPANY: CLW ADDRESS: 12345 INDUSTRIAL BLVD CITY: NEW YORK, NY 10001 PHONE: (212) 555-1234 FAX: (212) 555-5678 E-MAIL: SALES@CLW.COM WEBSITE: WWW.CLW.COM		PROJECT: 16" CS18 NRS RESILIENT WEDGE GATE VALVE LBS.		DRAWING NO.: 2 SHEET NO.: 6 DATE: 12/4/2009 SCALE: 1:3 DESIGNED BY: CW CHECKED BY:		PROJECT NO.: 2018 SP2 DRAWING DATE: 12/4/2009 SCALE: 1:3 DESIGNED BY: CW CHECKED BY:		CLW 12/4/2009
---	--	---	--	---	--	--	--	------------------

# HANDWHEEL WITH O-RING PLATE



COMPANY: CLW ADDRESS: 1224/2020 PHONE: 609-426-1100 FAX: 609-426-1101 EMAIL: sales@clw.com		PROJECT: 16" CS18 NRS RESILIENT WEDGE GATE VALVE DRAWING NO: 1224/2020 DATE: 12/24/2020		SCALE: 1:3 SHEET NO: 3 TOTAL SHEETS: 6	
DRAWN BY: J. B. BROWN CHECKED BY: J. B. BROWN DATE: 12/24/2020		MATERIALS: LBS WEIGHT: 100		PROJECT NO: 1224/2020 SHEET NO: 3 TOTAL SHEETS: 6	

**CLW**  
 1224/2020



SECTION L-L

COMPANY: CLW ADDRESS: 1224/2020 PHONE: 714/941-1111 FAX: 714/941-1112 E-MAIL: sales@clw.com WEBSITE: www.clw.com		PROJECT: 16" CS18 NRS RESILIENT WEDGE GATE VALVE DRAWING NO.: 16" CS18 NRS RESILIENT WEDGE GATE VALVE DATE: 12/24/2020 SCALE: 1:3 SHEET NO.: 4 OF 6		CLW 16" CS18 NRS RESILIENT WEDGE GATE VALVE 4 6
---	--	---	--	--

ITEM NO.	COMPONENT	QTY.	SIZE	STANDARD MATERIAL	MATERIAL OPTIONS
1	BODY	1	-	DUCTILE IRON	-
2	O-RING	1	#463	EPDM	BUNA-N
3	WEDGE	1	-	EPDM/DUCTILE IRON	-
4	STEM	1	-	C86700	C99500 (LOW ZINC), 304SS, 316SS
5	O-RING	3	#325	EPDM	BUNA-N
6	THRUST BEARING	1	-	NYLATRON	-
7	STEM NUT	1	-	C87850	C87610 (LOW ZINC)
8	COVER BUSHING	1	-	C87850	-
9	COVER	1	-	DUCTILE IRON	-
10	OPERATING NUT	1	-	DUCTILE IRON	C86700, 304SS, 316SS, ** $\phi$ 26" HANDWHEEL**
11	O-RING PLATE	1	-	DUCTILE IRON	*INDICATOR POST PLATE*
12	O-RING	1	#339	EPDM	BUNA-N
13	CAPSCREW	1	1/2"-13 X 1-1/2"	18-8 SS	316SS
14	WASHER	1	1/2" FLAT	18-8 SS	316SS
15	CAPSCREW	2	7/8"-9 X 3"	18-8 SS	316SS
16	HEX NUT	2	7/8"-9	18-S SS	316SS
17	HEX NUT	12	3/4"-10	18-8 SS	316SS
18	CAPSCREW	12	3/4"-10 X 3-1/4"	18-8 SS	316SS
19	FLAT WASHER	12	3/4" FLAT	18-8 SS	316SS
20	PLUG	1	1/2" NPT	304 SS	316SS

VALVES CONFORM WITH FOLLOWING STANDARDS

- AWWA C515
- NSF 61

- LOW ZINC BRASS STEM AND STEM NUT AVAILABLE
- 100% DOMESTIC FASTENER AND O-RING OPTIONS AVAILABLE
- OPEN LEFT (COUNTERCLOCKWISE) AND OPEN RIGHT (CLOCKWISE) OPTIONS AVAILABLE
- TURNS TO OPEN FROM FULLY CLOSED: 52 (+/- 5%)
- AWWA MAXIMUM ALLOWABLE CLOSING TORQUE 275 FT-LBS
- OPTIONAL HANDWHEEL CAN BE SUBSTITUTED FOR STANDARD 2" SQUARE OP NUTS
  - \*\*NOTE: STANDARD HANDWHEEL SIZE CALLED OUT IN PARTS LIST\*\*
- MAXIMUM PRESSURE RATING 250 PSI

16" CS16 NRS RESILIENT WEDGE GATE VALVE LBS.	12/24/2020 CW	1:3 5 6	5 D	<b>CLW</b> WATER CO.
---	------------------	---------------	--------	-------------------------