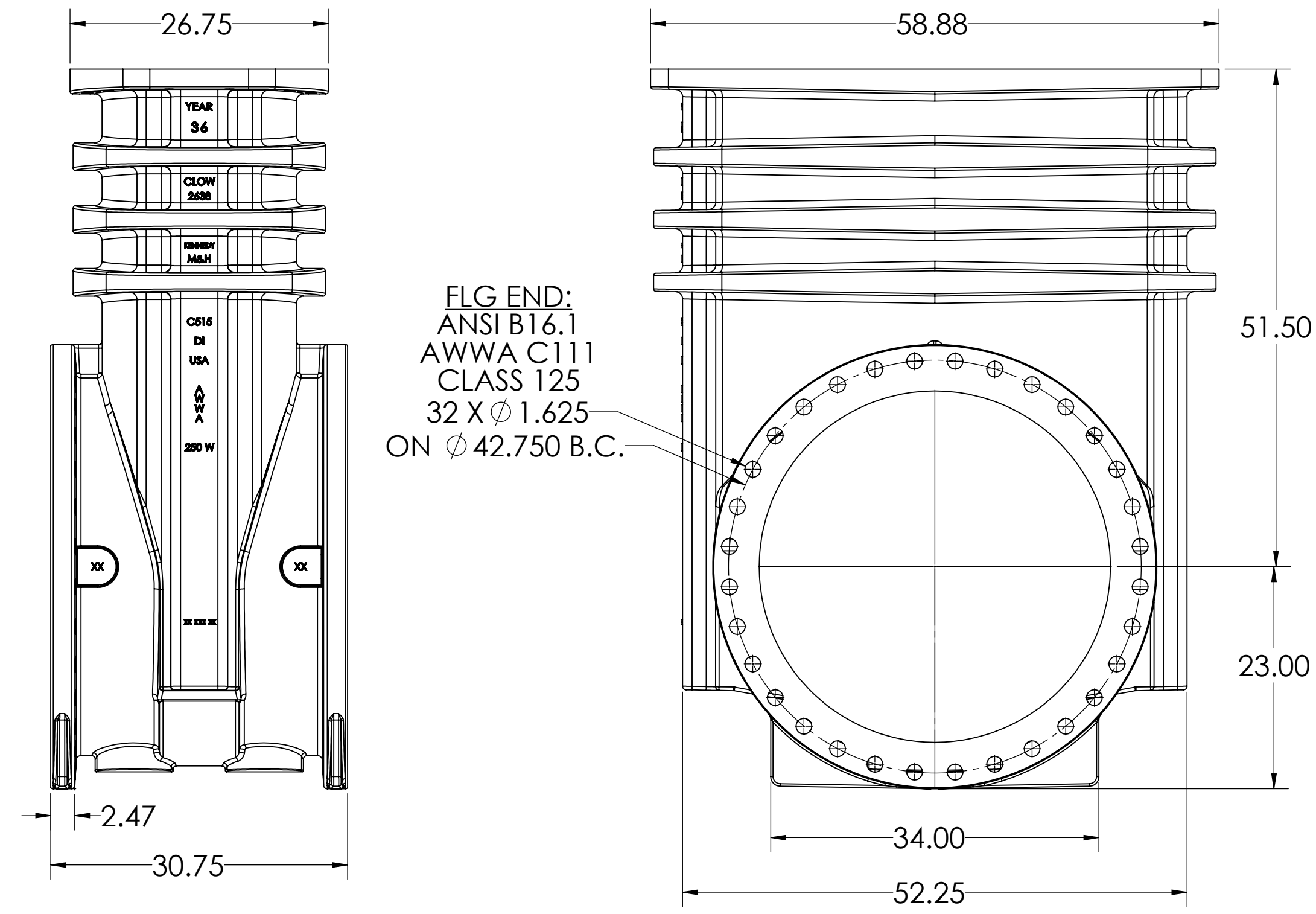
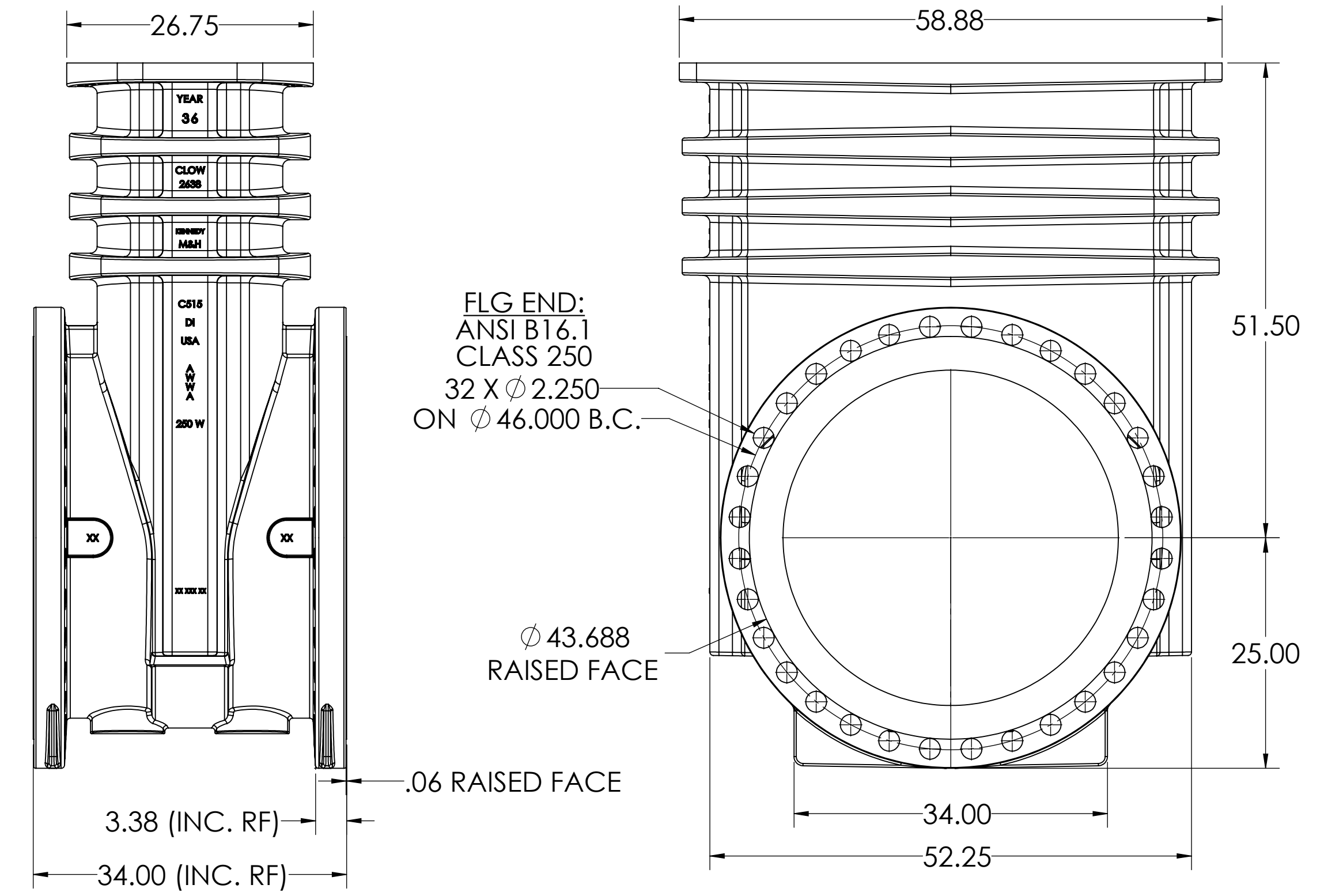


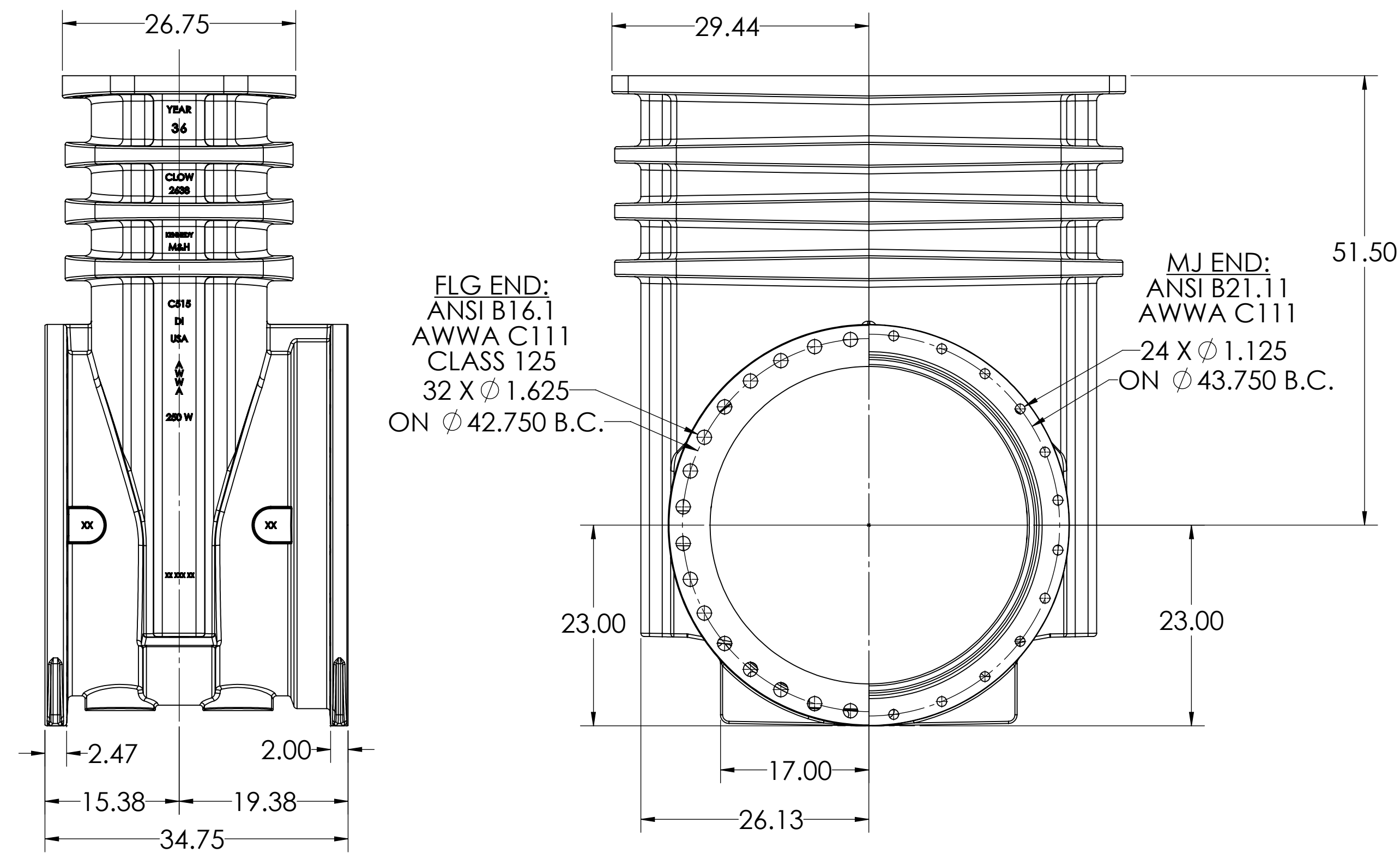
36" C515 FLG X FLG



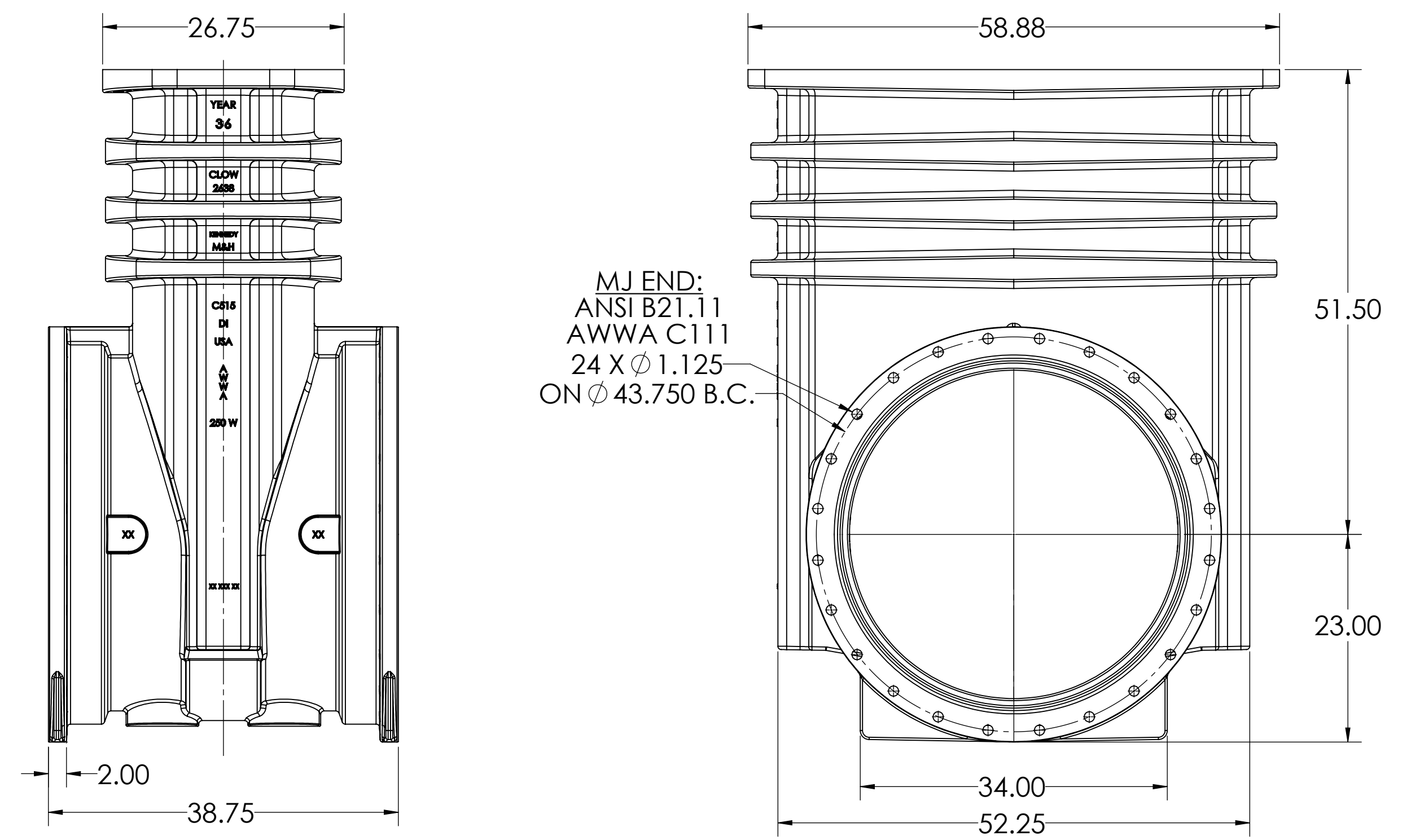
36" C515 250# FLG X FLG



36" C515 FLG X MJ

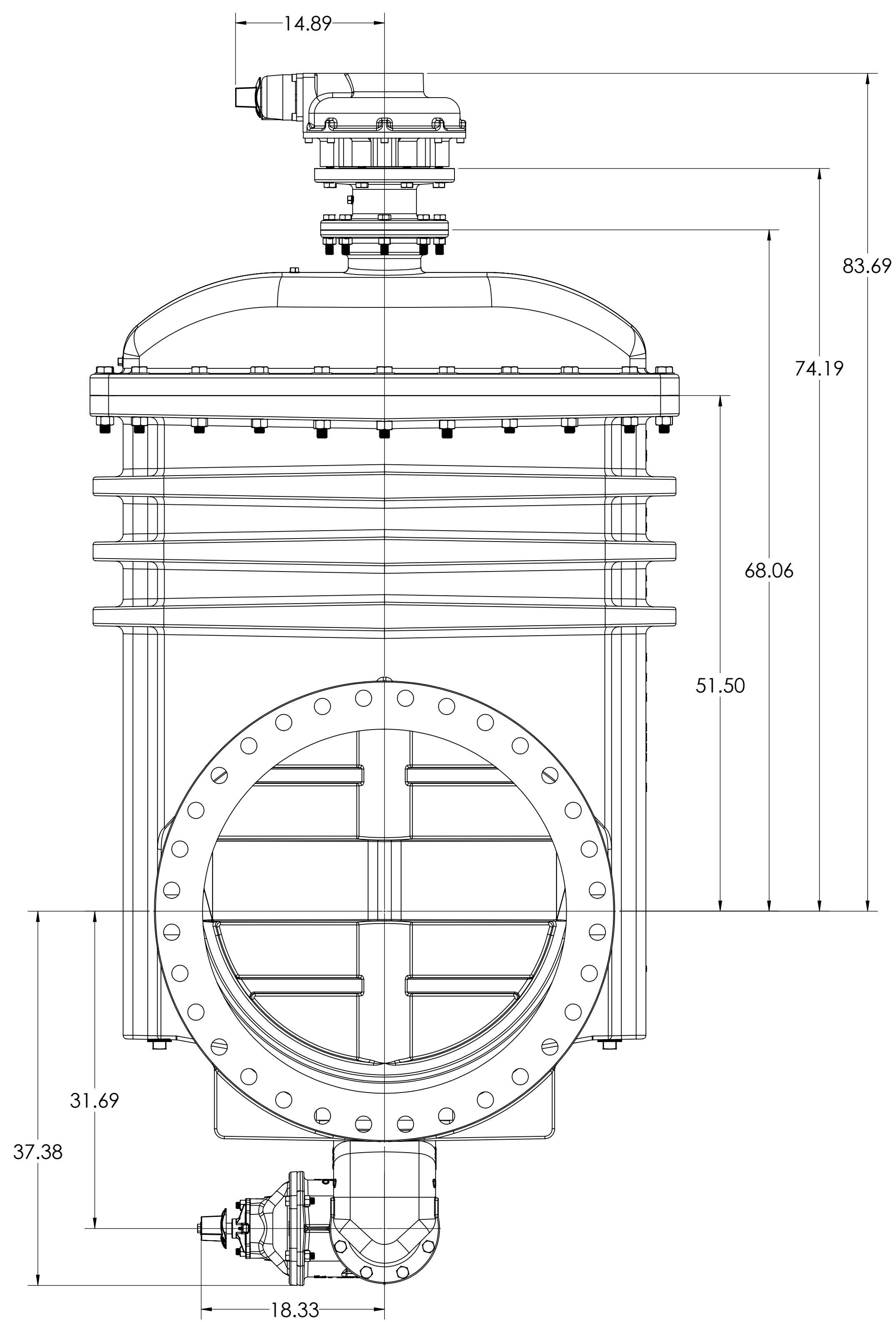


36" C515 MJ X MJ

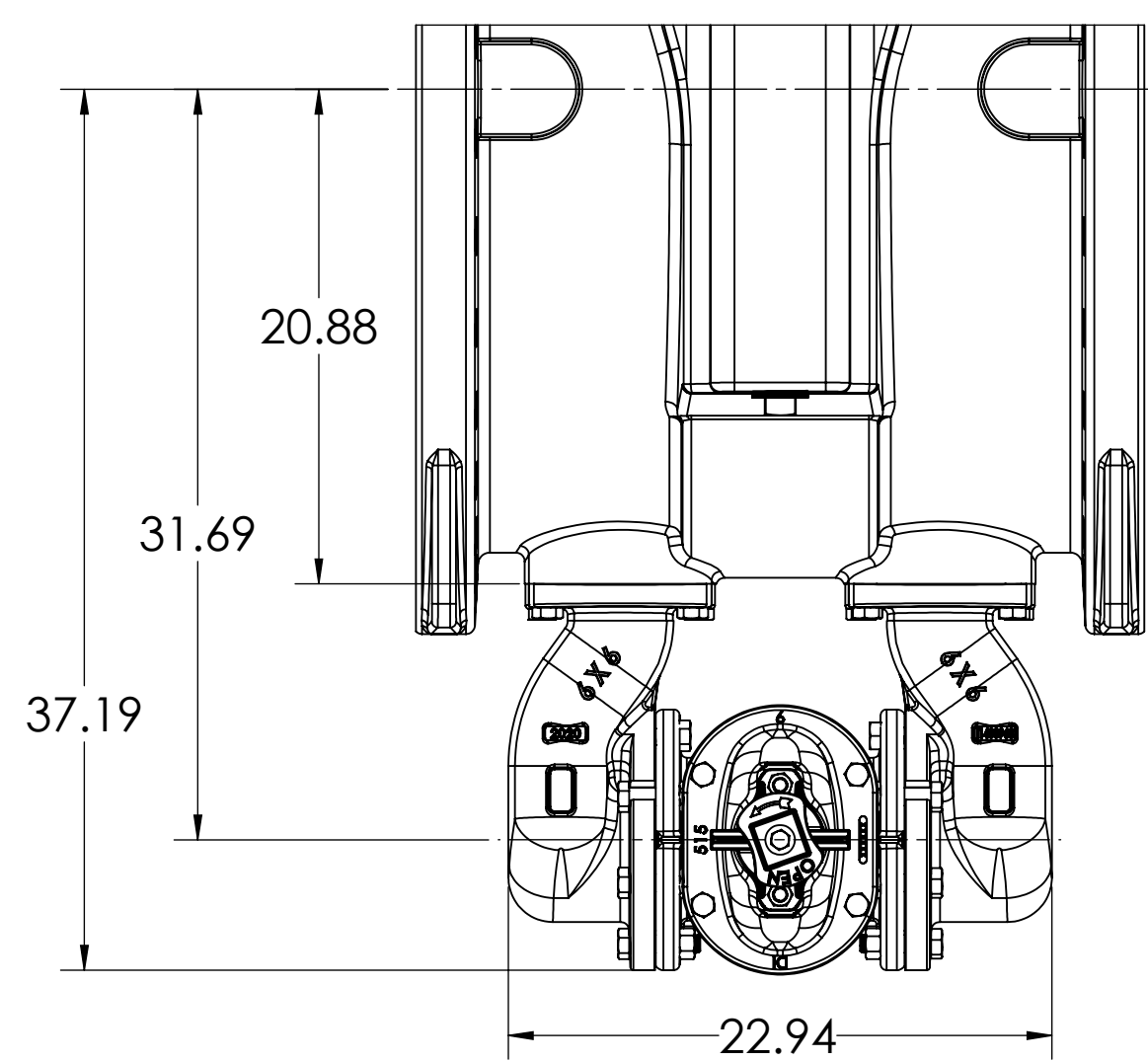


THIRD ANGLE PROJECTION STANDARDS: ANSI/ASME Y14.100, Y14.1 AND Y14.41 TOLERANCES AS FOLLOWS UNLESS OTHERWISE SPECIFIED.		PROPERTY OF MCWANE CORPORATION. ALL DIMENSIONS AND IDENTIFYING INFORMATION ARE PROPRIETARY TO MCWANE CORPORATION AND ITS SUBSIDIARIES. REPRODUCTION OR USE WITHOUT THE WRITTEN PERMISSION OF MCWANE CORPORATION IS STRICTLY PROHIBITED. ALL RIGHTS RESERVED.		REV. NO.	DESCRIPTION
CASTING TOLERANCES:		MACHINED DIMENSIONS:		REV. NO.	DESCRIPTION
6.4":	± 1/32"	DECIMALS:	± 0.005	1	B
4.8":	± 3/64"	FRACTIONS:	± 1/64"		
8.12":	± 1/16"	ANGLE:	± 1°		
13.18":	± 3/32"	SURFACE FINISH:	125 µin		
18.14":	± 1/8"	RADIUS:	1/8"		
MIN RADIUS:	1/8"				
MIN DRAFT:	2°				
DRAWN BY: BLS		DATE DRAWN: 10/30/2020		CHECKED BY: [ ]	
MATERIAL: Ductile Iron		ESTIMATED WEIGHT: [ ] LBS.		DESCRIPTION: 36" NRS RESILIENT WEDGE GATE VALVE	
SCALE: 1:12		SHEET NO: 6		SHEET OF: 6	
SOFTWARE: Solidworks 2018 SP2		REV. NO: 1		REV. DESCRIPTION: [ ]	

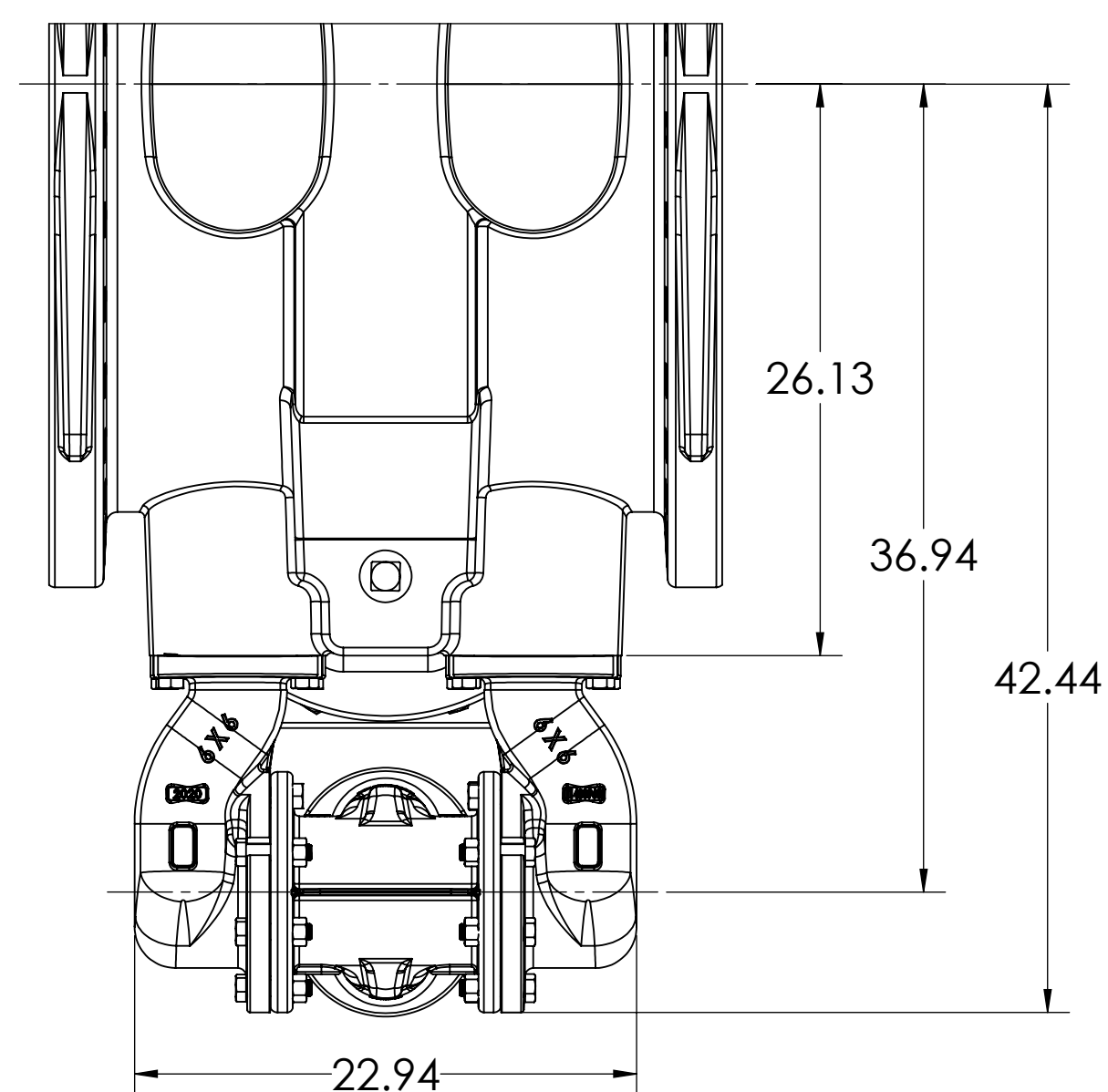
# BEVEL GEAR WITH OPTIONAL BOTTOM BYPASS



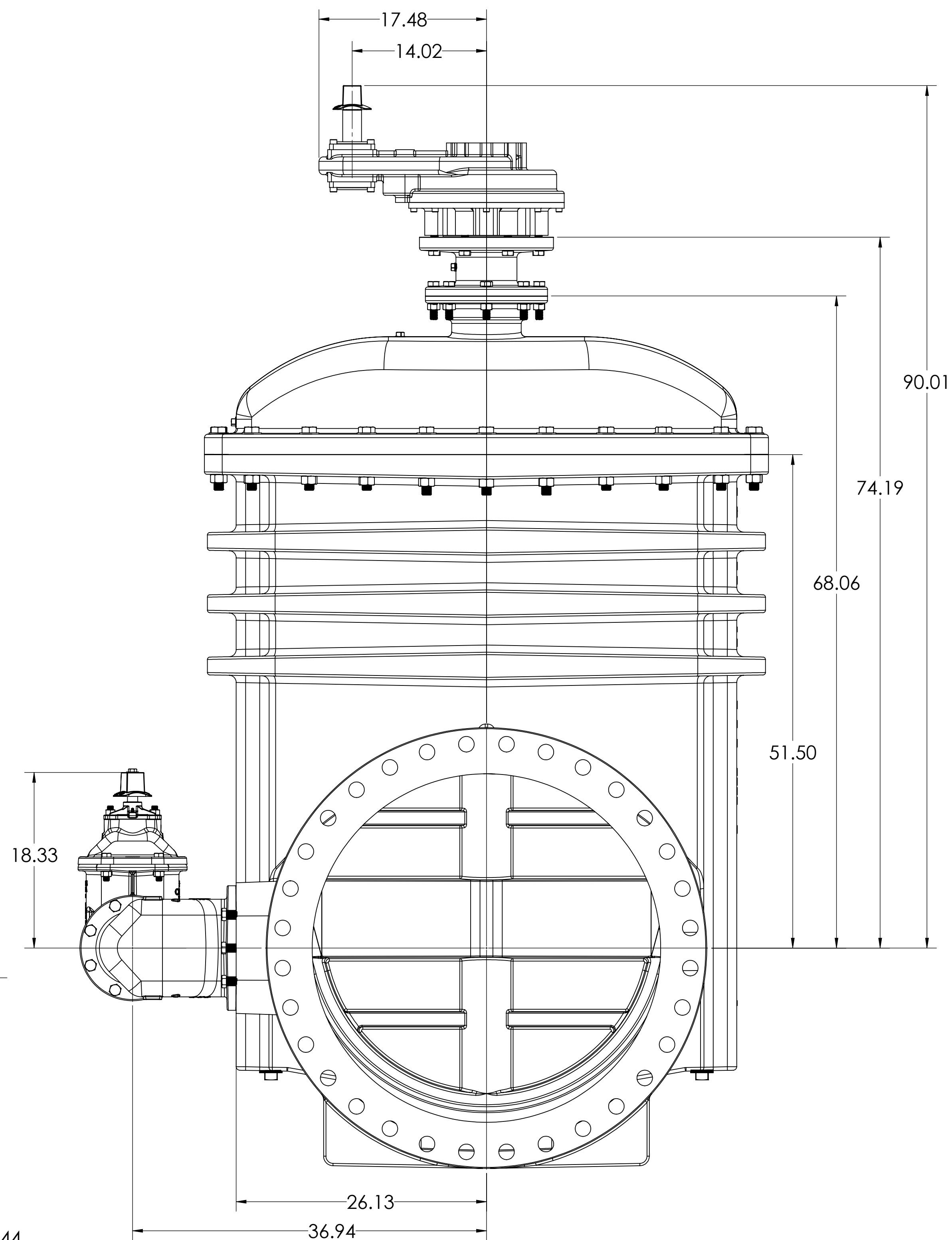
## BOTTOM BYPASS



## SIDE BYPASS



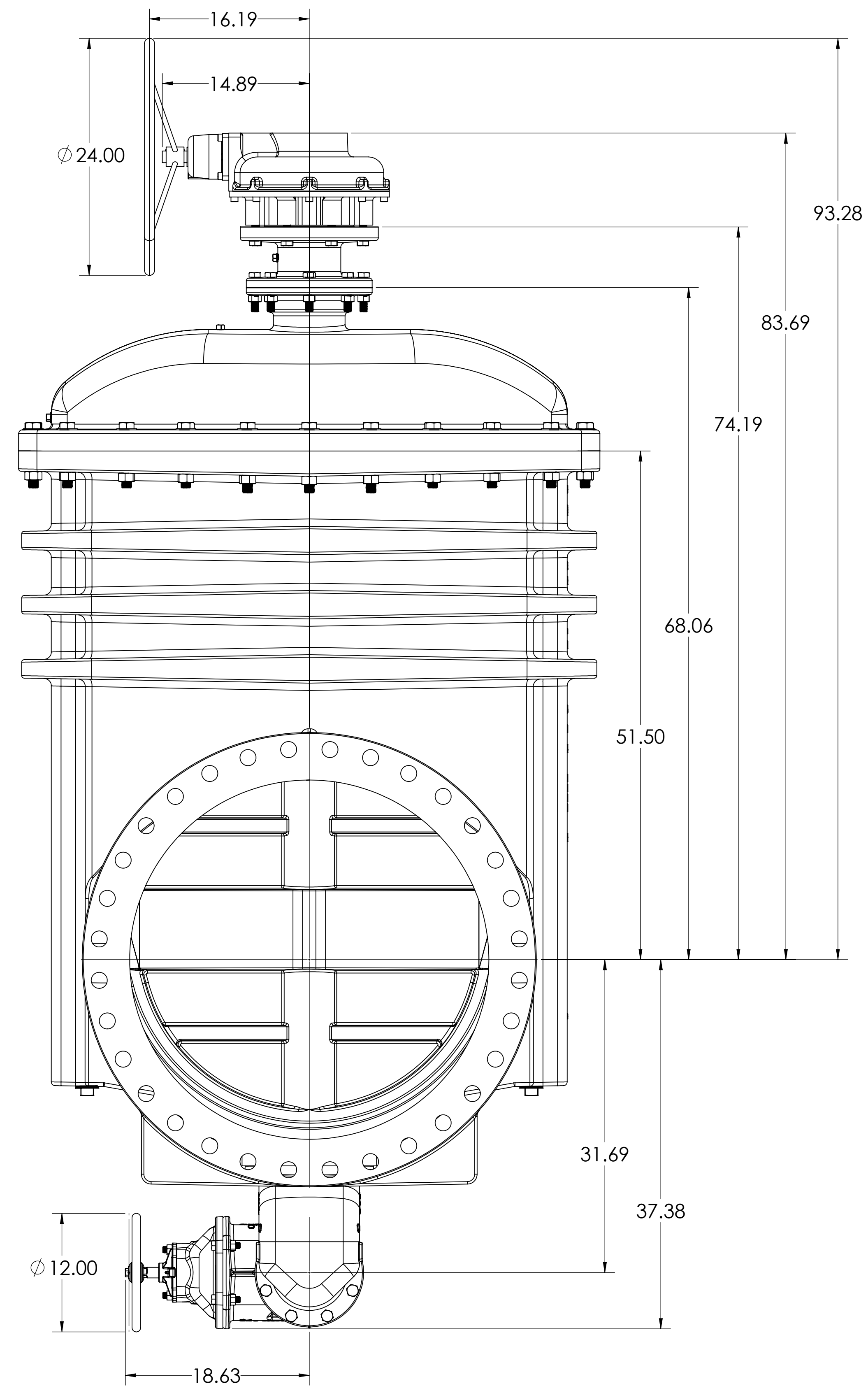
# SPUR GEAR WITH OPTIONAL SIDE BYPASS



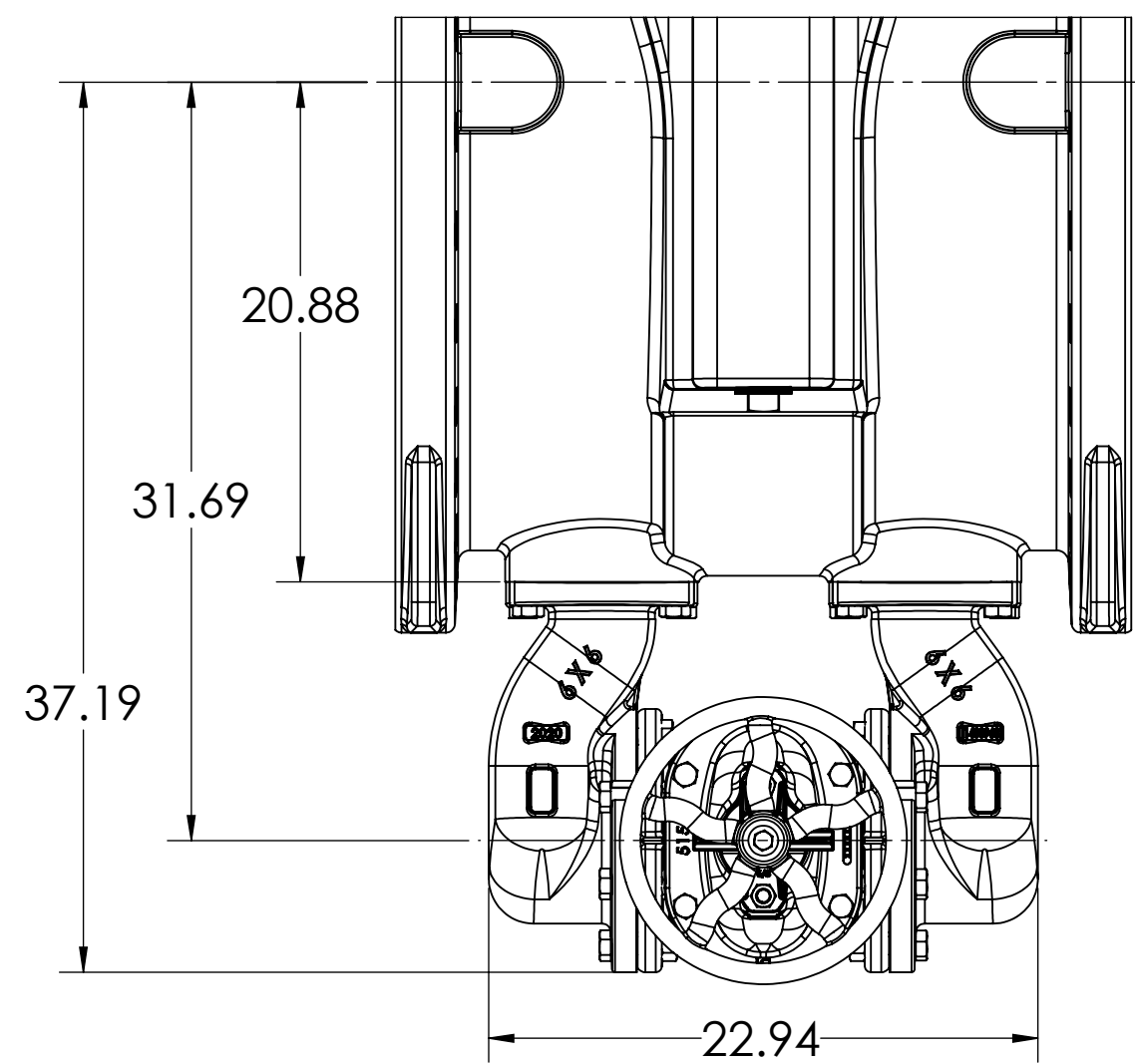
NOTE: GEAR CAN BE ROTATED IN 45° INCREMENTS FOR SPECIAL APPLICATIONS

THIRD ANGLE PROJECTION STANDARDS: ANSI/ASME Y14.1, Y14.2, AND Y14.4 TOLERANCES AS FOLLOWS UNLESS OTHERWISE SPECIFIED.		PROPERTY OF MCWANE CORPORATION. ALL DIMENSIONS AND IDENTIFYING INFORMATION ARE PROPRIETARY TO MCWANE CORPORATION AND ITS SUBSIDIARIES. REPRODUCTION OR USE WITHOUT PERMISSION IS PROHIBITED. ALL RIGHTS RESERVED.		REV. NO.	DESCRIPTION
CASTING TOLERANCES		MACHINED DIMENSIONS		REV. NO.	DESCRIPTION
0.4":	± 0.005	DECIMALS:	± 0.005	1	B
0.8":	± 0.004	FRACTIONS:	± 0.004		
1.0":	± 0.003	ANGLES:	± 1°		
1.5":	± 0.002	SURFACE FINISH:	100 μin		
2.0":	± 0.002	RADIUS:	1/8"		
MIN RADIUS:	1/8"				
MIN DRILL:	3/16"				
Ductile Iron		ESTIMATED WEIGHT		36" NRS RESILIENT WEDGE GATE VALVE	
LBS.		LBS.		2	
DESIGNED BY	DATE DRAWN	CHECKED BY	CHECK DATE	SCALE	SHEET NO.
BLS	10/30/2020			1:8	6
				REVISED BY	Solidworks 2018 SP2

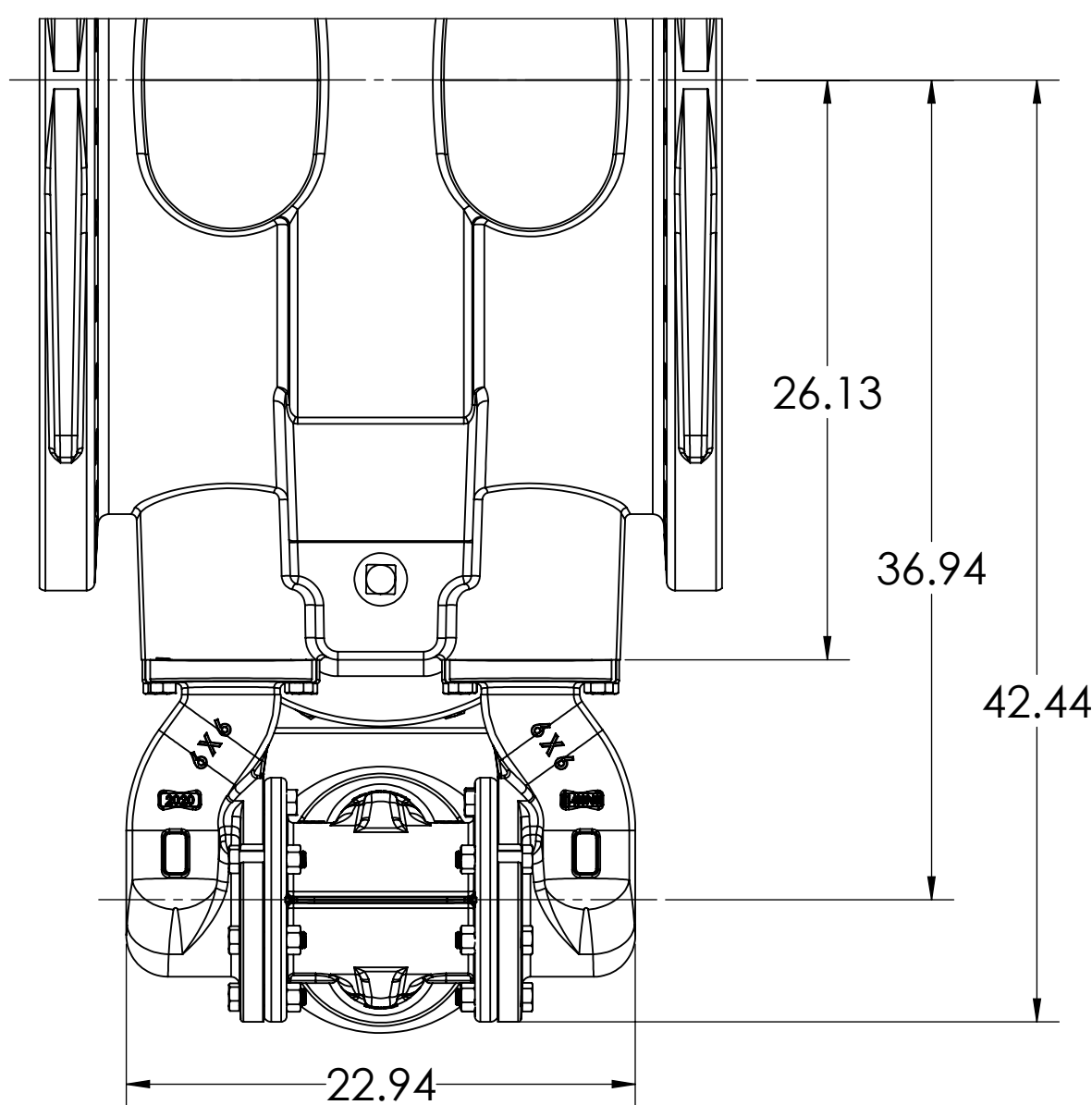
# BEVEL GEAR WITH OPTIONAL BOTTOM BYPASS



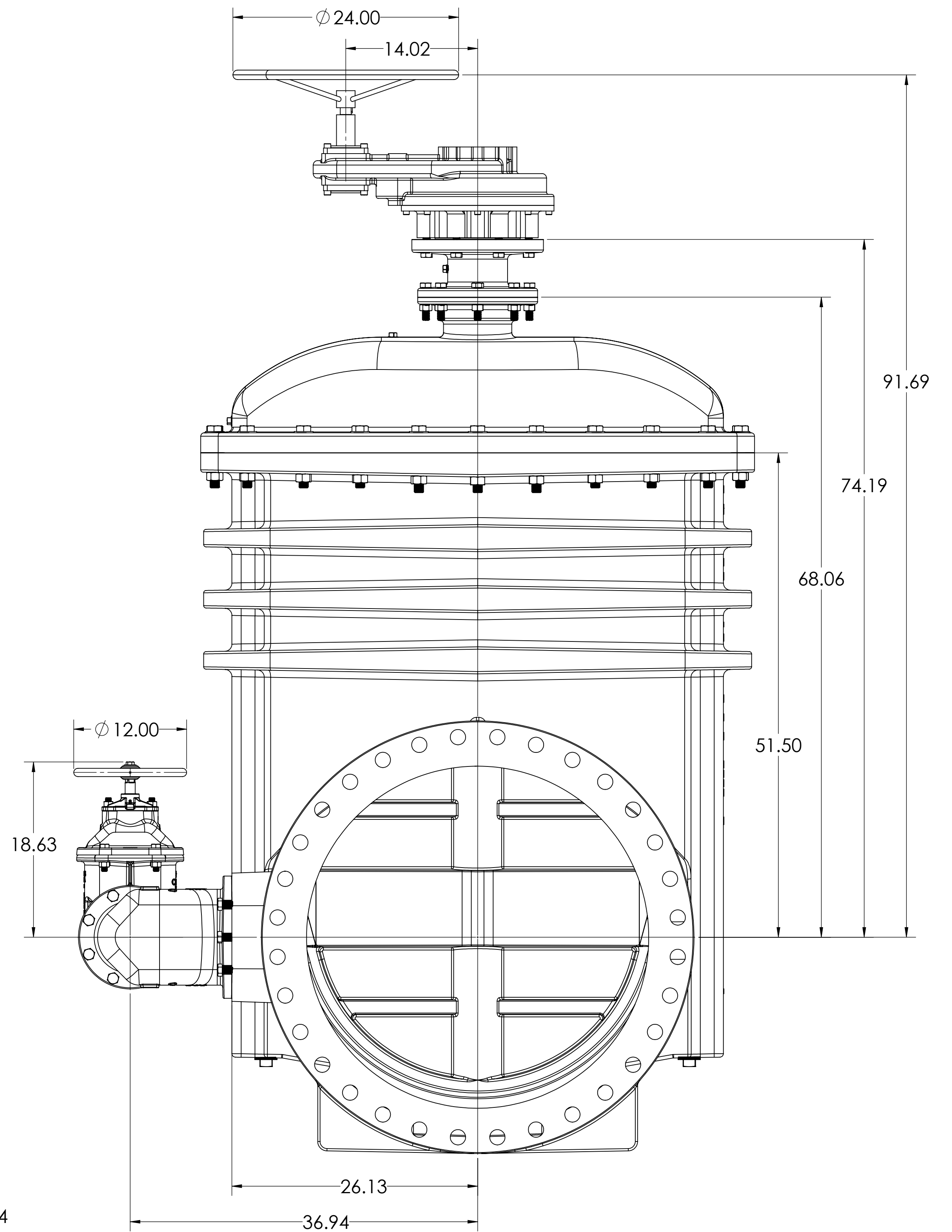
## BOTTOM BYPASS



## SIDE BYPASS



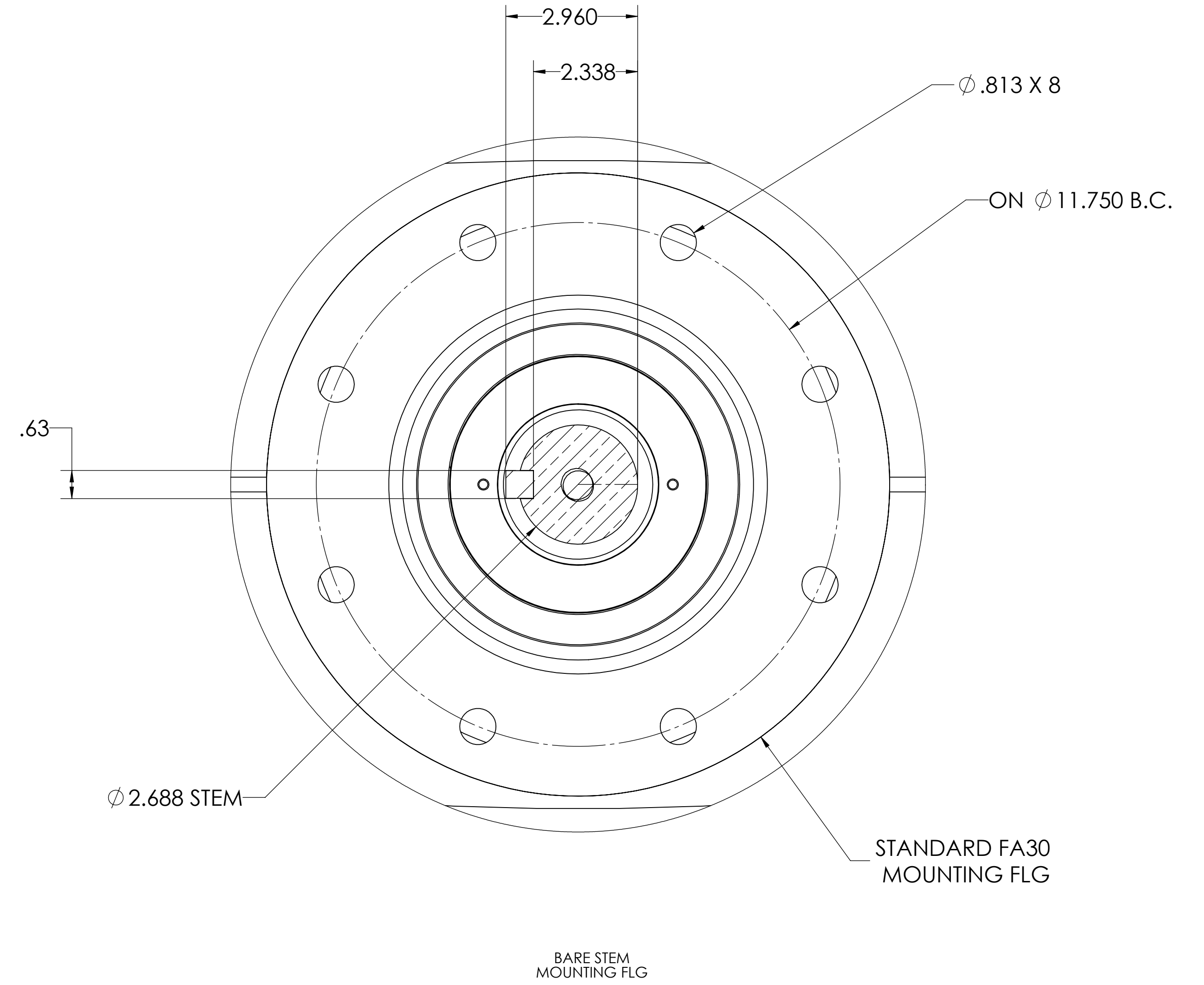
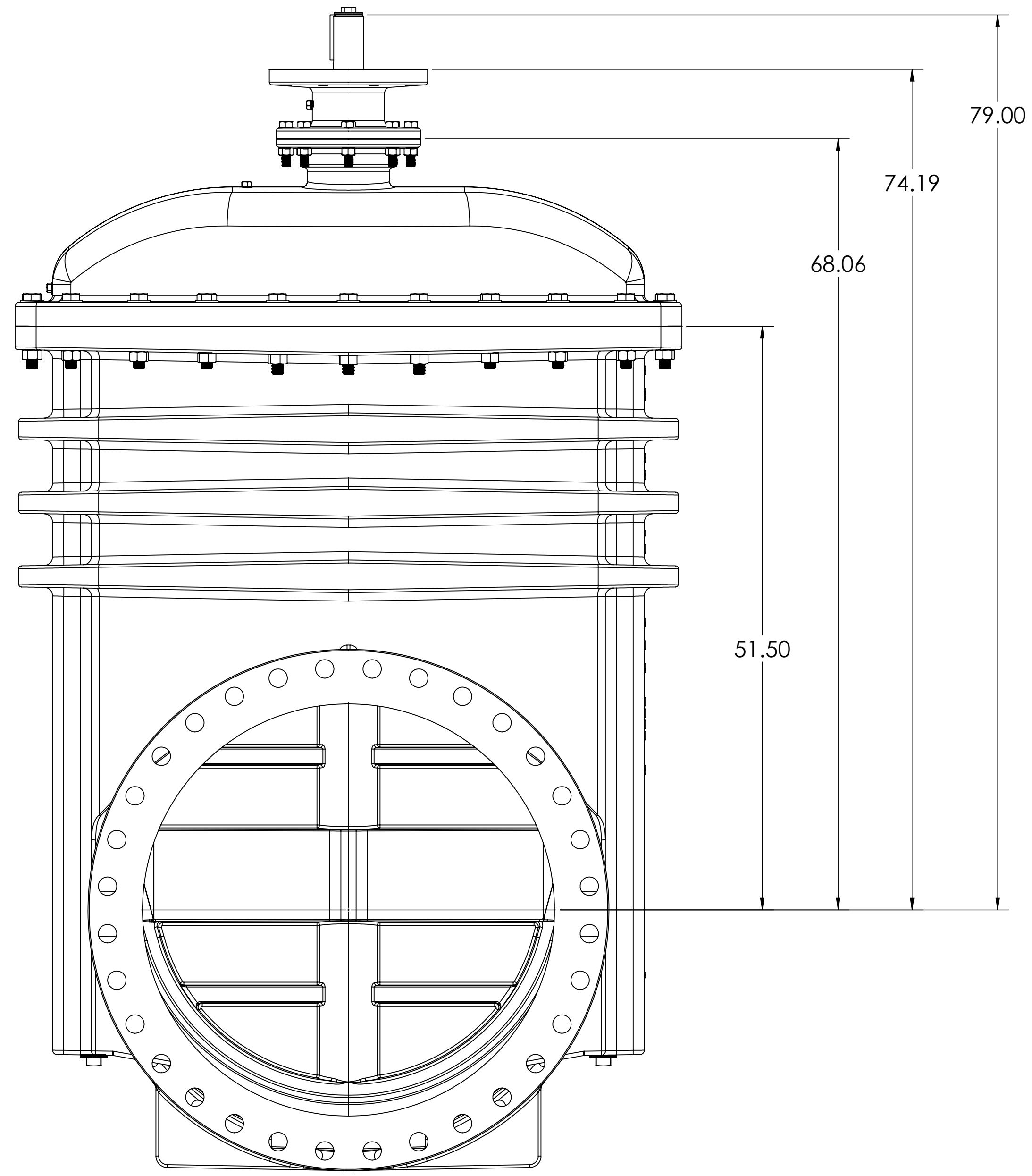
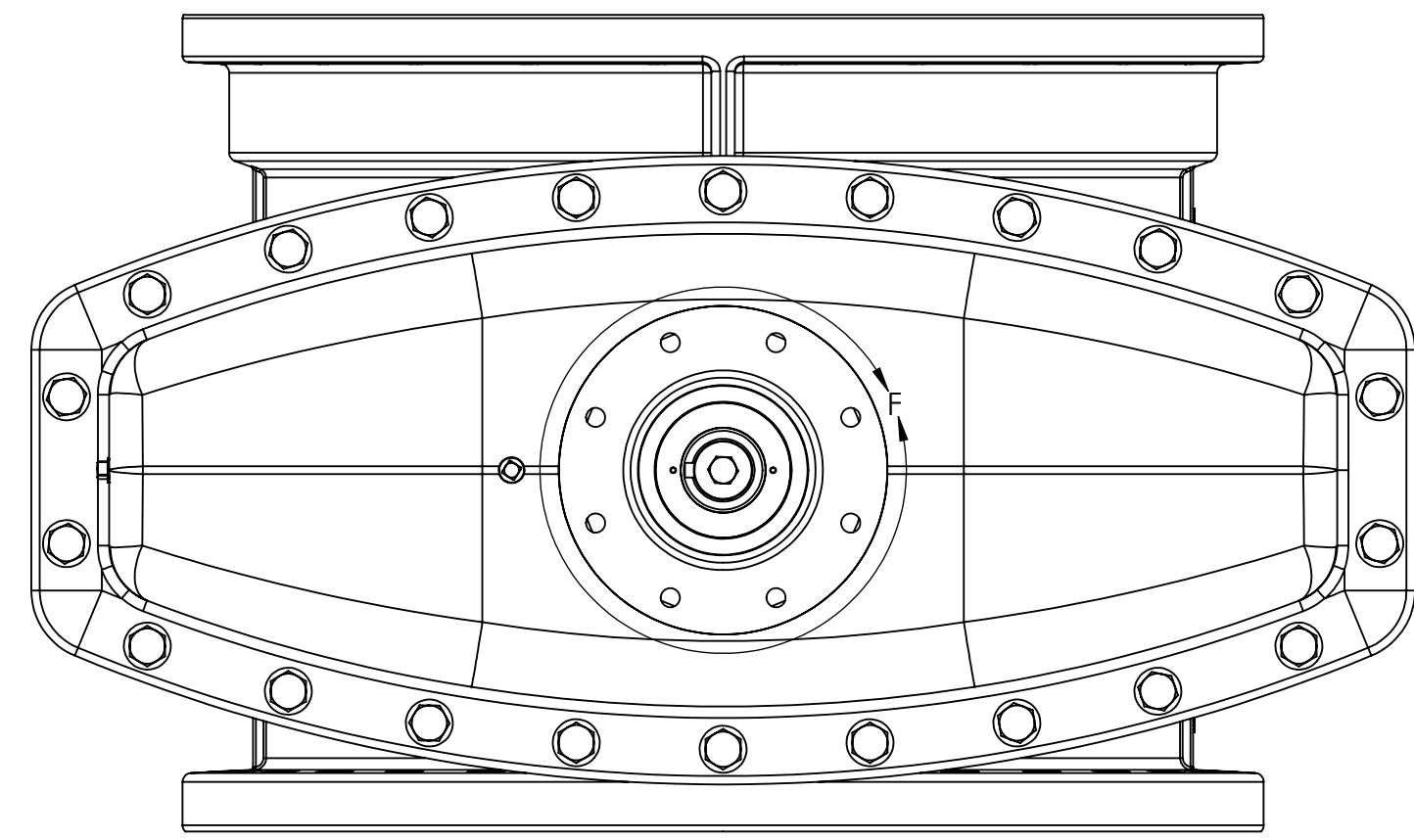
# SPUR GEAR WITH OPTIONAL SIDE BYPASS



NOTE: GEAR CAN BE ROTATED IN 45° INCREMENTS FOR SPECIAL APPLICATIONS

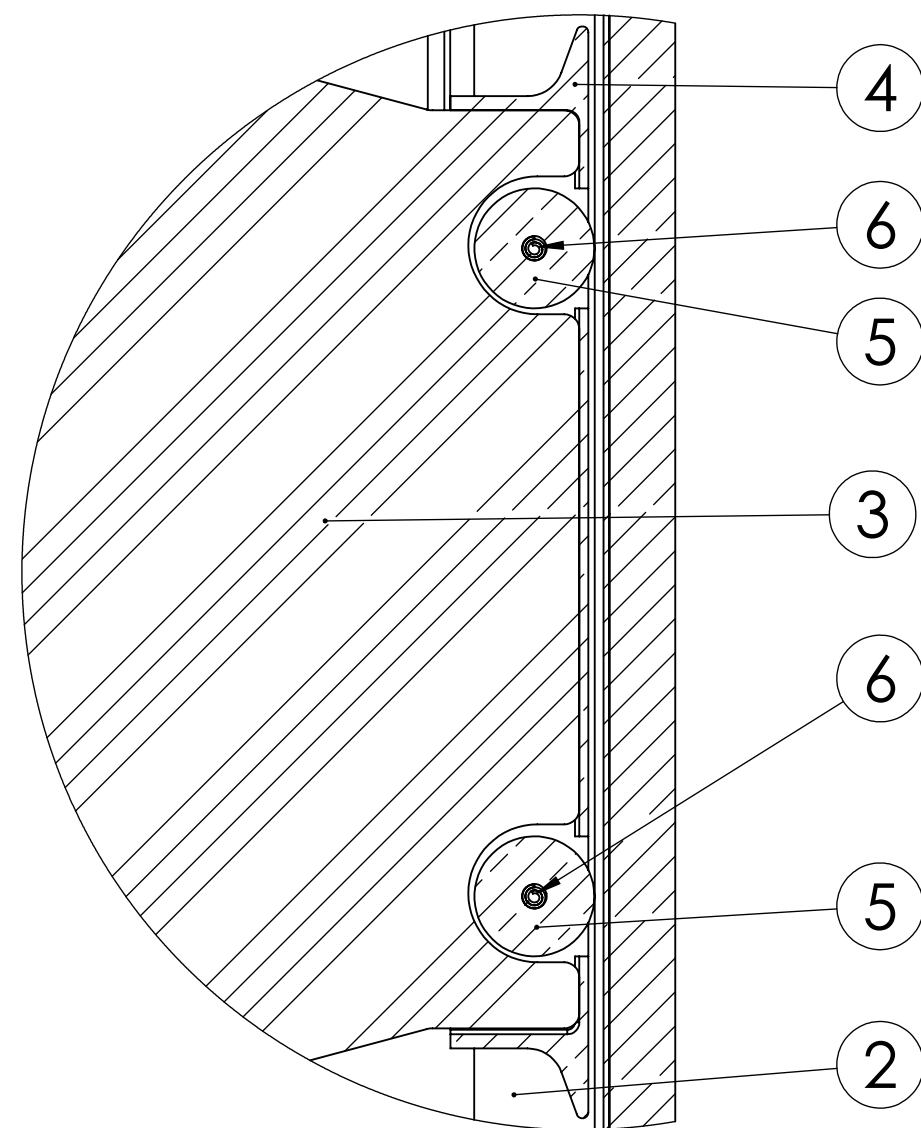
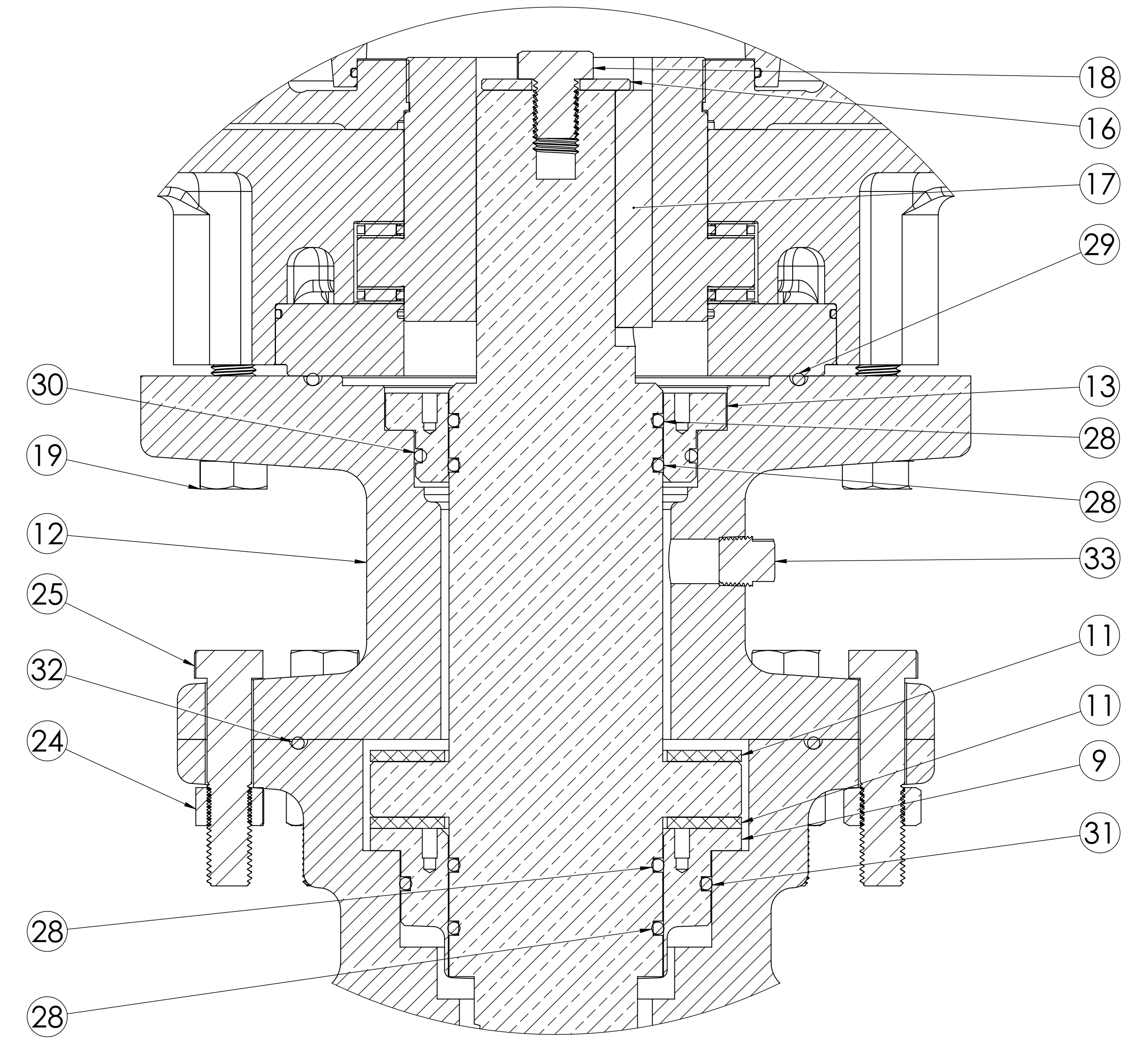
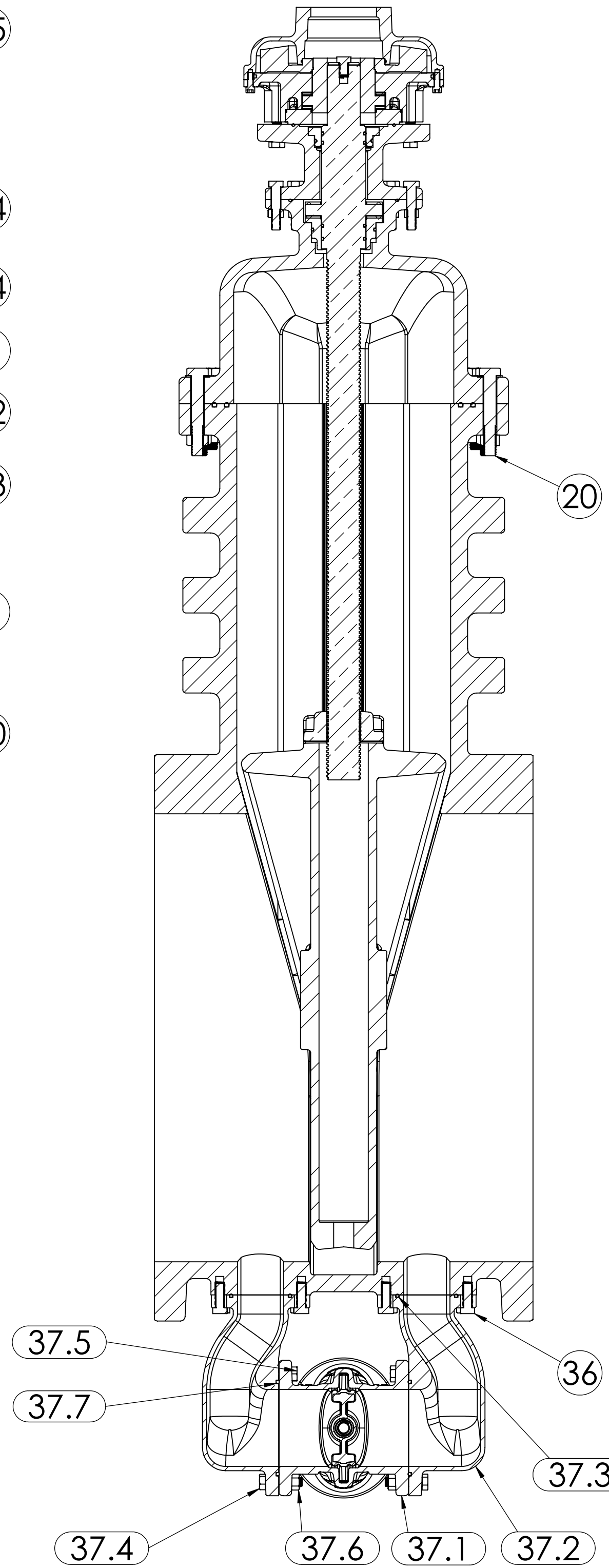
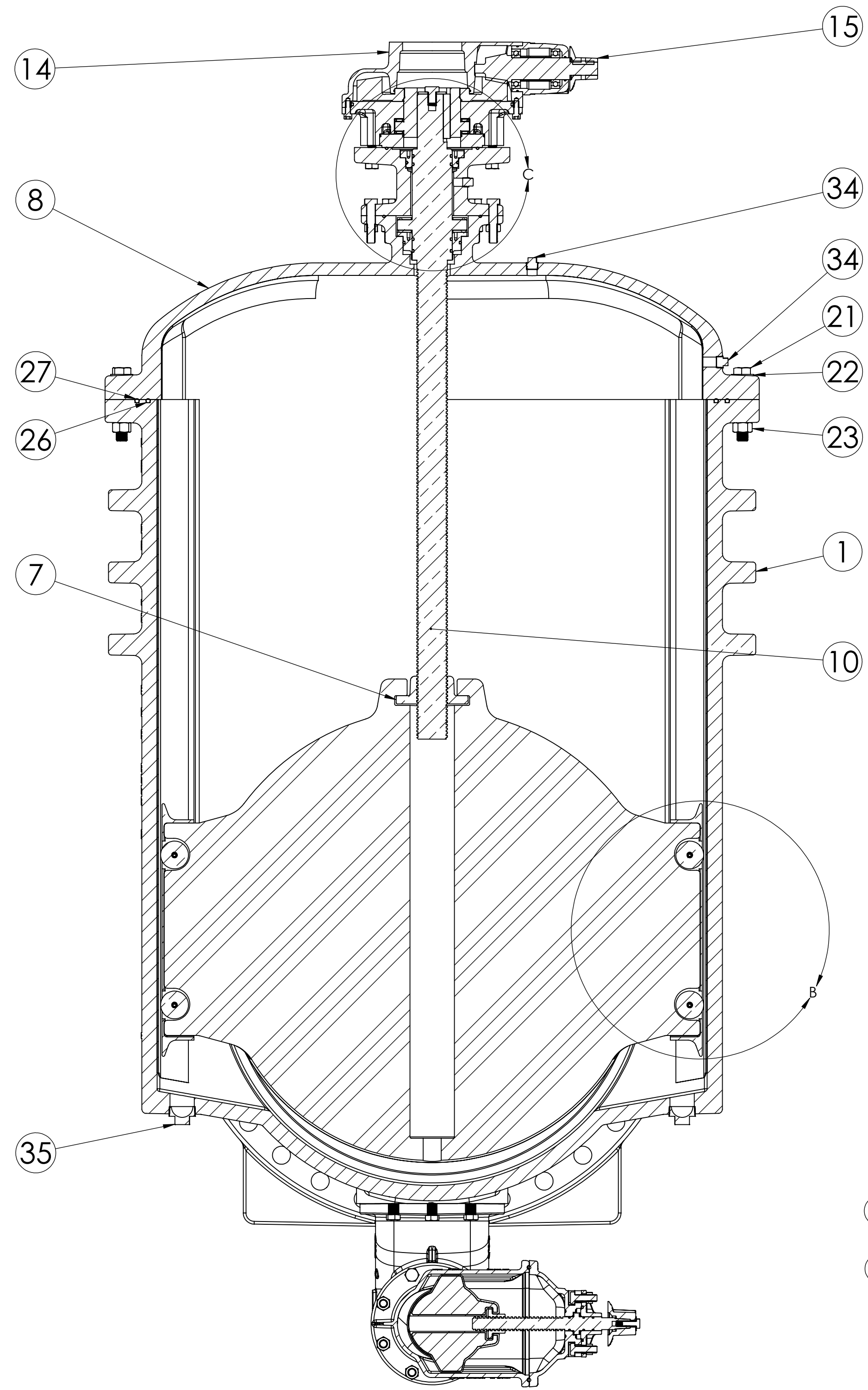
THIRD ANGLE PROJECTION STANDARDS: ANSI/ASME Y14.1, Y14.2, AND Y14.41 TOLERANCES AS FOLLOWS UNLESS OTHERWISE SPECIFIED.		PROPERTY OF MCWANE CORPORATION. ALL MODELS AND IDENTIFI- CATION ARE PROPRIETARY TO MCWANE CORPORATION AND ITS SUBSIDIARIES. REPRODUCTION OR USE WITHOUT THE WRITTEN PERMISSION OF MCWANE CORPORATION IS PROHIBITED. ALL RIGHTS RESERVED.		REV. NO.	DESCRIPTION
CASTING TOLERANCES		MATCHED DIMENSIONS		REV. NO.	DESCRIPTION
0.4":	± 0.005	DECIMALS:	± 0.005	1	36" NRS RESILIENT WEDGE GATE VALVE
0.5":	± 0.004	FRACTIONS:	± 0.004	2	
0.625":	± 0.003	ANGLES:	± 1°	3	
1.000":	± 0.002	SURFACE FINISH:	125 μin	4	
1.500":	± 0.001	RADIUS:	1/8"	5	
MIN RADIUS:	1/8"			6	
MIN DRAWT:	2°				
DESIGNED BY:	DATE DRAWN:	DRAWN BY:	CHECKED BY:	SCALE:	REVISED BY:
BLS	10/30/2020			1:8	
ESTIMATED WEIGHT:		LBS.		SHEET NO.	
				3	
				6	

CLW VALVE CO.  
3 SHEET OF 6  
D



THIRD ANGLE PROJECTION STANDARDS: ANSI/ASME Y14.100, Y14.1, AND Y14.41 TOLERANCES AS FOLLOWS UNLESS OTHERWISE SPECIFIED.		PROPERTY OF MCWANE CORPORATION. ALL DIMENSIONS AND IDENTIFIED DIMENSIONS ARE PROPRIETARY TO MCWANE CORPORATION AND ITS SUBSIDIARIES. REPRODUCTION OR USE WITHOUT PERMISSION IS PROHIBITED UNLESS OTHERWISE ARRANGED. ALL RIGHTS RESERVED.		DATE: 10/30/2020	DRAWN BY: BLS
CASTING TOLERANCES: 0.4": ± 1/32" 0.8": ± 3/64" 1.2": ± 1/16" 1.6": ± 3/32" 18.0": ± 1/8" MIN. RADIUS: 1/8" MIN. DRAFT: 2°		MACHINED DIMENSIONS: DECIMALS: ± 0.005 FRACTIONS: ± 1/64" ANGLE: ± 1° SURFACE FINISH: 125 μin RAD: 1/8"		ESTIMATED WEIGHT: LBS.	DESCRIPTION: 36" NRS RESILIENT WEDGE GATE VALVE
MATERIAL: Ductile Iron		FINISH: STANDARD		SCALE: 1:8	SHEET OF: 6
DATE: 10/30/2020		CHECKED BY: [Blank]		APPROVED BY: [Blank]	SOFTWARE: Solidworks 2018 SP2

CLW VALVE CO.  
4 SHEET OF 6  
D



STANDARDS: ANSI/ASME B16.10, B16.11, AND B16.41 TOLERANCES: AS FOLLOWS UNLESS OTHERWISE SPECIFIED.		PROPERTY OF MCWANE CORPORATION. ALL DIMENSIONS AND IDENTIFICATION ARE PROPRIETARY TO MCWANE CORPORATION AND ITS SUBSIDIARIES. REPRODUCTION OR TRANSMISSION OF THIS DOCUMENT WITHOUT THE WRITTEN PERMISSION OF MCWANE CORPORATION IS PROHIBITED. ALL RIGHTS RESERVED.		DESCRIPTION:
CASTING TOLERANCES:		FINISHED DIMENSIONS:		ESTIMATED WEIGHT:
0.4":	± 0.002	DECIMALS:	± 0.005	36" NRS RESILIENT WEDGE GATE
0.8":	± 0.004	FRACTIONS:	± 0.004	LBS. VALVE
1.2":	± 0.006	ANGLE:	± 1/16"	
1.8":	± 0.008	SURFACE FINISH:	125 μin	
MIN RADIUS:	1/8"	RADIUS:	1/8"	
MIN DRAFT:	2°			
DESIGNED BY:	DATE DRAWN:	CHECKED BY:	CHECK DATE:	SCALE:
BLS	10/30/2020			1:8
				SOLIDWORKS: Solidworks 2018 SP2

ITEM NO.	COMPONENT	QTY.	SIZE	STANDARD MATERIAL	MATERIAL OPTIONS
1	BODY	1		DUCTILE IRON	
2	TRACK	2		316 SS	
3	WEDGE	1		EPDM/DUCTILE IRON	
4	SCRAPER	2		C95500	
5	ROLLER	4		C95400	
6	COILED SPRING PIN	4	1/2" X 2-3/4"	18-8 SS	
7	STEM NUT	1		C87850	C87610 (LOW ZINC)
8	COVER	1		DUCTILE IRON	
9	COVER BUSHING	1		C87850	
10	STEM	1		C86200	C99500 (LOW ZINC), 304 SS, 316 SS
11	THRUST BEARING	2		NYLATRON	
12	EXTENSION	1		DUCTILE IRON	
13	STEM GUIDE BUSHING	1		C87850	
14	GEAR	1		BEVEL GEAR	SPUR GEAR
15	OPERATING NUT	1		DUCTILE IRON	**24" DIA HANDWHEEL**
16	KEY KEEPER	1		C95400	
17	KEY	1	5/8" X 5/8" X 4"	18-8 SS	
18	CAPSCREW	1	3/4" - 10 X 1"	18-8 SS	316 SS
19	CAPSCREW	8	3/4" - 10 X 2-1/4"	18-8 SS	316 SS
20	CAPSCREW	6	1" - 8 X 6-1/2"	18-8 SS	316 SS
21	CAPSCREW	16	1" - 8 X 6"	18-8 SS	316 SS
22	FLAT WASHER	22	1"	18-8 SS	
23	HEX NUT	22	1" - 8	18-8 SS	316 SS
24	HEX NUT	8	3/4" - 10	18-8 SS	316 SS
25	CAPSCREW	8	3/4" - 10 X 3-1/2"	18-8 SS	316 SS
26	O-RING	1	0.375" X 37.250"	EPDM	BUNA-N
27	O-RING	1	0.375" X 39.250"	EPDM	BUNA-N
28	O-RING	4	#339	EPDM	BUNA-N
29	O-RING	1	#369	EPDM	BUNA-N
30	O-RING	1	#348	EPDM	BUNA-N
31	O-RING	1	#352	EPDM	BUNA-N
32	O-RING	1	#371	EPDM	BUNA-N
33	PLUG	1	1/2" NPT	316 SS	
34	PLUG	2	3/4" NPT	316 SS	
35	PLUG	2	2" NPT	316 SS	
36	CAPSCREW	12	3/4" - 10 X 2"	18-8 SS	316 SS
37	6IN RS BYPASS ASSEMBLY	1			
37.1	06" C515 NRS VALVE ASSEMBLY	1			**12" DIA HANDWHEEL**
37.2	BYPASS ELBOW	2		DUCTILE IRON	
37.3	O-RING	2	#445	EPDM	BUNA-N
37.4	CAPSCREW	12	3/4" - 10 X 3"	18-8 SS	316 SS
37.5	CAPSCREW	4	3/4" - 10 X 1-3/4"	18-8 SS	316 SS
37.6	HEX NUT	12	3/4" - 10	18-8 SS	316 SS
37.7	O-RING	2	#442	EPDM	BUNA-N

- VALVES CONFORM WITH FOLLOWING STANDARDS  
- AWWA C515  
- NSF 61

- LOW ZINC BRASS STEM AND STEM NUT AVAILABLE

- OPEN LEFT (COUNTERCLOCKWISE) AND OPEN RIGHT (CLOCKWISE) OPTIONS AVAILABLE

- TURNS TO OPEN FROM FULLY CLOSED: 684  
- +/-5% WITH STANDARD 6:1 BEVEL OR SPUR GEAR

- AWWA MAXIMUM ALLOWABLE CLOSING TORQUE 250 FT-LBS WITH STANDARD GEARING.

- OPTIONAL HANDWHEEL CAN BE SUBSTITUTED FOR STANDARD 2" SQUARE OP NUT  
\*\*NOTE: STANDARD HANDWHEEL SIZE IN PARTS LIST\*\*

- OPTIONAL 6" BYPASS VALVE  
-TURNS TO OPEN: 20 (±5%)  
-MAX ALLOWABLE CLOSING TORQUE: 110 FT-LB

- BOTH BOTTOM BYPASS AND SIDE BYPASS ASSEMBLIES USE THE SAME COMPONENTS

**\*\*NOTE: LINE ITEMS 36-37 ARE ONLY INCLUDED IN VALVE WITH BOTTOM BYPASS OR SIDE BYPASS OPTIONS.\*\***