

F800 SERIES FIRE HYDRANTS

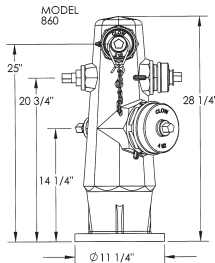
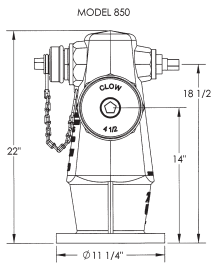
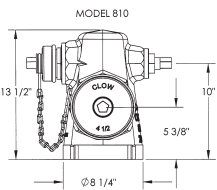
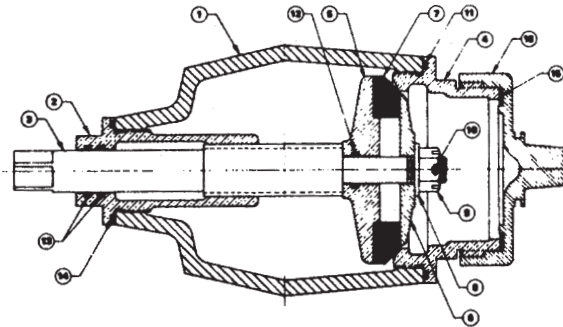
CLOW VALVE COMPANY

Features:

- Meets or Exceeds AWWA C503
- High Strength Cast Iron Body
- Interior Ferrous Surfaces Epoxy Lined
- Improved Stem and Carrier Assembly
- Removable Bronze Outlets
- All Internal Working Parts Removable from Outlet Port
- Interchangeability of Steamer Connections
- Plastic Connections
- Low Cost
- Light Weight
- Streamlined Appearance

Model 850 and 860 are ULFM approved

ITEM NO.	PART	PART NO.			MATERIAL
		2 1/2	4	4 1/2	
1	BODY	-----			CAST IRON
2	STEM SLEEVE	3427			BRONZE
3	STEM	3425	3426		BRONZE
4	OUTLET	3407	3412	3414	BRONZE
5	CARRIER	3409	3415		BRONZE
6	RETAINER	3411	3416		NDZ
7	VALVE RUBBER	11-351	11-349		C.I. RUBBER
8	WASHER	67-152			BRASS
9	SLOTTED NUT	7102			BRONZE
10	COTTER PIN	85-149			STAINLESS STEEL
11	O-RING (OUTLET)	14-207	14-209		BUNA-N
12	O-RING (CARRIER)	14-182			BUNA-N
13	O-RING (STEM)	14-187			BUNA-N
14	O-RING (STEM SLEEVE)	14-205			BUNA-N
15	PRO CAP GASKET	11-420	11-421	11-422	C.I. RUBBER
		12-430	12-431	12-432	
16	PRO CAP	-----			CAST IRON PLASTIC



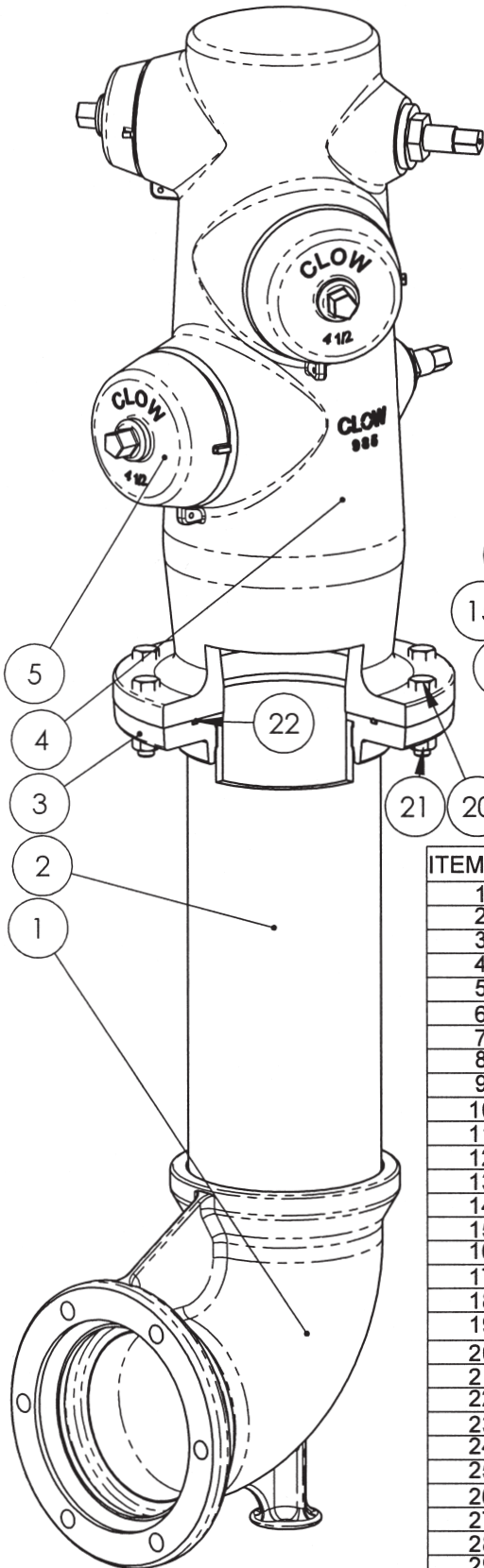
MODEL	WEIGHT	OUTLETS
810	70	(1)-2-1/2" (1)-4"-4-1/2"
845	105	(2)-2-1/2"
850	115	(1)-2-1/2" (1)-4"-4-1/2"
860	135	(2)-2-1/2" (1)-4"-4-1/2"

980 985-01
A 3/20/07

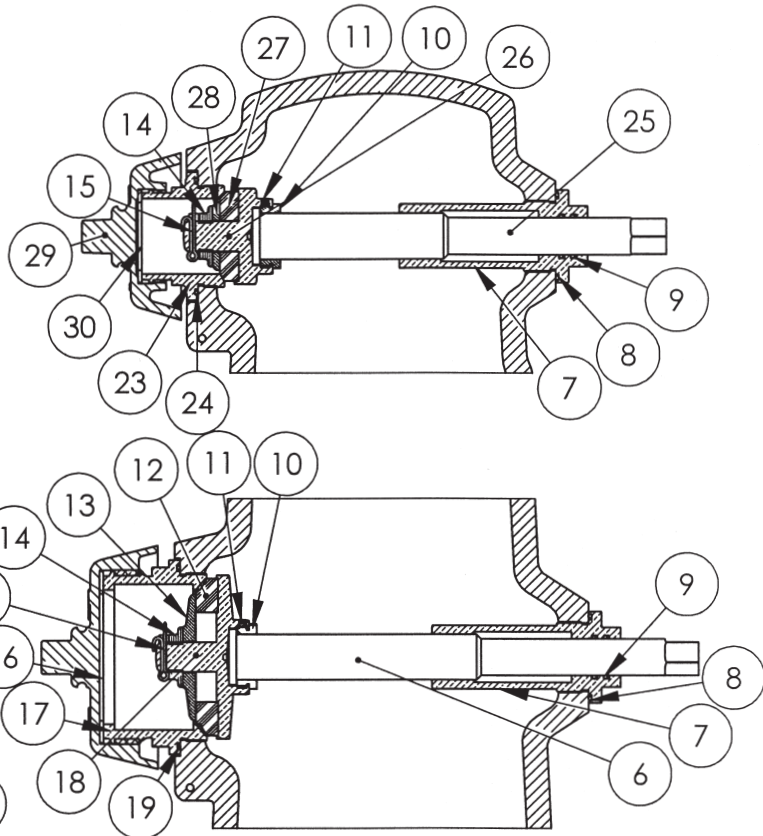
Model 980 is ULFM approved

985/980 WET BARREL HYDRANT
MJ BURY INLET SHOWN

CLOW VALVE COMPANY



985 HYDRANT SHOWN



ITEM NO.	DESCRIPTION	MATERIAL	985 QTY.	980 QTY.
1	MJ Bottom	Ductile Iron	1	1
2	8" Pipe	Ductile Iron	1	1
3	Bury Upper Flange	Ductile Iron	1	1
4	Hydrant Nozzle Section	Ductile Iron	1	1
5	Pumper Nozzle Cap	Gray Iron	2	1
6	Lower/Middle Nozzle Stem	Brass	2	2
7	Stem Sleeve	Bronze	3	3
8	O-Ring - Stem Sleeve	Rubber	3	3
9	O-Ring - Stem	Rubber	6	6
10	Stem Nut	Brass	3	3
11	Set Screw	Stainless Steel	3	3
12	Valve Rubber - 4 1/2"	Rubber	2	1
13	Retainer - 4 1/2"	Bronze	2	1
14	Slotted Nut	Brass	3	3
15	Cotter Pin	Brass	3	3
16	Cap Gasket - 4 1/2"	Rubber	2	1
17	Nozzle - 4 1/2"	Brass	2	1
18	Carrier - 4 1/2"	Bronze	2	1
19	O-Ring - 4 1/2" Nozzle	Rubber	2	1
20	3/4" Hex Head Bolt	Stainless Steel	8	8
21	3/4" Hex Nut	Stainless Steel	8	8
22	O-Ring - Bury Upper Flange	Rubber	1	1
23	Nozzle - 2 1/2"	Brass	1	2
24	O-Ring - 2 1/2" Nozzle	Rubber	1	2
25	Upper Nozzle Stem	Brass	1	1
26	Carrier - 2 1/2"	Bronze	1	2
27	Valve Rubber - 2 1/2"	Rubber	1	2
28	Retainer - 2 1/2"	Bronze	1	2
29	Hose Nozzle Cap	Gray Iron	1	2
30	Cap Gasket - 2 1/2"	Rubber	1	2

THIS HYDRANT DOES NOT HAVE A BREAK-OFF FEATURE AND MUST BE PROTECTED FROM ANY IMPACT

980 985-02
A 3/20/07

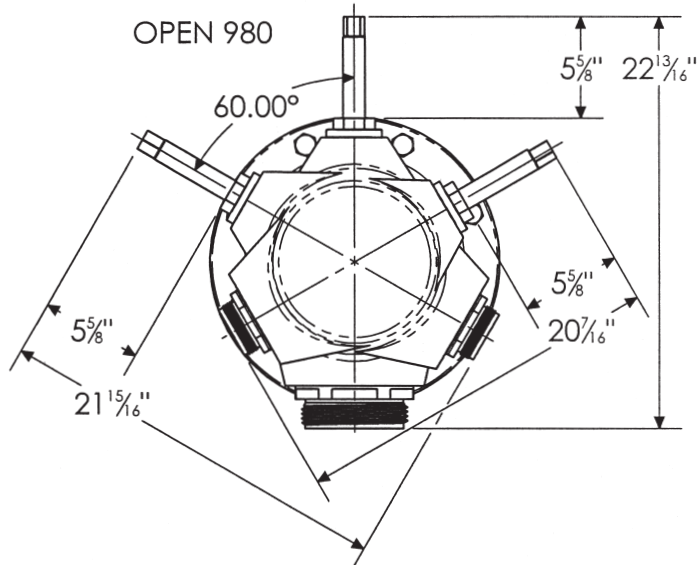
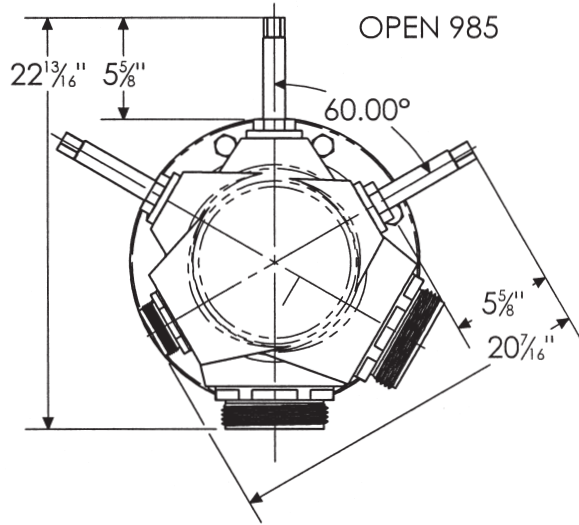
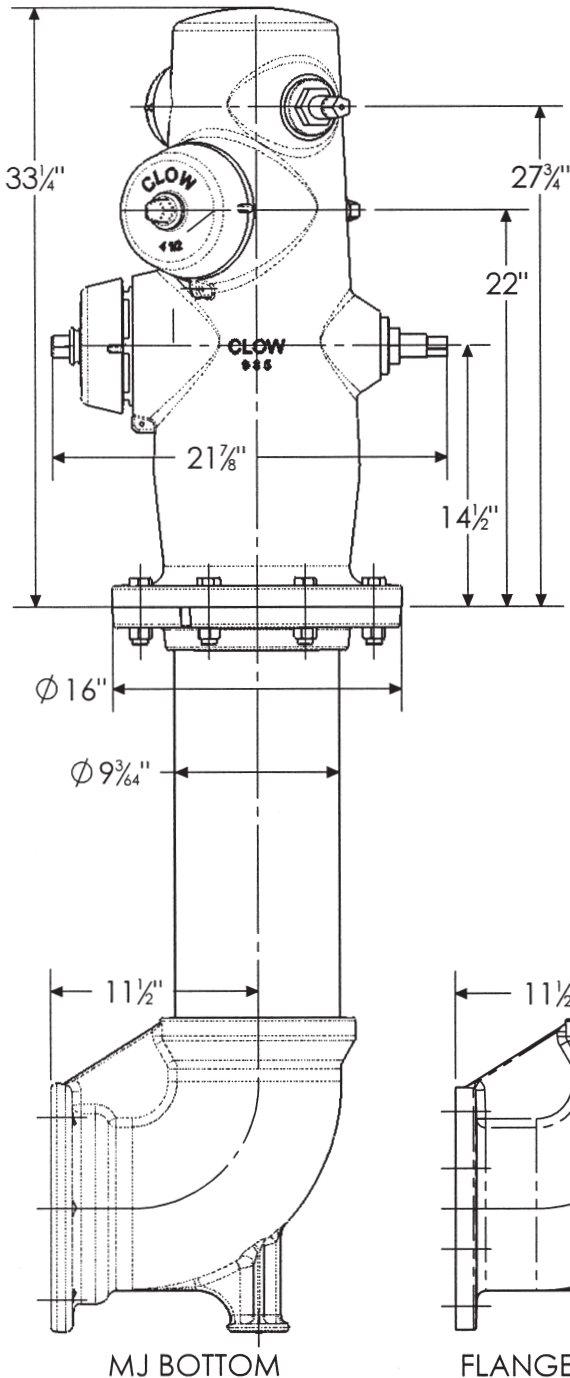
Model 980 is ULFM approved

**OVERALL HYDRANT WEIGHT:
(2' BURY DEPTH SHOWN ADD 37 LBS
FOR EACH ADDITIONAL FOOT OF BURY)**

CONFIGURATION	OVERALL WEIGHT
985 MJ BOTTOM	647 LBS
985 FLANGE BOTTOM	638 LBS
985 TYTON BOTTOM	650 LBS
980 MJ BOTTOM	621 LBS
980 FLANGE BOTTOM	612 LBS
980 TYTON BOTTOM	624 LBS

**985/980 WET BARREL HYDRANT
DIMENSIONS**

CLOW VALVE COMPANY



350 PSI Working Pressure

MJ BOTTOM

FLANGE BOTTOM

TYTON BOTTOM

THIS HYDRANT DOES NOT HAVE A BREAK-OFF FEATURE AND MUST BE PROTECTED AGAINST ANY IMPACT