

**FIRE HYDRANTS
ORDERING INFORMATION
CLOW VALVE COMPANY**

When placing orders or making inquiries, please furnish the following information. This information will enable us to answer your questions, prepare quotations, and fill your order promptly. Lack of essential information is almost sure to cause delays.

Use Figure Number wherever possible to identify the product wanted

1. **Quality and style.**
2. **Construction:** Safety Flange.
3. **Size of main valve openings:** 4¹/₂ or 5¹/₄ inch.
4. **Number and size of pumper nozzles.**
5. **Type of inlet connection:** Flanged, mechanical joint, or Tyton (6")
6. **Size of inlet connection:** 4-, 6-, or 8"
7. **Depth of trench or bury:** Distance from ground line to bottom of connecting pipe.
8. **Direction of opening:** Usually open to left (counterclockwise); open right (clockwise), when specified.
9. **Size and shape of operating nut:** National Standard is 1¹/₂-inch pentagon measured from point to opposite flat at base of nut.
10. **Hose and pumper nozzle threads:** If other than National Standard, thread specification and nut size must be furnished in the following manner:
 - (a) Send sample nozzle or male hose coupling; or
 - (b) Send drawing giving complete thread specification; or
 - (c) Refer us to previous hydrant order. Complete records are kept of all installations.
11. **Color:** Specify color of paint wanted.

Specifications

Clow, Eddy, and Medallion Fire Hydrants meet or exceed the requirements of American Water Works Association Specification AWWA C502, Fire Hydrants for Ordinary Water Service.

Hose and Hydrant Wrenches



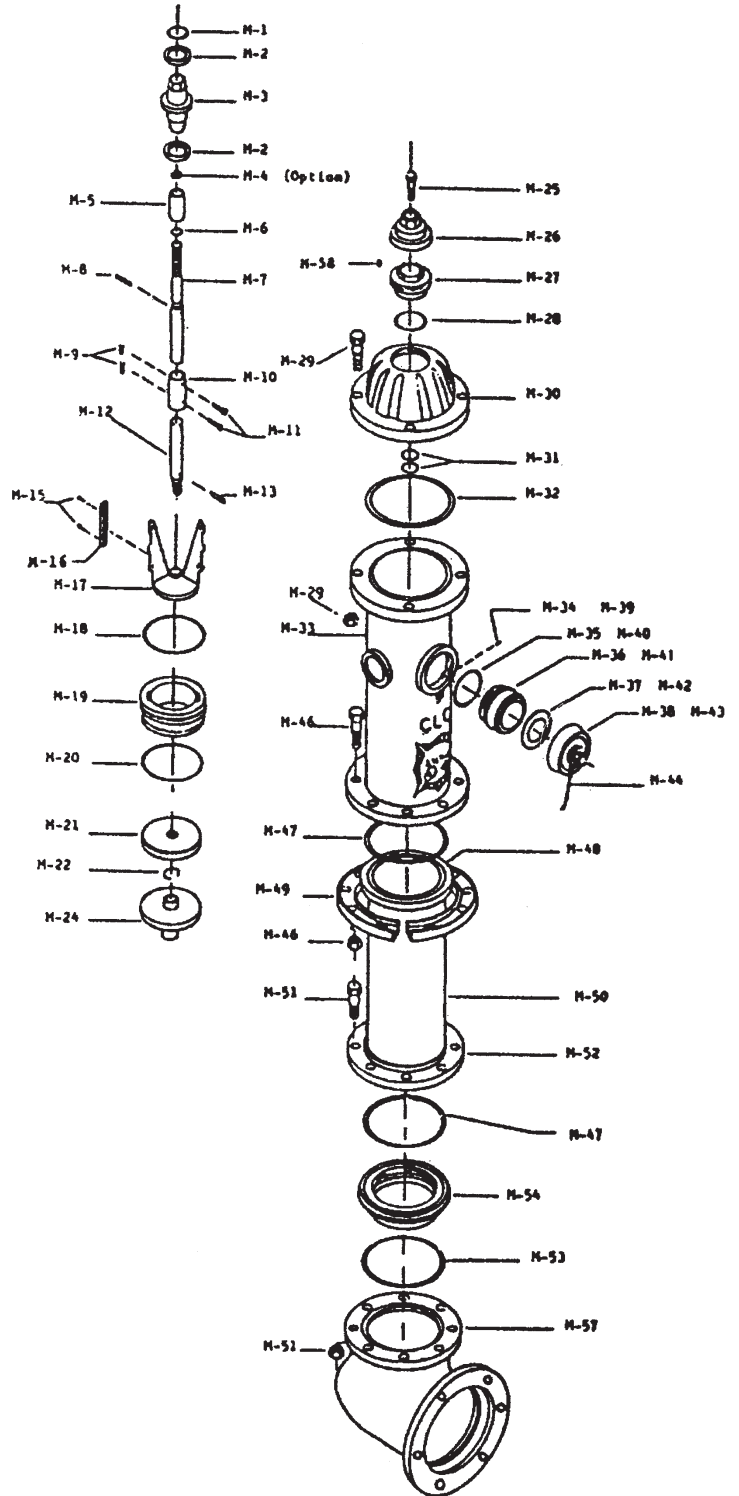
F-2750

**Adjustable Hydrant Wrench with Spanner
Fits both Pin type and Rocker type hose couplings**

MEDALLION HYDRANT ASSEMBLY EXPLOSION

CLOW VALVE COMPANY

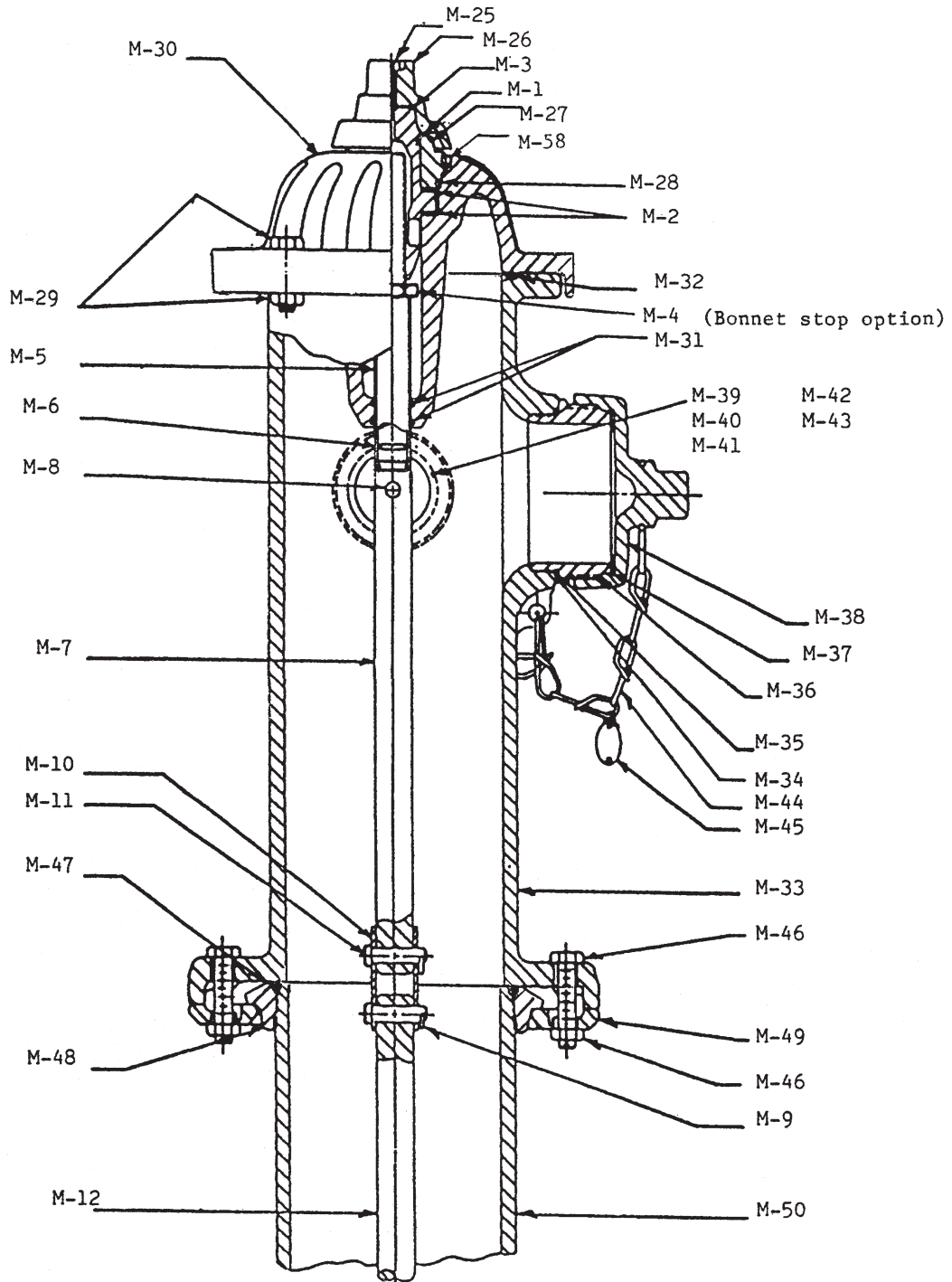
DET	QTY.	DESCRIPTION	MATERIAL
M-1	1	OPERATING NUT O-RING	RUBBER
M-2	2	OPERATING NUT THRUST BEARINGS	DELTRIN
M-3	1	OPERATING NUT	COPPER ALLOY
M-4	1	UPPER STEM JAM NUT (OPTION)	STAINLESS STEEL
M-5	1	UPPER STEM SLEEVE	COPPER ALLOY
M-6	1	UPPER STEM SLEEVE O-RING	RUBBER
M-7	1	UPPER STEM	CRS
M-8	1	UPPER STEM PIN	STAINLESS STEEL
M-9	2	SAFETY COUPLING COTTER PINS	STAINLESS STEEL
M-10	1	SAFETY STEM COUPLING	STAINLESS STEEL
M-11	2	SAFETY COUPLING PINS	STAINLESS STEEL
M-12	1	LOWER STEM	CRS
M-13	1	LOWER STEM PIN	STAINLESS STEEL
M-15	4	DRAIN VALVE FACING SCREW	STAINLESS STEEL
M-16	2	DRAIN VALVE FACING	URETHANE RUBBER
M-17	1	UPPER VALVE PLATE	COPPER ALLOY
M-18	1	SEAT RING UPPER O-RING	RUBBER
M-19	1	SEAT RING	COPPER ALLOY
M-20	1	SEAT RING LOWER O-RING	RUBBER
M-21	1	MAIN VALVE SEAT	RUBBER
M-22	1	LOWER VALVE PLATE LOCKWASHER	STAINLESS STEEL
M-23			
M-24	1	LOWER VALVE PLATE	CAST IRON
M-25	1	WEATHER CAP HOLD DOWN SCREW	ZINC PLATED STEEL
M-26	1	WEATHER CAP	CAST IRON
M-27	1	THRUST NUT	COPPER ALLOY
M-28	1	THRUST NUT O-RING	RUBBER
M-29	4	BONNETS, BOLTS & NUTS	ZINC PLATED STEEL
M-30	1	BONNET	CAST IRON
M-31	2	STEM O-RINGS	RUBBER
M-32	1	BONNET O-RING	RUBBER
M-33	1	NOZZLE SECTION	CAST IRON
M-34	1	PUMPER NOZZLE LOCK	STAINLESS STEEL
M-35	1	PUMPER NOZZLE O-RING	RUBBER
M-36	1	PUMPER NOZZLE	
M-37	1	PUMPER NOZZLE GASKET	RUBBER
M-38	1	PUMPER NOZZLE CAP	CAST IRON
M-39	2	HOSE NOZZLE LOCK	STAINLESS STEEL
M-40	2	HOZE NOZZLE O-RING	RUBBER
M-41	2	HOSE NOZZLE	COPPER ALLOY
M-42	2	HOSE NOZZLE GASKET	RUBBER
M-43	2	HOZE NOZZLE CAP	CAST IRON
M-44	1	CHAIN	ZINC PLATED STEEL
M-46	8	SAFETY FLANGE BOLTS & NUTS	ZINC PLATED STEEL
M-47	2	SAFETY FLANGE O-RINGS	RUBBER
M-48	1	BARREL UPPER FLANGE	DUCTILE IRON
M-49	2	SAFETY FLANGE	CAST IRON
M-50	1	BARREL	DUCTILE IRON PIPE
M-51	8	SHOE BOLTS & NUTS	STAINLESS STEEL
M-52	1	BARREL LOWER FLANGE	DUCTILE IRON
M-53	1	DRAIN RING O-RING	RUBBER
M-54	1	DRAIN RING	COPPER ALLOY
M-55			
M-57	1	SHOE	DUCTILE IRON
M-58	1	THRUST NUT SETSCREW	STAINLESS STEEL



MEDALLION HYDRANT
ASSEMBLY

CLOW VALVE COMPANY

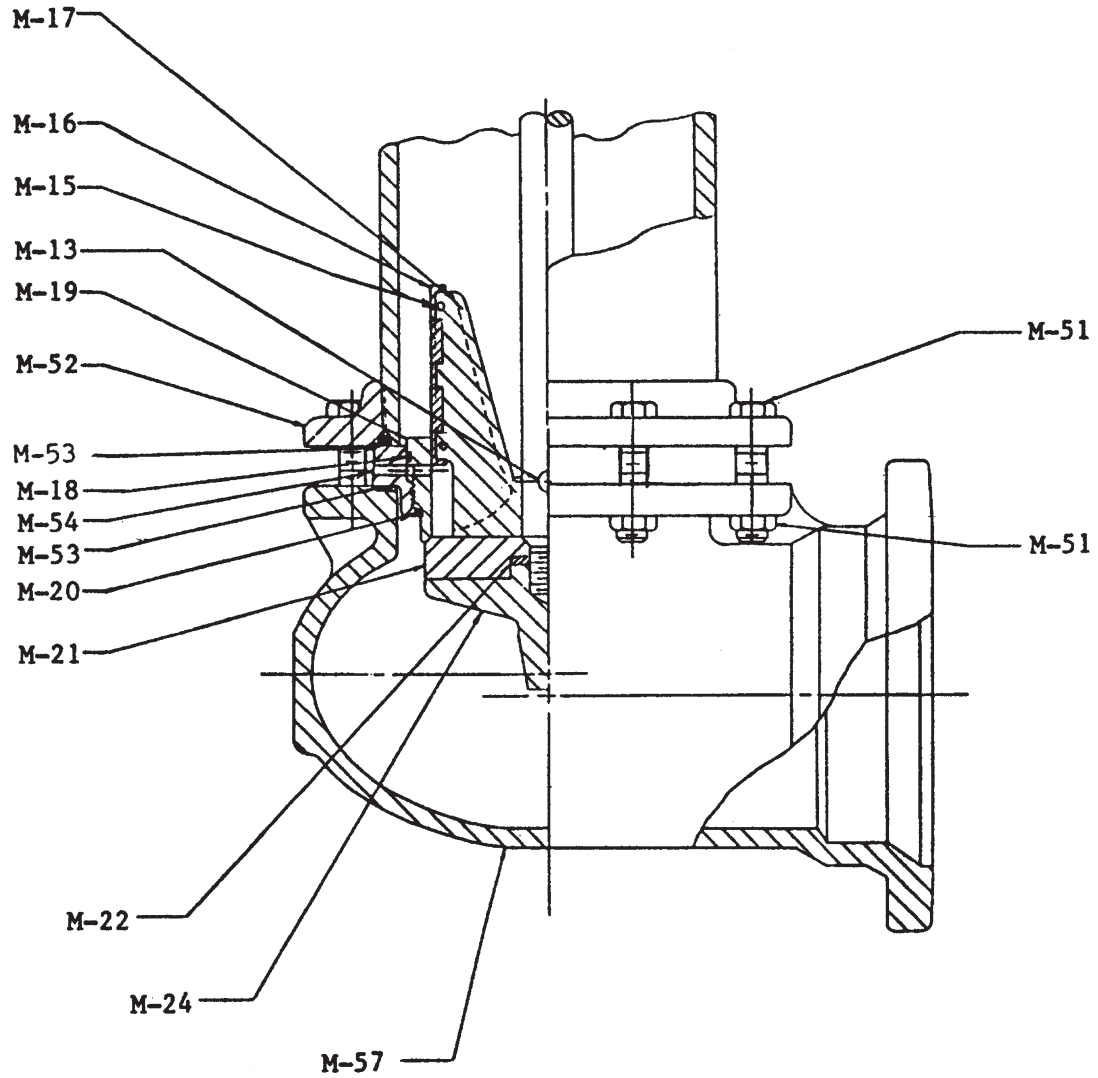
F-2545



MEDALLION HYDRANT
ASSEMBLY

CLOW VALVE COMPANY

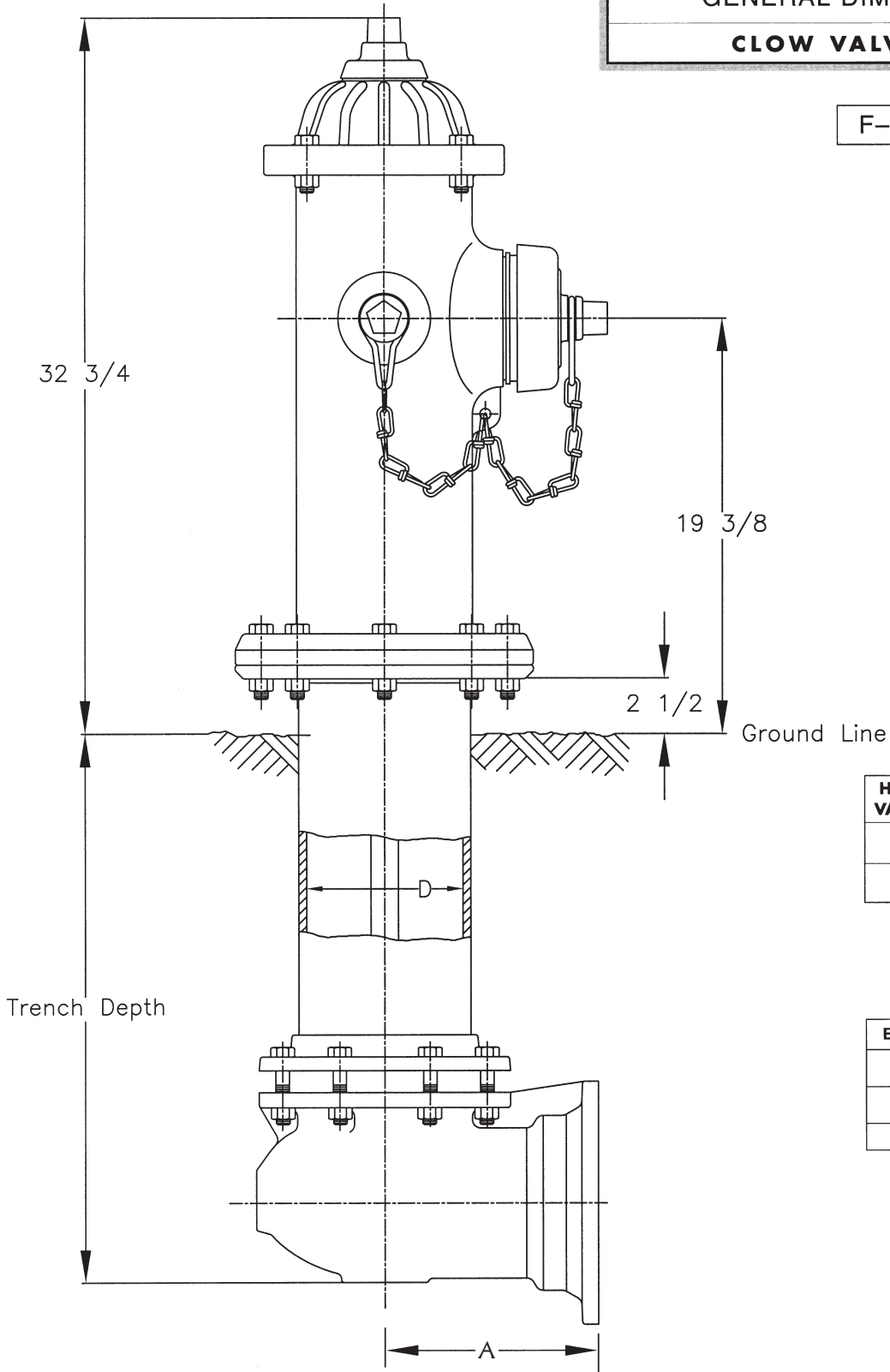
F-2545



MEDALLION HYDRANT
GENERAL DIMENSION LAYOUT

CLOW VALVE COMPANY

F-2545



HYDRANT VALVE SIZE	D
4 1/2"	6.16 ± .14
5 1/4"	7.04 ± .14

END TYPE	A
Flange	8 1/8"
SMJ	9"
Tyton	9 5/8"

385-09
B 6/5/07

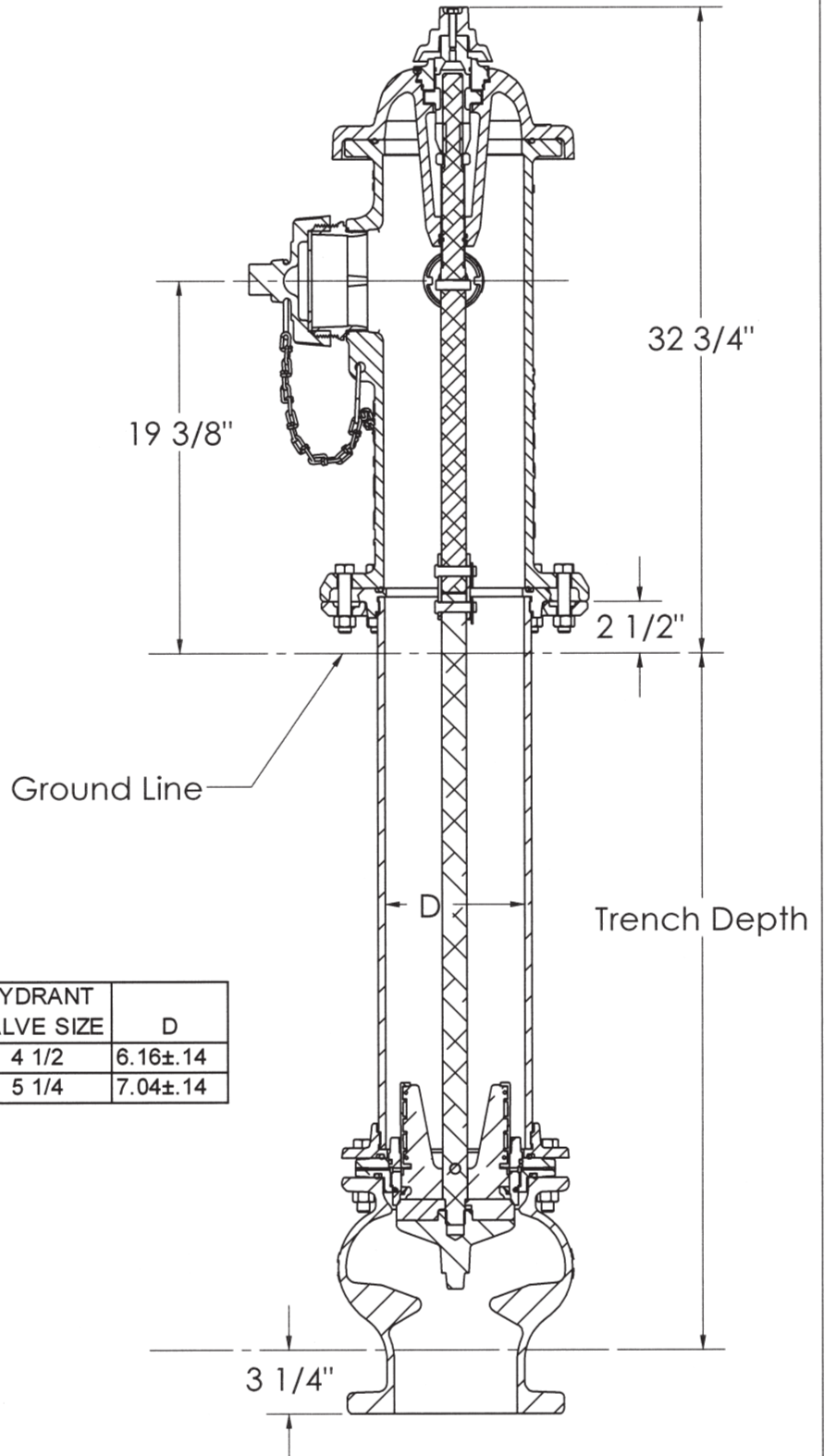
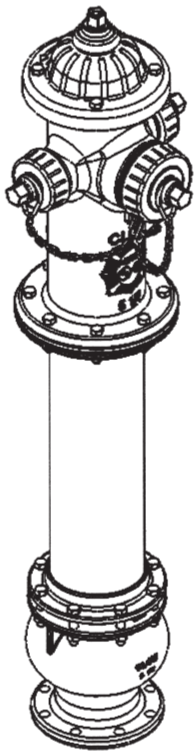
MEDALLION HYDRANT Vertical Bottom General Dimension Layout

CLOW VALVE COMPANY

Hydrant complies with AWWA C502 & C550 standards.

Hydrant complies with UL 246 and FM standard.

Hydrant has a rated working pressure of 250 psig.

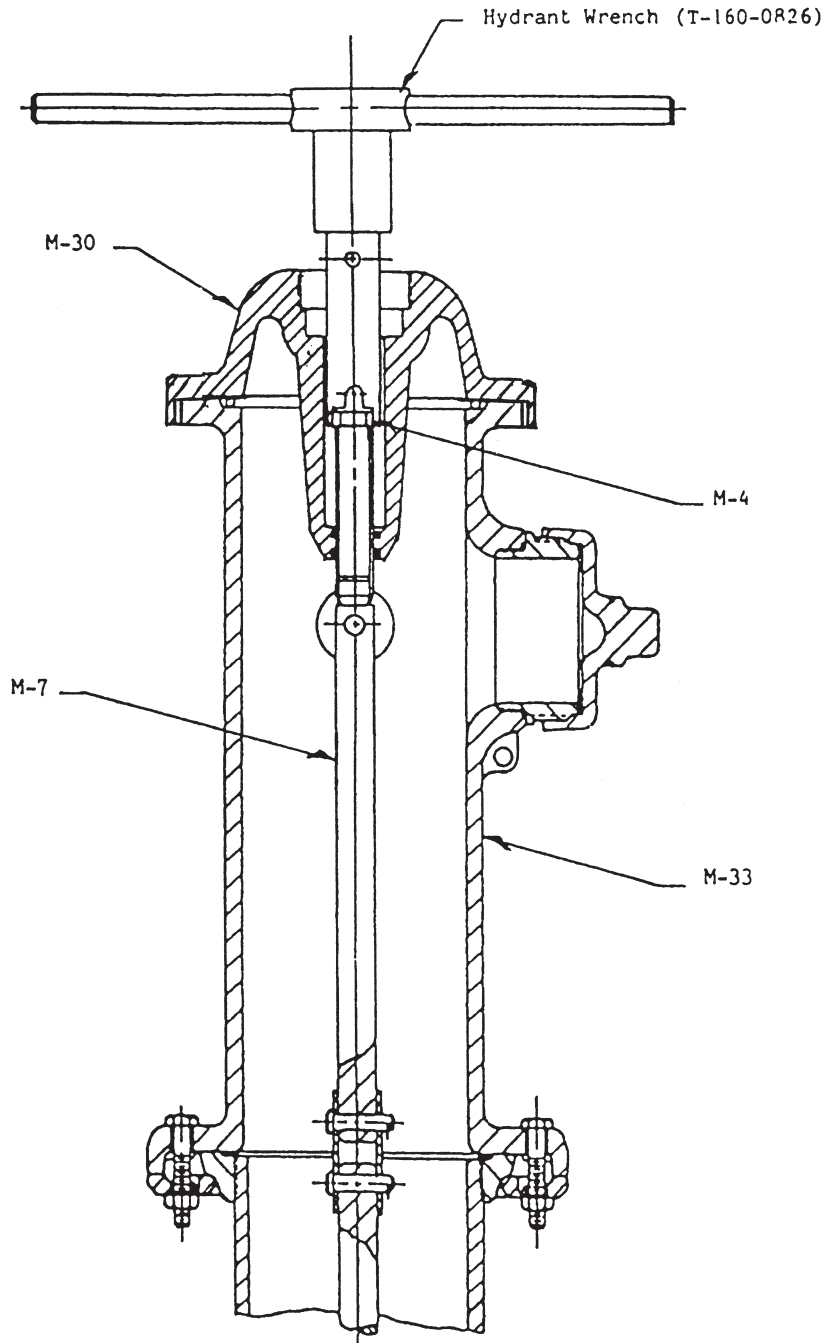


HYDRANT VALVE SIZE	D
4 1/2	6.16±.14
5 1/4	7.04±.14

MEDALLION HYDRANT
MAIN VALVE SEAT REMOVAL
HYDRANT WRENCH-BONNET STOP OPTION

CLOW VALVE COMPANY

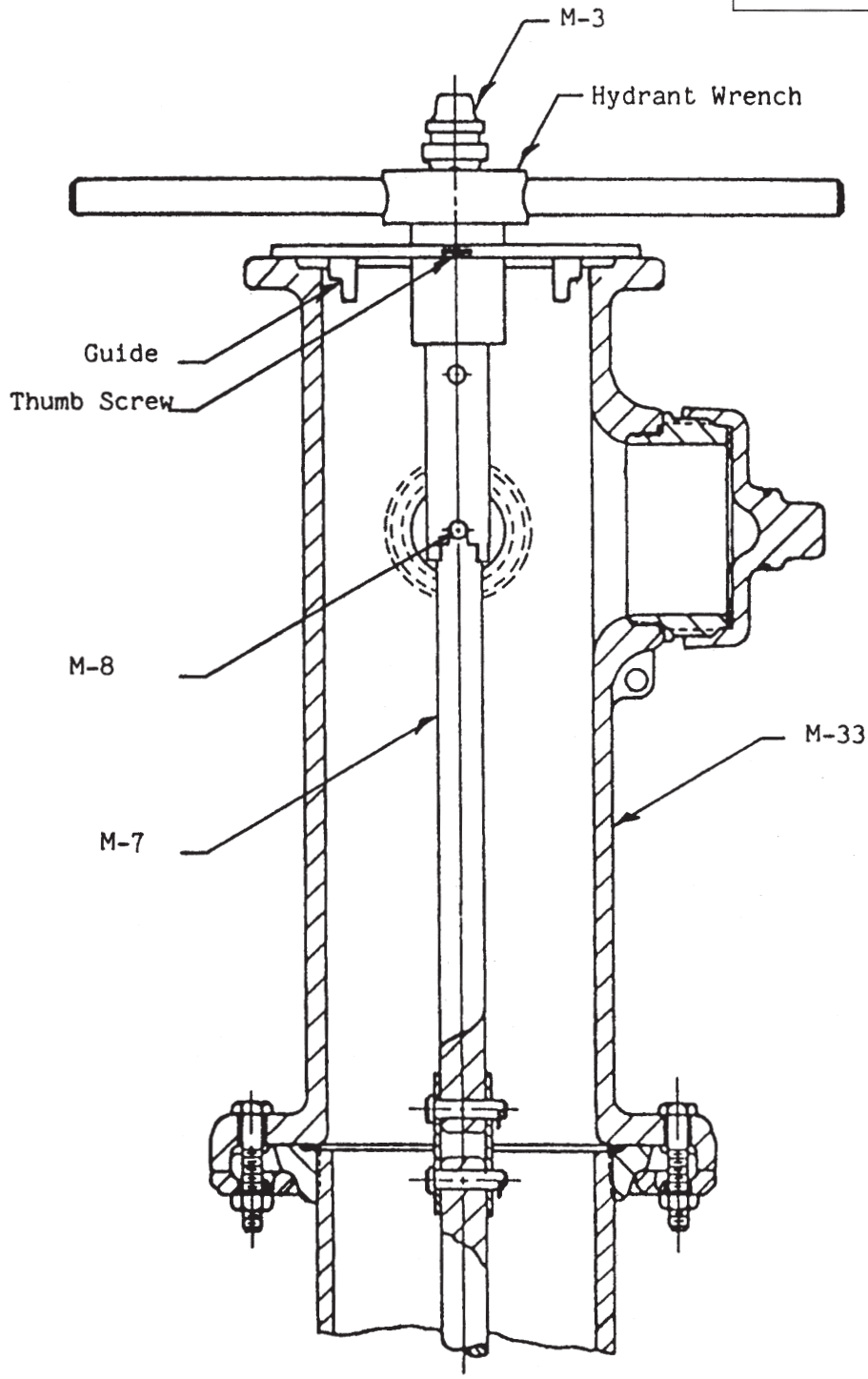
F-2545



MEDALLION HYDRANT
MAIN VALVE SEAT REMOVAL
HYDRANT WRENCH

CLOW VALVE COMPANY

F-2545



MEDALLION HYDRANT
AWWA UL/FM
SAMPLE SPECIFICATIONS

CLOW VALVE COMPANY

1. Fire Hydrant shall be manufactured in accordance with AWWA Standard C502, be listed by Underwriters Laboratories, Inc. and have Factory Mutual Research approval.
2. Fire Hydrant shall be designed for 250 psi working pressure and tested to 500 psi Hydrostatic pressure.
3. Fire Hydrant shall be backed by manufacturers 10-year limited warranty.
4. Fire Hydrant shall be dry-top center stem construction having an O-Ring sealed lubrication reservoir.
5. Fire Hydrant shall be manufactured with operating nut and thrust nut made of copper alloy with bearings located both above and below the thrust collar and with operating nut protected by a cast-iron weather shield.
6. Fire Hydrant shall be manufactured with nozzles mechanically locked into the barrel coupling. Nozzle section must rotate 360 degrees.
7. Fire Hydrant shall be a "Traffic Model", complete with safety flanges and steel stem coupling. Nozzle section must rotate 360 degrees.
8. Fire Hydrant shall be manufactured with a main valve seat ring of copper alloy threaded into a copper alloy drain ring. A 360 degree drain channel shall have a minimum of two drain outlets.
9. Fire Hydrant shall have a copper alloy upper valve plate and two urethane rubber facings that activate the drain ports.
10. Fire Hydrant shall be manufactured with a lower valve plate that bottoms out in the shoe for maximum opening.
11. Fire Hydrant shall be manufactured with a minimum main valve opening of 4½ or 5¼ inches.
12. Fire Hydrant shall be the CLOW MEDALLION as manufactured by the Clow Valve Company or approved equal.