

**CLOW HORIZONTAL SWING
CHECK VALVES**

CLOW VALVE COMPANY

**CLOW AWWA Horizontal Swing Check Valves
Meet or Exceed the Requirements
of AWWA Standard C508**

Size Range	Water working Pressure psi	Hydrostatic Test psi
2"-12"	200	400
14"-30"	150	300

Available End Connections & Size Range

Figure No.

Flanged	2"-24" (Plain)	Style 1106
Flanged	14"-30" (Plain)	Style 59-02
Flanged	2"-12" Outside Weight & Lever	Style 1106LW
Flanged	14"-30" Outside Weight & Lever	Style 159-02
Flanged	2"-12" Outside Spring & Lever	Style 1106SL
Flanged	14"-30" Outside Spring & Lever	Style 259-02
Flanged	4"-12" Cushion Check	Style 1206
Flanged	14"-30" Cushion Check	Style 206

Resilient Hinge Check Valve

Flanged	4"-12" Resilient Hinged Check	Style 506
	250 psi Working Pressure	
	500 psi Hydrostatic Test	

Accessories

Outside Weight & Lever	Limit Switchest
Outside Spring & Lever	Rubber Faced Gates
Tapped Bosses (Drain-Bypass)	

HORIZONTAL SWING CHECK VALVES
4"-30" FLANGED ENDS, CUSHION CHECK

CLOW VALVE COMPANY

STYLE 1206

If possible, it is preferable to eliminate water hammer. The best way to eliminate water hammer is in the design of the piping system. For most cases where water hammer exists it is preferable to reduce its effects by causing the check valve to close so quickly that the flow is not able to reverse. CLOW Valve has available lever and weight and lever and spring arrangements on the Figure 106 and 159 Check Valve.

In some cases the customer may want an arrangement that retards the closing of the check valve. The customer may want such an arrangement for those cases where the water column actually has an opportunity to reverse or even separate, such as might occur when the check valve is not at the lowest elevation in the system.

For those customers, CLOW Valve makes available the Figure 206 Cushion Check Valve. The Figure 206 Cushion Check Valve is a Figure 106(4"-12") and Figure 159 (14"-30"), AWWA valve with a lever and weight and a pneumatic cylinder arrangement. The pneumatic cylinder has a needle valve that allows the customer to adjust the time required for the valve to close.

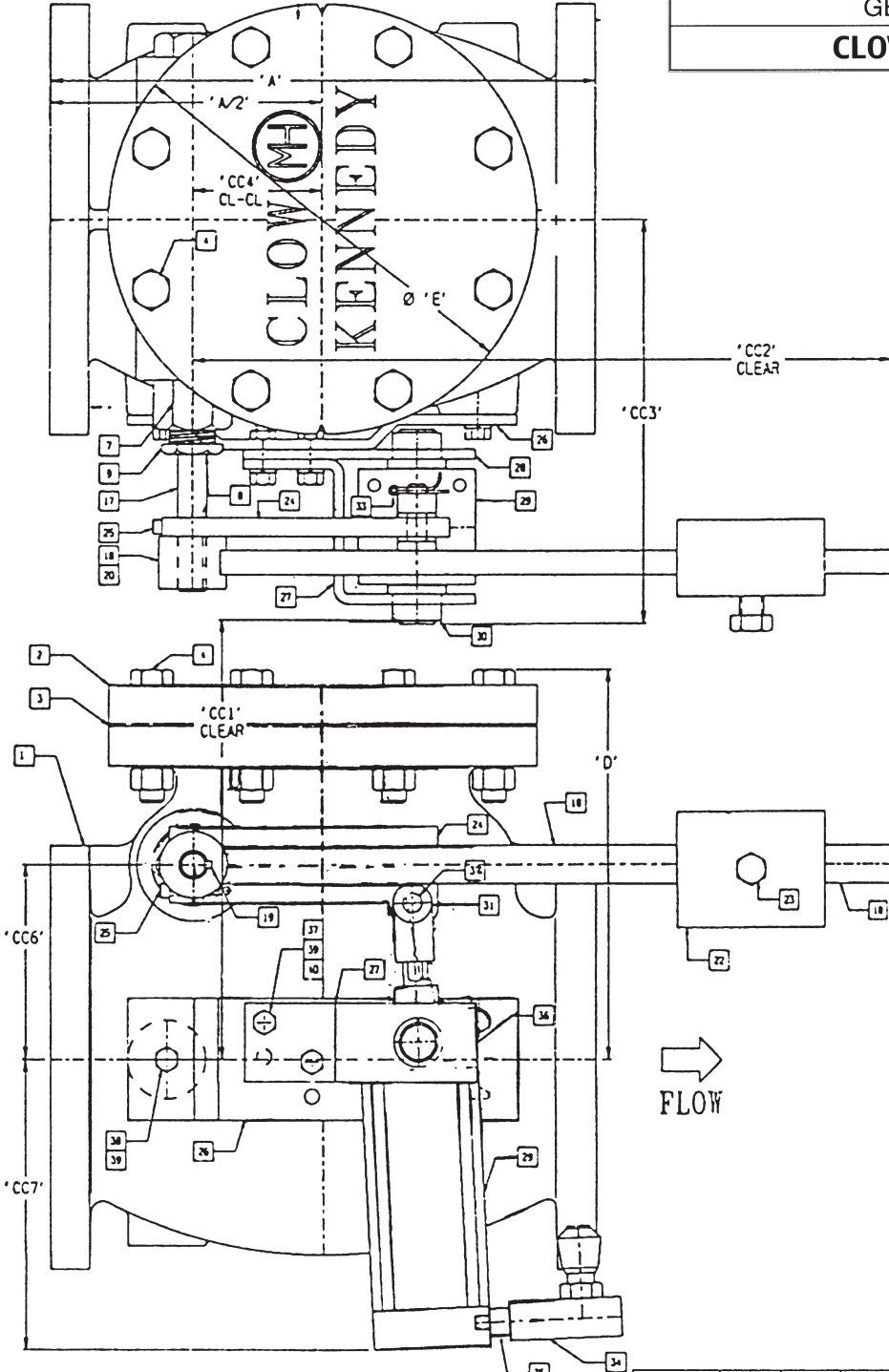
The Figure 206 Check Valve may be ordered from the factory either as flow horizontal or flow up. The cylinder arrangement is available mounted on either side; unless specified the Figure 206 valve will be supplied with the cylinder on the right side (when facing the inlet) and for horizontal flow.

The Figure 206 has internal components identical to the Figure 106 and 159.

HORIZONTAL SWING CHECK VALVES
 4"-12", FLANGED ENDS, CUSHION CHECK
 GENERAL DIMENSION

CLOW VALVE COMPANY

Style 1206



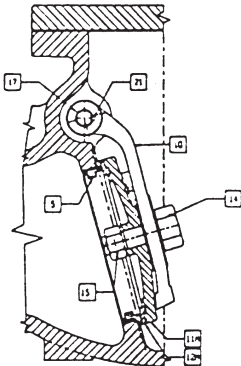
SIZE	A	D	E	CC1	CC2	CC3	CC4	CC5	CC6	CC7
4	11.50	8.31	9.00	13.77	12.00	9.56	2.44	-	3.75	8.89
6	14.00	10.06	11.00	19.28	18.00	10.38	3.31	-	5.00	7.52
8	19.50	12.38	13.50	22.24	18.00	11.75	4.88	-	6.25	6.40
10	24.50	13.93	16.75	23.62	18.00	13.68	6.19	-	7.12	11.46
12	27.50	16.18	19.00	24.57	18.00	14.94	8.38	-	8.19	10.40

Dimensions Approximate-for Checking Clearances Only.
 Allow Clearance Two Sides to Remove Side Plug & Access Hinge Pin

**HORIZONTAL SWING CHECK VALVES
4"-12", FLANGED ENDS, CUSHION CHECK
PARTS LIST**

CLOW VALVE COMPANY

Style 1206



**TYP SECTION
4-12"**

NOTES;

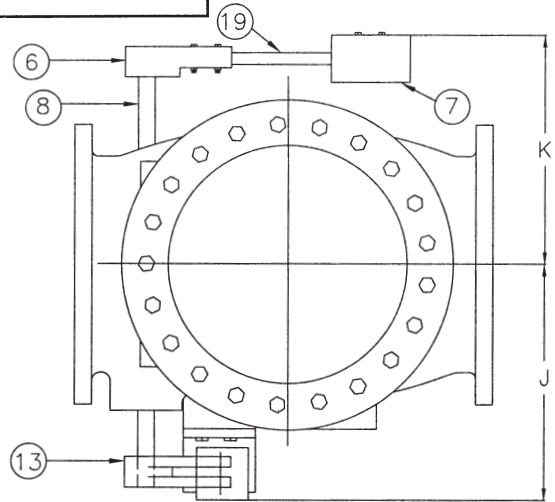
1. 6" VALVE SHOWN
2. VALVE SHOWN WITH CUSHION ARRANGEMENT ON RIGHT HAND SIDE (FACING INLET) LEFT HAND VERSION AVAILABLE
3. VALVE OPENING IS SUDDEN INSTALL GUARDS OR OTHERWISE ASSURE THAT PERSONS ARE WELL CLEAR
4. DIMENSIONS ARE APPROXIMATE and FOR LAYOUT PURPOSES ONLY
5. CONFIGURATION FOR VERTICAL INSTALLATION DIFFERENT THAN SHOWN-See Drawing

ITEM NO.	DESCRIPTION			
1	Body	Gray Iron	A126B	Special Boss Drill & Tap
2	Cap	Gray Iron	A126 B	
3	Cap Gasket	Rubber Reinforced	by GARLOCK	
4	Cap Bolts & Nuts	Steel, Plated	A307	
5	Seat Ring	Bronze	CDA 844	
6				
7	Stuffing Box	Bronze	B16	
8	Packing (not shown)	Non-Asbestos	by GARLOCK	
9	Gland Follower	Bronze	B16	
10	Hinge (Keyed)	Ductile Iron		
11M	Disc - Metal	Iron		
11R	Disc Holder	Iron		
12M	Disc Facing Ring	Bronze	CDA 844	Intergral with Disc
12R	Disc Resilient	Rubber		
13R	Disc Plate	Bronze	CDA 844	
14	Disc Bolt	-		Sizes 2-8" Steel 10&12" BRONZE
15	Nut, Disc Bolt	-		Sizes 2-8" Steel 10&12" BRONZE
16	Disc Bolt Gasket	Fibre		10&12" Sizes Use O-Ring
17	Hinge Pin (Special)	Stainless	431	Heat Treated
18	Lever (Special)	Steel		
19	Key for Lever	Stainless		
20	Set Screw for Lever	Steel		
21	Key for Hinge	Stainless		
22	Weight	Gray Iron	A126 B	
23	Set Screw for Weight	Steel, Plated	A307	
24	Cylinder Arm	Steel		
25	Set Screw for Arm	Steel		
26	Body Bracket	Steel		
27	Outer Cylinder Bracket	Steel		
28	Inner Cylinder Bracket	Steel		4 & 6" Sizes
29	Cylinder	Per Catalogue		
30	Bushing(s)	Bronze		
31	Rod End	Steel		
32	Pin	Steel		
33	Cotter Pin	Stainless		
34	Control Valve	Per Catalogue		
35	Nipple	Brass		
36	Muffler	Per Catalogue		
37	Body Bracket Bolts	Steel, Plated	Grade 5	
38	Cylinder Bracket Bolts	Steel, Plated	Grade 5	
39	Lock Washer (HiCollar)	Steel, Plated		
40	Nuts (Jam)	Steel, Plated		

HORIZONTAL SWING CHECK VALVE
14"-30" FLANGED ENDS-CUSHION CHECK

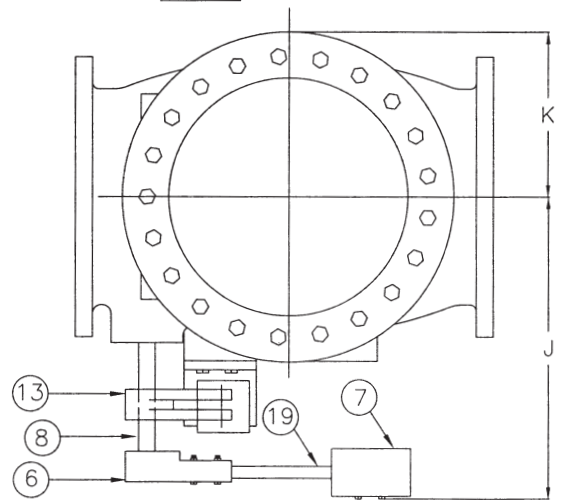
CLOW VALVE COMPANY

STYLE 206



VALVE SIZE	14	16	18	20	24	30
J	19.25	19.75	21.5	25	28	30
K	20.25	22.5	23.5	25.5	28.75	31.5

OPTION 1



VALVE SIZE	14	16	18	20	24	30
J	25.75	26.25	28.5	31.75	35.5	37.5
K	11.75	14	13.75	16	19.375	21.875

OPTION 2

DIMENSIONS IN INCHES

VALVE SIZE	14	16	18	20	24	30
A	30.00	35.00	36.50	37.625	44.00	49.50
B	1.375	1.438	1.563	1.688	1.875	2.125
C	21.00	23.50	25.00	27.50	32.00	38.75
D	18.75	21.250	22.750	25.00	29.50	36.00
E	12	16	16	20	20	28
F	1.00	1.00	1.125	1.125	1.250	1.250
G	23.50	27.75	27.50	32.00	38.75	43.75
H	18.75	23.00	25.00	24.50	28.00	32.875
L	31	33	39	39.5	47.5	50.5
M	17	15	14.5	17.5	12	9.5
N	12	12.25	12.5	14	16.5	19.75

HORIZONTAL SWING CHECK VALVE
14"-30" FLANGED ENDS-CUSHION CHECK

CLOW VALVE COMPANY

STYLE 206

ITEM No	DESCRIPTION		
1	BODY	GRAY IRON	A-126 B
2	COVER	GRAY IRON	A-126 B
3	COVER GASKET	NON-ASBESTOS	-----
4	COVER BOLTS & NUTS	STEEL	A-307 B
5	GLAND(BRONZE BUSHED)	CAST IRON	A-126 B
6	WEIGHT ARM	DUCTILE IRON(65-45-12 or 70-50-05)	
7	WEIGHT	CAST IRON	A-126 B
8	HINGE PIN	STN.STL. (ANNEALED)	630 SS
9	CUSHION BRACKET CAPSCREW	STEEL	A-307 GR.B
10	AIR CUSHION	PER CATALOGUE	
11	AIR CUSHION BASE PLATE	H.R. STEEL	A-36
12	AIR CUSHION BASE PLATE BOLTS AND NUTS	H.R. STEEL	A-36
13	AIR CUSHION ARM	DUCTILE IRON(65-45-12 or 70-50-05)	
14	FEMALE ROD CLEVIS	PER CATALOGUE	
15	CLEVIS PIN	PER CATALOGUE	
16	CONTROL VALVE	PER CATALOGUE	
17	CLEVIS BRACKET	PER CATALOGUE	
18	MOUNTING PLATE	PER CATALOGUE	
19	WEIGHT BAR	H.R. STEEL	A-36
20	BREATHER VENTS	PER CATALOGUE	

